

Overall student visa trends June 2017



ThinkNew[®] | NEW ZEALAND
EDUCATION

Acronyms

Acronyms

FSV – First-time student visas – The number of visas issued to students for the first time. Visas for dependants and Section 61 applicants are excluded since these people do not fall under the definition of international students.

RSV – Returning student visas – The number of visas issued to students subsequent to the first issuing of visas. Visas for dependants and Section 61 applicants do not fall under the definition of international students.

TSV – Total student visas – The number of visas issued to students, either for the first time, or after the first time. Declined visas are not included. Visas for dependants and Section 61 applicants are excluded since these people do not fall under the definition of international students.

VSV – Valid student visas – The number of people holding a student visa and/or permit at the beginning of each calendar month. Visas for dependants are excluded. The presented figures can be interpreted as the number per month of international students with authority to study in a course of three or greater months in duration. This does not mean that these students are present in New Zealand for the entire duration of their visa.

YTD – Year-to-date

Sectors

ITP – Institutes of Technology and Polytechnics

PTE – Private Training Establishments, including Private Training Establishments, which receive government funding.

Schools – Includes all students in primary, intermediate and secondary schools.

Additional notes

- Results for YTD this year will be compared to the YTD 2016 unless otherwise stated.

Caveats and notes

International student

International student – Students who are non-residents of New Zealand and Australia who:

- have entered into New Zealand expressly with the intention to study
- have enrolled with a New Zealand provider offshore, where the educational programme is delivered in-market.

Rule 18 – Rule governing English Language requirements for certain international students. More information about this is available on

<http://www.nzqa.govt.nz/about-us/our-role/legislation/nzqa-rules/nzqf-related-rules/programme-approval-and-accreditation/8/18/>

Section 61 – Visas issued to people who are currently in New Zealand outside of Immigration NZ policy.

Scope of this document

- This dashboard excludes dependants, applicants under Section 61, and applications for variation of conditions.
- There is a potential delay between students having their visas approved and their actual entry into New Zealand, therefore, the figures shown here may not necessarily represent the actual number of students currently in New Zealand.
- VSV are the best real-time indicator of international students present in New Zealand. A VSV indicates that students are able to be present in New Zealand. VSV do not include students who are in New Zealand on working holiday visas or visitor visas, and not all students with VSV are present in New Zealand for the entire duration of their visas.

The student visa dashboard does not include all international students:

- Student visas only capture students who enter New Zealand with a student visa. These students are mostly those who are planning to study for more than three months.
- Students who undertake a course less than three months in duration are not required to enter on a student visa. Students who do choose to enter on a visitor visa (usually from visa-free nationalities) are not captured in this dashboard.
- Working holiday visas allow students to study for up to six months. Those who enter NZ on a working holiday visa and plan on taking up this option are not included in this dashboard. These factors will affect private training establishment (PTE) numbers.

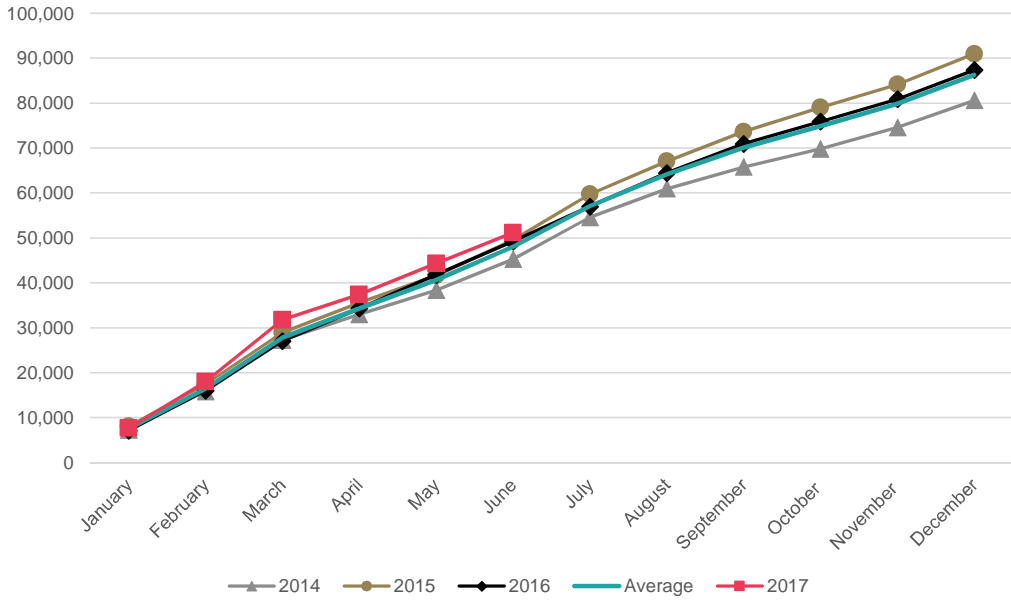
Executive summary

1. TSV numbers for 1 July 2017 are up 4% (+1,913) compared to 1 July 2016. Most key markets continue to show TSV growth apart from India, Japan, Korea and Saudi Arabia which have decreased.
2. FSV numbers for 1 July 2017 are also up 4% (+757) compared to 1 July 2016.
3. Key markets with FSV increases YTD were China (+4%, +181), USA (+20%, +283), Viet Nam (+40%, +153), Brazil (+21%, +176), Chile (54%, +143) and Colombia (+41%, +154).
4. The Universities sector FSV grew by 15% (879) compared to YTD 2016. Regions with universities are generally experiencing growth, and should continue to.
5. VSV numbers for 1 July 2017 are up 2% (+1,455) on 1 July 2016, strengthening the suggestion that enrolments will be slightly up, or on par, with 2016^[1].
6. The decline of VSV in the PTE sector (-16%, -4,313) is reflective of the Indian market realignment as students transition to higher level qualifications.
7. The number of university students with valid visas continues to exceed the number of PTE students with valid visas.

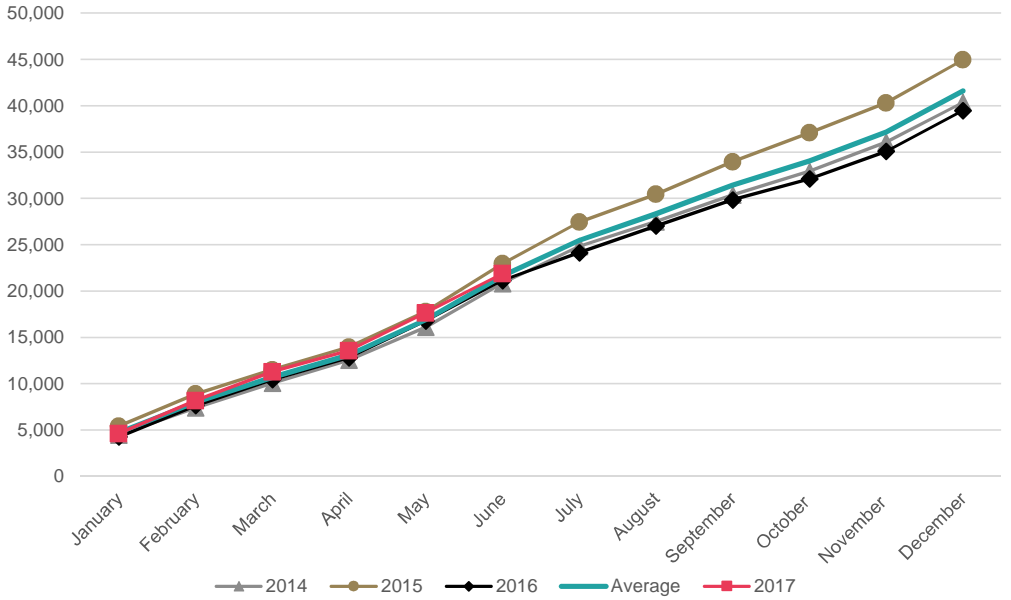
^[1] VSV are measured at the first of the month. In this case 01 July 2017.

Comparison to previous years (cumulative)

TSV approved - cumulative



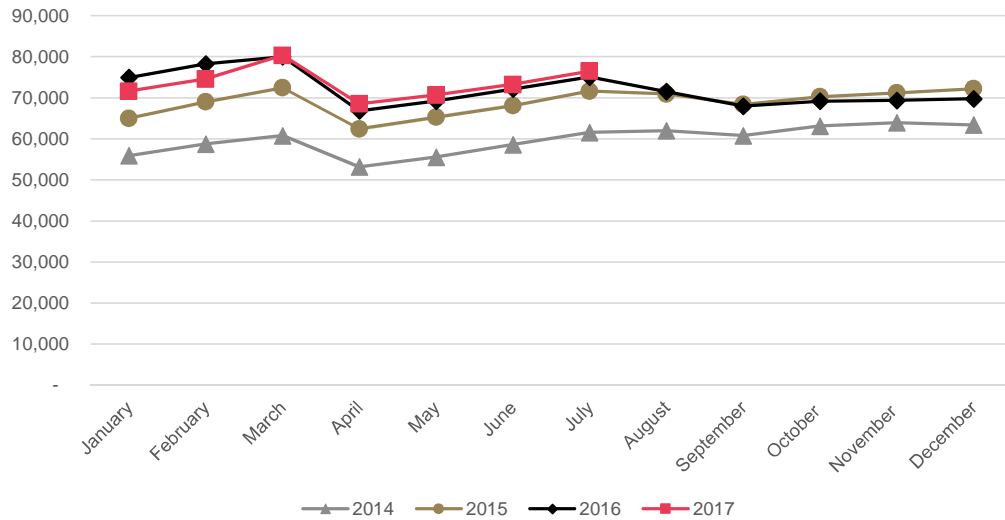
FSV approved - cumulative



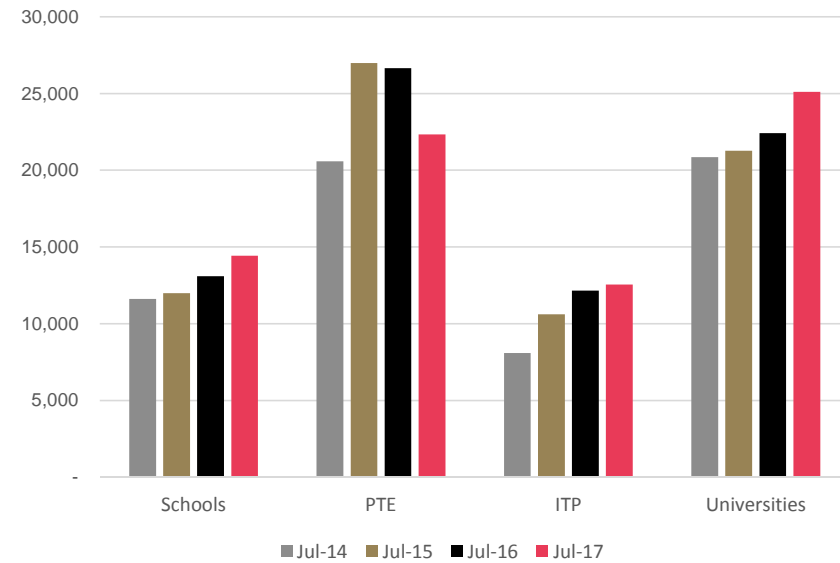
- TSV are up 4% for the YTD 2017 compared to the YTD 2016.
- FSV are up 4% compared to YTD 2016.

Valid student visas

VSV by year



VSV by sector



- VSV were 76,540 as at 1 July 2017, which was a 2% increase (+1,438) compared to 1 July 2016.
- Compared to last July, Universities (+11%, +2,706), Schools (+9%, +1,331), and ITP (+3%, +380) have all increased in VSV since the same day in 2016, while VSV for PTE (-19%, -4,313) have continued to decline.
- The number of Universities students with valid visas continues to exceed the number of PTE students with valid visas.

Note: VSV are the number of valid student visas for New Zealand on the first day of the month. It is used as an indicator of student numbers. VSV doesn't differentiate between FSV or RSV. Students on a work or visitor visa are not captured by this dataset so total student numbers will be higher than this data set shows.

Trends by market



Global region definitions

In order of appearance:

South East Asia includes: Brunei Darussalam, Cambodia, Indonesia, Laos, Malaysia, Myanmar, Philippines, Singapore, Thailand, and Viet Nam.

Latin America includes: Argentina, Bolivia, Brazil, Chile, Colombia, Ecuador, El Salvador, Guatemala, Mexico, Nicaragua, Panama, Paraguay, Peru, Suriname, Trinidad and Tobago, Turks and Caicos Islands, Uruguay, Venezuela, Cuba, Honduras, St Lucia, Costa Rica, Dominican Republic, Belize, Dominica, St Vincent and the Grenadines, Guyana, and Honduras.

Europe includes: Austria, Belarus, Belgium, Bulgaria, Croatia, Czech Republic, Denmark, Estonia, Finland, France, Georgia, Germany, UK, Greece, Hungary, Iceland, Ireland, Italy, Latvia, Liechtenstein, Lithuania, Luxembourg, Macedonia, Netherlands, Norway, Poland, Portugal, Romania, Russia, Serbia, Serbia & Montenegro, Slovakia, Spain, Sweden, Switzerland, Turkey, Ukraine, Yugoslavia, Kosovo, Armenia, Bosnia and Herzegovina, Albania, Andorra, Cyprus, Slovenia, and Monaco.

Middle East includes: Bahrain, Iran, Iraq, Israel, Jordan, Kuwait, Lebanon, Libya, Oman, Palestine, Qatar, Saudi Arabia, Syria, United Arab Emirates, and Yemen.

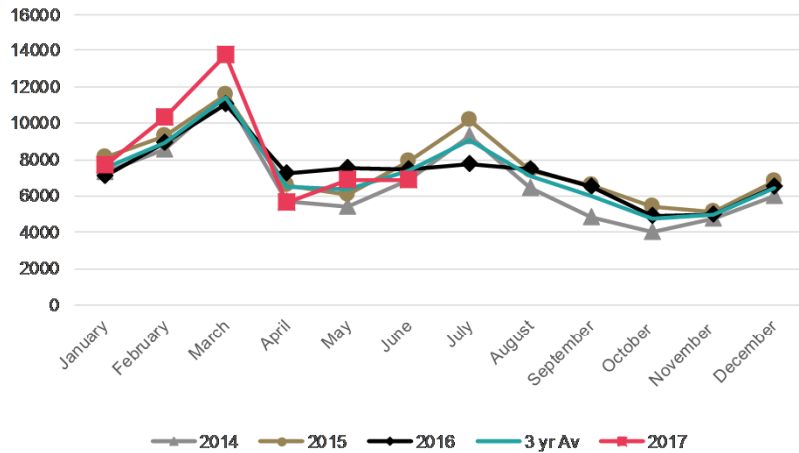
All markets

June 2017

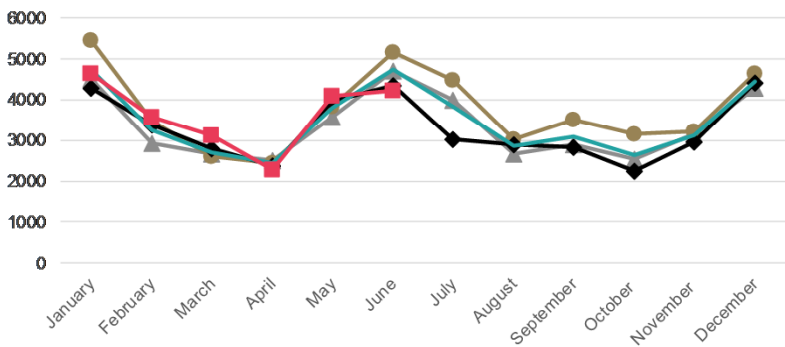


- TSV have increased by 4% (+1,913) from the YTD 2016 to the YTD 2017.
- Most key markets showed TSV increases, apart from India, Japan, Korea and Saudi Arabia which have continued to decrease.
- All sectors showed increases in both TSV and FSV, apart from the PTE sector, which had a decrease in FSV, TSV and RSV.
- All regions showed increases in TSV, apart from Bay of Plenty, Hawke's Bay, Nelson and Taranaki, which were flat or declining.

All markets: TSV approved in 2014-2017



All markets: FSVs approved in 2014-2017



In brief

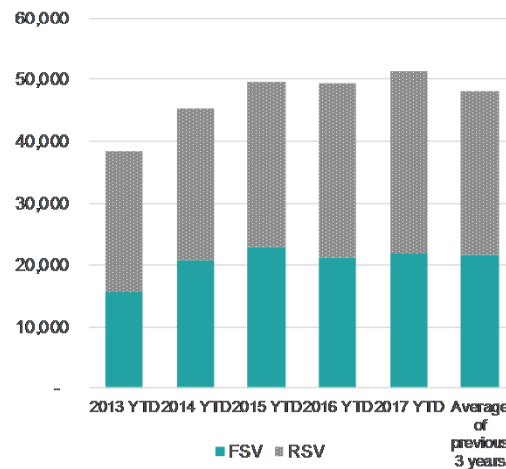
	FSV	RSV	TSV
YTD			
Visas	21,908	29,283	51,191
Change No.	757	1,156	1,913
Change Percent	4%	4%	4%

Changes are from the YTD 2016 to the YTD 2017

All markets: TSV by sector (*)

	2014 YTD	2015 YTD	2016 YTD	2017 YTD	Change Number	Change Percentage
Schools	7,807	8,131	8,435	9,364	929	11%
ITP	5,875	7,416	7,706	8,095	389	5%
PTE	15,898	17,627	16,567	15,745	-822	-5%
Universities	15,491	16,109	16,385	17,838	1453	9%
Total	45,071	49,283	49,093	51,042	1949	4%

All markets: Cumulative FSV and RSV



All markets: 2016 total visas

FSV	39,496
RSV	47,913
TSV	87,409

All markets: FSV by sector (*)

	2014 YTD	2015 YTD	2016 YTD	2017 YTD	Change Number	Change Percentage
Schools	3,767	3,720	3,819	4,059	240	6%
ITP	2,526	3,774	3,552	3,724	172	5%
PTE	9,103	9,463	7,832	7,343	-489	-6%
Universities	5,274	5,751	5,774	6,653	879	15%
Total	20,670	22,708	20,977	21,779	802	4%

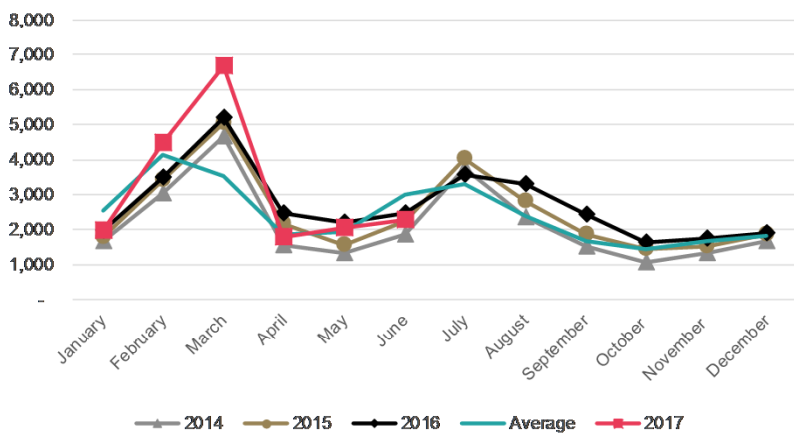
(*) Please note that numbers by sector may not always add up to the same as the total because sector is not always stated.

All markets: TSV by region

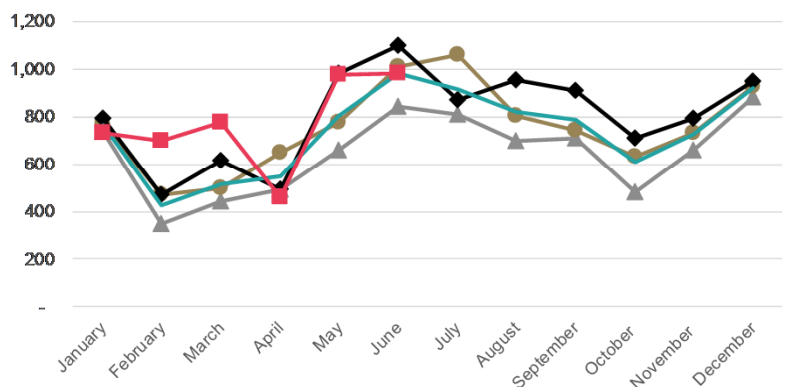
Region	2014 YTD	2015 YTD	2016 YTD	2017 YTD	Change Number	Change Percentage
Auckland	27,387	30,549	29,858	30,866	1008	3%
Canterbury	4,166	4,497	4,647	4,925	278	6%
Wellington	3,131	3,321	3,556	3,829	273	8%
Waikato	2,572	2,631	2,639	2,856	217	8%
Otago	2,545	2,578	2,543	2,688	145	6%
Other	5,491	5,992	6,035	6,027	-8	0%
Total	45,292	49,568	49,278	51,191	1913	4%

- TSV have increased by 8% (+1,486) from the YTD 2016 to the YTD 2017.
- FSV increased for all sectors, especially the ITP (+8%, +53) and PTE (+6%, 85) sectors.
- VSV for China increased by 13% (+3,086) as of 1 July 2017 compared to 1 July 2016, and now number 26,358.
- Should annual trends continue, FSV and TSV for YTD July 2017 may increase.

China: TSV approved in 2014-2017



China: FSV approved in 2014-2017



In brief

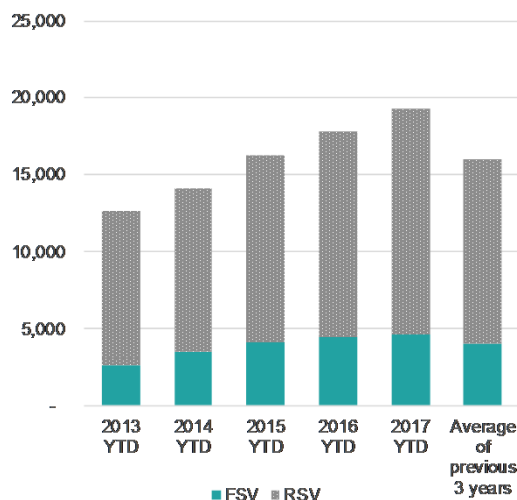
YTD	FSV	RSV	TSV
Visas	4,619	14,650	19,269
Change No.	181	1,305	1,486
Change Percent	4%	10%	8%

Changes are from the YTD 2016 to the YTD 2017

China: TSV by sector (*)

	2014 YTD	2015 YTD	2016 YTD	2017 YTD	Change Number	Change Percentage
Schools	2,167	2,682	3,149	3,733	584	19%
ITP	2,317	2,626	2,740	2,952	212	8%
PTE	3,340	3,979	4,396	4,516	120	3%
Universities	6,249	6,921	7,498	8,063	565	8%
Total	14,073	16,208	17,783	19,264	1481	8%

China: Cumulative FSV and RSV



China: FSV by sector (*)

	2014 YTD	2015 YTD	2016 YTD	2017 YTD	Change Number	Change Percentage
Schools	838	1,006	1,069	1,113	44	4%
ITP	560	650	681	734	53	8%
PTE	959	1,221	1,366	1,451	85	6%
Universities	1,156	1,290	1,322	1,319	-3	0%
Total	3,513	4,167	4,438	4,617	179	4%

(*) Please note that numbers by sector may not always add up to the same as the total because sector is not always stated.

China: TSV by region

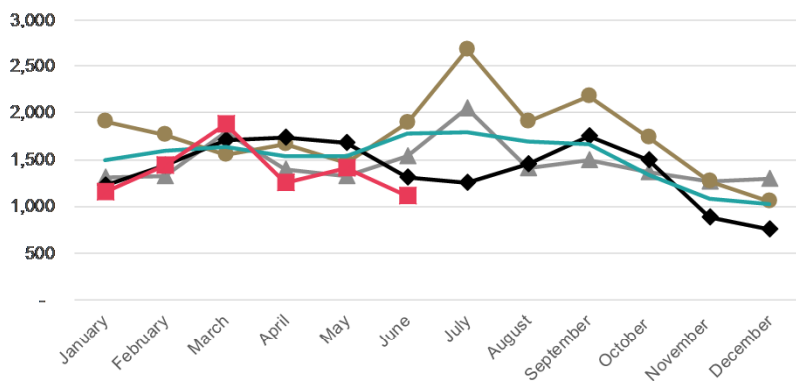
Region	2014 YTD	2015 YTD	2016 YTD	2017 YTD	Change Number	Change Percentage
Auckland	9,396	10,915	11,931	12,921	990	8%
Canterbury	1,213	1,516	1,648	1,884	236	14%
Waikato	1,056	1,141	1,184	1,233	49	4%
Wellington	878	1,087	1,289	1,334	45	3%
Otago	599	575	651	631	-20	-3%
Other	935	975	1,080	1,266	186	17%
Total	14,077	16,209	17,783	19,269	1486	8%

China: 2016 Total visas

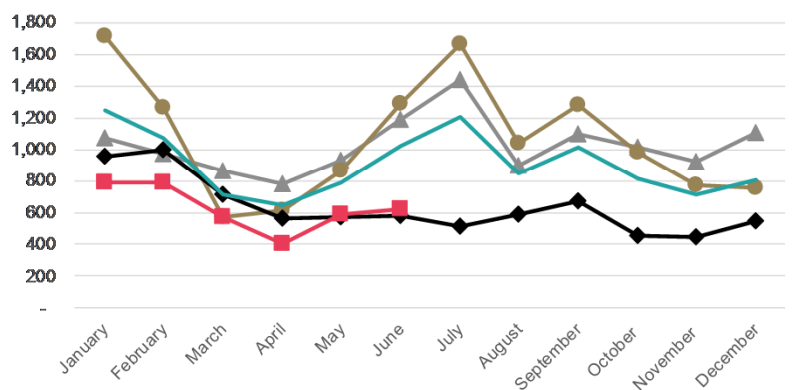
FSV	9,626
RSV	22,735
TSV	32,361

- TSV for the YTD 2017 decreased by 10% (-874) compared to the YTD 2016, underpinned by a decline in FSV (-14%, -608).
- The decline in FSV has been underpinned by a continued decrease in the PTE sector (-44%, -894).
- FSV for universities continues to increase 38% (+183) as the market moves towards higher-level qualifications.
- VSV continue to decline. They currently number 13,613 a decrease of 2% (-4,098) from the same date last year.

India: TSV approved in 2014-2017



India: FSV approved in 2014-2017



In brief

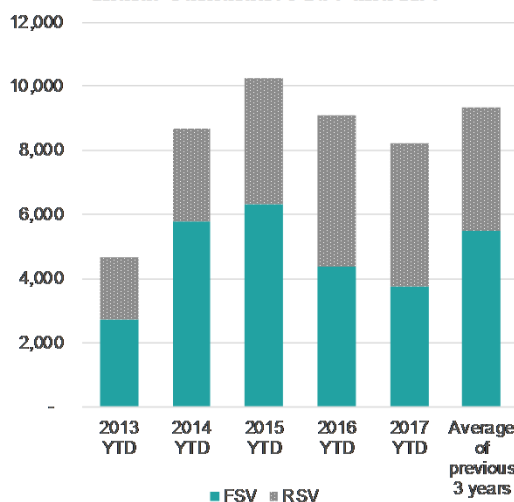
YTD	FSV	RSV	TSV
Visas	3,759	4,460	8,219
Change No.	- 608	- 266	- 874
Change Percent	-14%	-6%	-10%

Changes are from the YTD 2016 to the YTD 2017

India: TSV by sector (*)

	2014 YTD	2015 YTD	2016 YTD	2017 YTD	Change Number	Change Percentage
Schools	28	45	67	61	-6	-9%
ITP	1,608	2,763	2,911	3,058	147	5%
PTE	6,378	6,731	5,333	4,040	-1293	-24%
Universities	651	683	778	1,055	277	36%
Total	8,665	10,222	9,089	8,214	-875	-10%

India: Cumulative FSV and RSV



India: FSV by sector (*)

	2014 YTD	2015 YTD	2016 YTD	2017 YTD	Change Number	Change Percentage
Schools	14	28	40	26	-14	-35%
ITP	1,102	2,138	1,826	1,943	117	6%
PTE	4,307	3,750	2,017	1,123	-894	-44%
Universities	370	390	484	667	183	38%
Total	5,793	6,306	4,367	3,759	-608	-14%

(*) Please note that numbers by sector may not always add up to the same as the total because sector is not always stated.

India: TSV by region

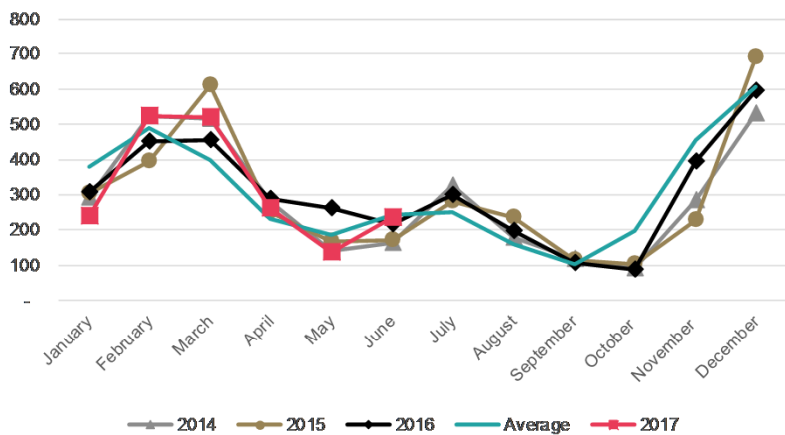
Region	2014 YTD	2015 YTD	2016 YTD	2017 YTD	Change Number	Change Percentage
Auckland	6,107	7,187	6,016	5,434	-582	-10%
Canterbury	794	828	806	714	-92	-11%
Bay of Plenty	694	777	791	564	-227	-29%
Wellington	258	308	353	373	20	6%
Waikato	227	311	338	406	68	20%
Other	590	812	789	728	-61	-8%
Total	8,670	10,223	9,093	8,219	-874	-10%

India: 2016 Total visas

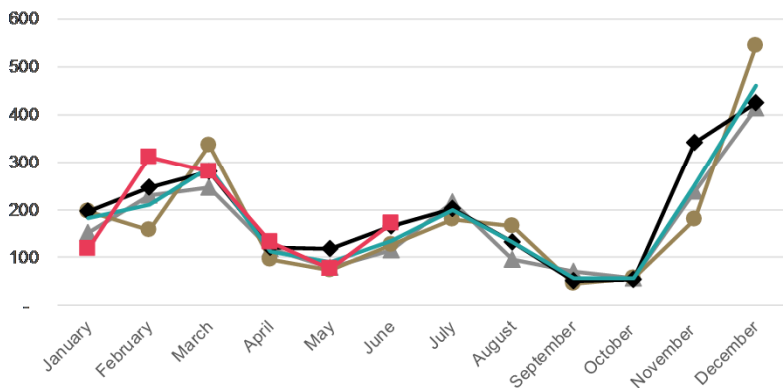
FSV	7,590
RSV	9,091
TSV	16,681

- TSV for the YTD 2017 decreased by 4% (+71) compared to the YTD 2016, reflective of a decrease across all sectors excluding Universities (+10%, +38).
- Though FSV for the ITP and PTE sectors have declined, FSV for Universities continue to increase (+21, +40).
- VSV were 2,994 on 1 July 2017, an increase of 4% (+124) over the same date last year.
- FSV and TSV for YTD July 2017 are expected to increase marginally, acknowledging annual trends.

Japan: TSV approved in 2014-2017



Japan: FSV approved in 2014-2017



In brief

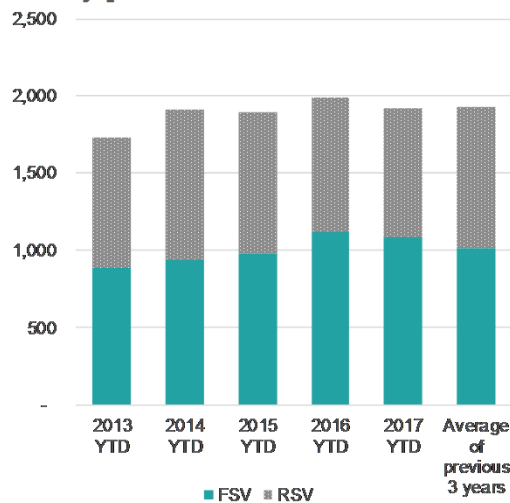
	FSV	RSV	TSV
YTD	1,087	828	1,915
Change No.	- 34	- 37	- 71
Change Percent	-3%	-4%	-4%

Changes are from the YTD 2016 to the YTD 2017

Japan: TSV by sector (*)

	2014 YTD	2015 YTD	2016 YTD	2017 YTD	Change Number	Change Percentage
Schools	797	791	808	803	-5	-1%
ITP	115	87	115	87	-28	-24%
PTE	614	636	660	593	-67	-10%
Universities	364	353	393	431	38	10%
Total	1,890	1,867	1,976	1,914	-62	-3%

Japan: Cumulative FSV and RSV



Japan: 2016 Total visas

FSV	2,323
RSV	1,340
TSV	3,663

Japan: FSV by sector (*)

	2014 YTD	2015 YTD	2016 YTD	2017 YTD	Change Number	Change Percentage
Schools	299	315	359	365	6	2%
ITP	72	54	85	49	-36	-42%
PTE	405	420	472	437	-35	-7%
Universities	147	166	195	235	40	21%
Total	923	955	1,111	1,086	-25	-2%

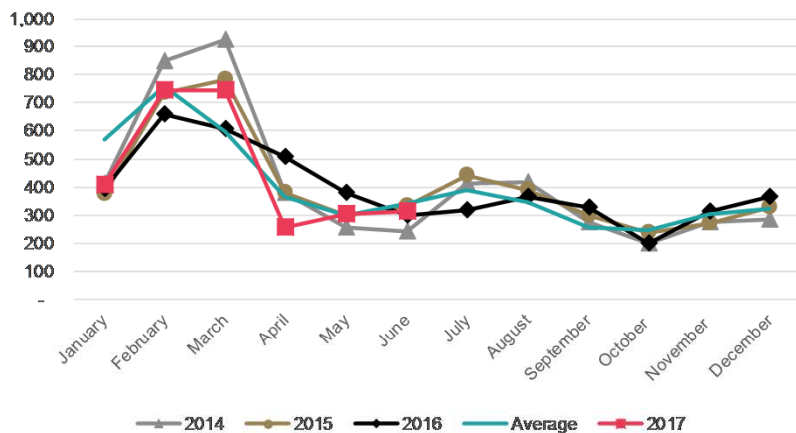
(* Please note that numbers by sector may not always add up to the same as the total because sector is not always stated.

Japan: TSV by region

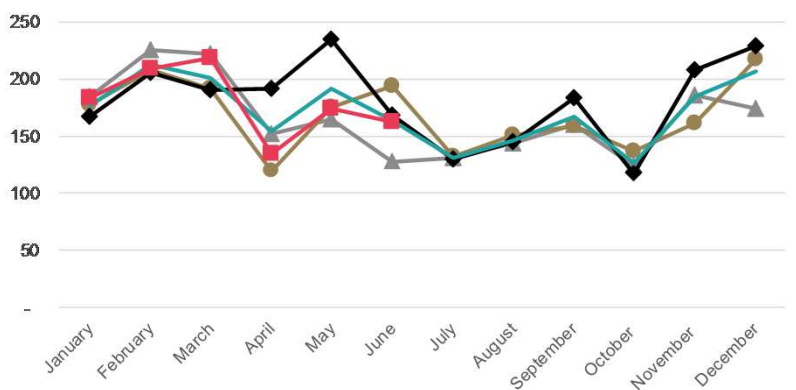
Region	2014 YTD	2015 YTD	2016 YTD	2017 YTD	Change Number	Change Percentage
Auckland	860	866	906	827	-79	-9%
Canterbury	283	307	332	343	11	3%
Manawatu	228	204	181	198	17	9%
Wellington	121	125	149	147	-2	-1%
Otago	129	118	105	112	7	7%
Other	286	275	313	288	-25	-8%
Total	1,907	1,895	1,986	1,915	-71	-4%

- TSV for 2017 are stable (-3%, - 82) compared to the YTD 2016.
- TSV have decreased for the PTE (-16%, -144) and Universities (-9%, -40) sectors.
- The decrease in PTE TSV is driven by a decrease in PTE FSV (-15%, -81).
- There are currently 3,658 VSV, an increase of 3% (+103) compared to 1 July 2017.

Korea: TSV approved in 2014-2017



Korea: FSV approved in 2014-2017



In brief

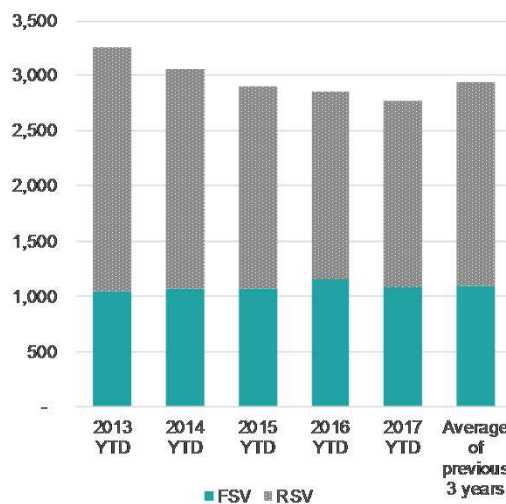
YTD	FSV	RSV	TSV
Visas	1,082	1,683	2,765
Change No.	- 75	- 7	- 82
Change Percent	-6%	0%	-3%

Changes are from the YTD 2016 to the YTD 2017

Korea: TSV by sector (*)

	2014 YTD	2015 YTD	2016 YTD	2017 YTD	Change Number	Change Percentage
Schools	1,287	1,222	1,134	1,222	88	8%
ITP	143	145	168	199	31	18%
PTE	992	1,015	1,067	906	-161	-15%
Universities	639	521	478	438	-40	-8%
Total	3,061	2,903	2,847	2,765	-82	-3%

Korea: Cumulative FSV and RSV



Korea: FSV by sector (*)

	2014 YTD	2015 YTD	2016 YTD	2017 YTD	Change Number	Change Percentage
Schools	382	383	407	405	-2	0%
ITP	47	59	72	86	14	19%
PTE	565	562	620	522	-98	-16%
Universities	83	63	58	69	11	19%
Total	1,077	1,067	1,157	1,082	-75	-6%

(*) Please note that numbers by sector may not always add up to the same as the total because sector is not always stated.

Korea: TSV by region

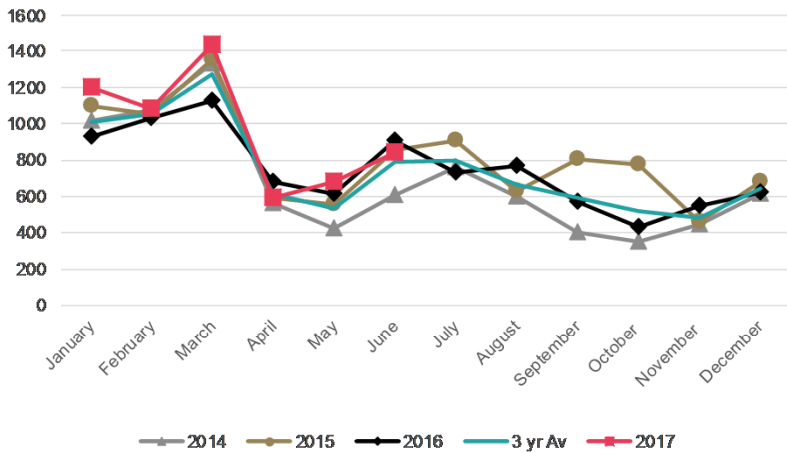
Region	2014 YTD	2015 YTD	2016 YTD	2017 YTD	Change Number	Change Percentage
Auckland	2,164	2,064	1,995	1,827	-168	-8%
Bay of Plenty	201	216	269	325	56	21%
Canterbury	232	203	156	159	3	2%
Waikato	130	98	90	92	2	2%
Wellington	89	82	88	98	10	11%
Other	246	240	249	264	15	6%
Total	3,062	2,903	2,847	2,765	-82	-3%

Korea: 2016 Total visas

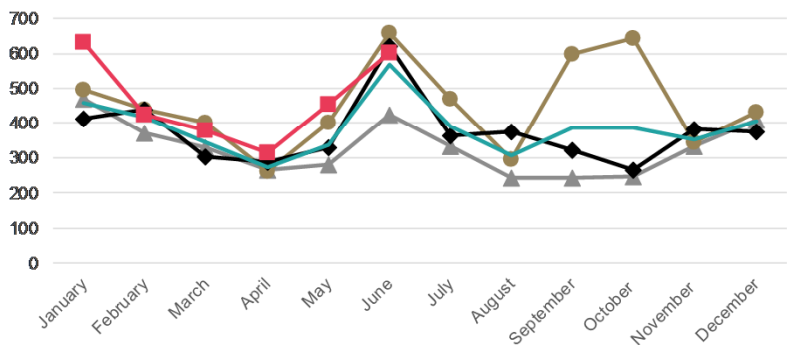
FSV	2,169
RSV	2,561
TSV	4,730

- TSV have increased by 10% (+539) in the YTD 2017 compared to the YTD 2016. This increase was across most sectors excluding the ITP sector, who decreased by 3% (-15).
- FSV growth (+174%, +411) driven by the Universities sector (+32%, +237) underpins overall TSV growth

South East Asia: TSV approved in 2014-2017



South East Asia: FSVs approved in 2014-2017



In brief

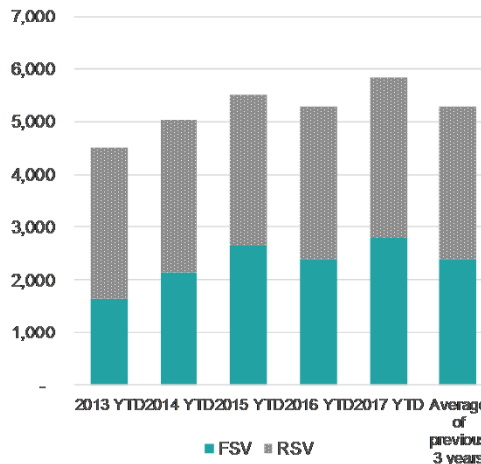
YTD	FSV	RSV	TSV
Visas	2,807	3,015	5,822
Change No.	411	128	539
Change Percent	17%	4%	10%

Changes are from the YTD 2016 to the YTD 2017

South East Asia: TSV by sector (*)

	2014 YTD	2015 YTD	2016 YTD	2017 YTD	Change Number	Change Percentage
Schools	972	1,096	1,039	1,148	109	10%
ITP	414	464	547	532	-15	-3%
PTE	1,422	1,778	1,576	1,801	225	14%
Universities	2,208	2,160	2,114	2,337	223	11%
Total	5,016	5,498	5,276	5,818	542	10%

South East Asia: Cumulative FSV and RSV



South East Asia: FSV by sector (*)

	2014 YTD	2015 YTD	2016 YTD	2017 YTD	Change Number	Change Percentage
Schools	397	422	379	425	46	12%
ITP	168	238	285	273	-12	-4%
PTE	923	1,272	979	1,123	144	15%
Universities	644	720	749	986	237	32%
Total	2,132	2,652	2,392	2,807	415	17%

(*) Please note that numbers by sector may not always add up to the same as the total because sector is not always stated.

South East Asia: TSV by region

Region	2014 YTD	2015 YTD	2016 YTD	2017 YTD	Change Number	Change Percentage
Auckland	2,554	2,891	2,691	3,085	394	15%
Wellington	636	613	627	730	103	16%
Canterbury	477	539	556	595	39	7%
Otago	475	496	438	454	16	4%
Manawatu	303	335	289	267	-22	-8%
Other	576	629	682	691	9	1%
Total	5,021	5,503	5,283	5,822	539	10%

South East Asia: 2016 total visas

FSV	4,483
RSV	4,476
TSV	8,959

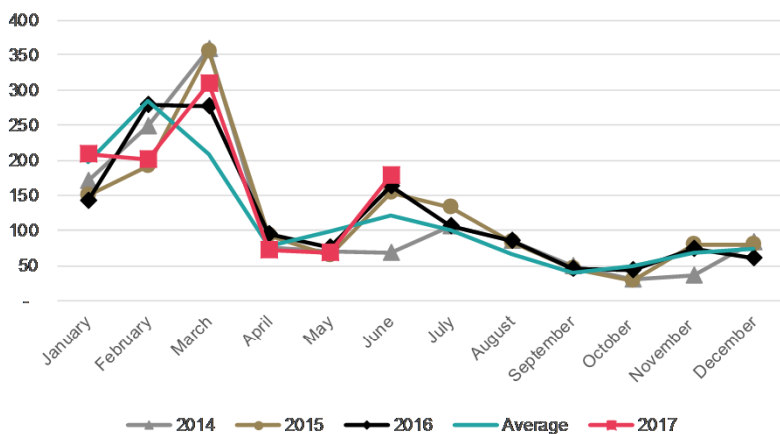
Malaysia

June 2017

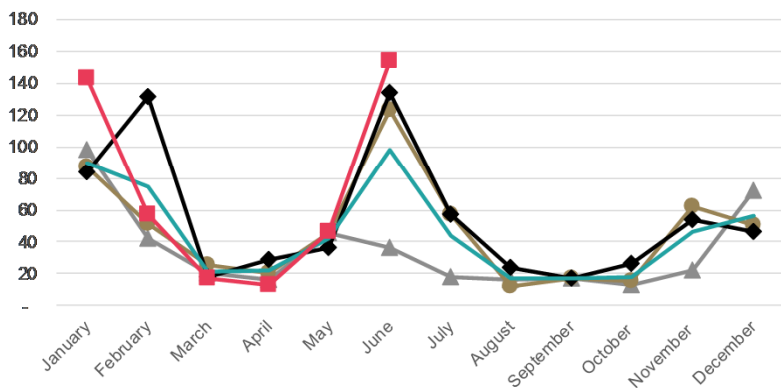


- TSV for the YTD 2017 are stable (+1%, +12) compared to the YTD 2016.
- FSV has been stable (0%, -2) which was balanced by an increase in RSV (+2%, +14). Both movements are driven by the Universities sector.
- The universities sector has accounted for 77% of TSV for the YTD 2017.
- VSV were 1,818 on 1 July 2017, which is a 10% (+170) increase since the same day in 2016.

Malaysia: TSV approved in 2014-2017



Malaysia: FSV approved in 2014-2017



In brief

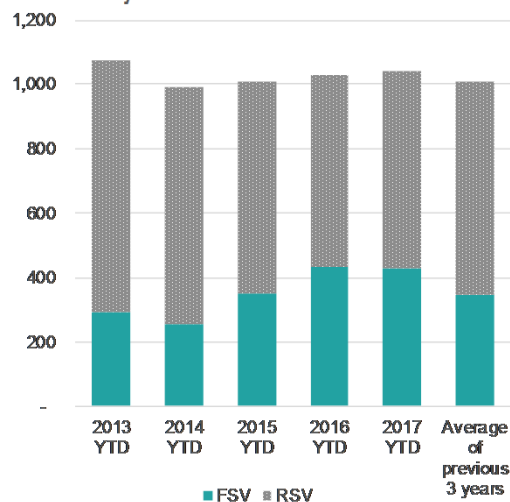
YTD	FSV	RSV	TSV
Visas	430	611	1,041
Change No.	- 2	14	12
Change Percent	0%	2%	1%

Changes are from the YTD 2016 to the YTD 2017

Malaysia: TSV by sector (*)

	2014 YTD	2015 YTD	2016 YTD	2017 YTD	Change Number	Change Percentage
Schools	57	61	61	55	-6	-10%
ITP	78	63	82	84	2	2%
PTE	65	79	80	100	20	25%
Universities	790	800	804	802	-2	0%
Total	990	1,003	1,027	1,041	14	1%

Malaysia: Cumulative FSV and RSV



Malaysia: FSV by sector (*)

	2014 YTD	2015 YTD	2016 YTD	2017 YTD	Change Number	Change Percentage
Schools	26	19	21	15	-6	-29%
ITP	29	26	34	35	1	3%
PTE	33	48	43	54	11	26%
Universities	168	256	332	326	-6	-2%
Total	256	349	430	430	0	0%

(* Please note that numbers by sector may not always add up to the same as the total because sector is not always stated.

Malaysia: TSV by region

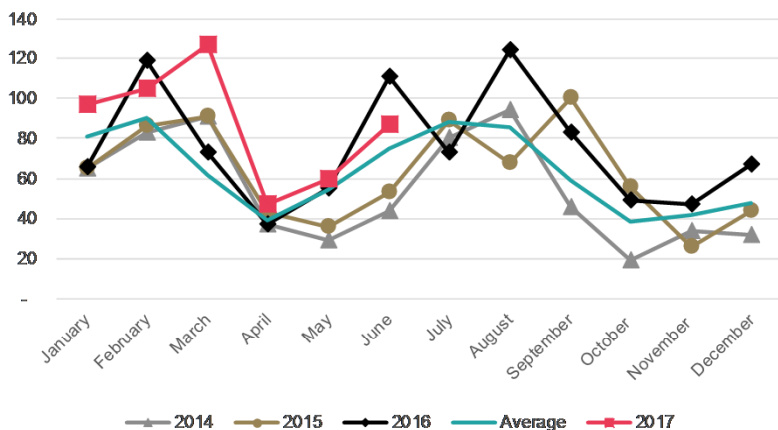
Region	2014 YTD	2015 YTD	2016 YTD	2017 YTD	Change Number	Change Percentage
Auckland	377	409	406	428	22	5%
Otago	236	231	198	196	-2	-1%
Canterbury	132	133	171	173	2	1%
Wellington	100	111	125	119	-6	-5%
Waikato	65	48	65	53	-12	-18%
Other	81	73	64	72	8	13%
Total	991	1,005	1,029	1,041	12	1%

Malaysia: 2016 Total visas

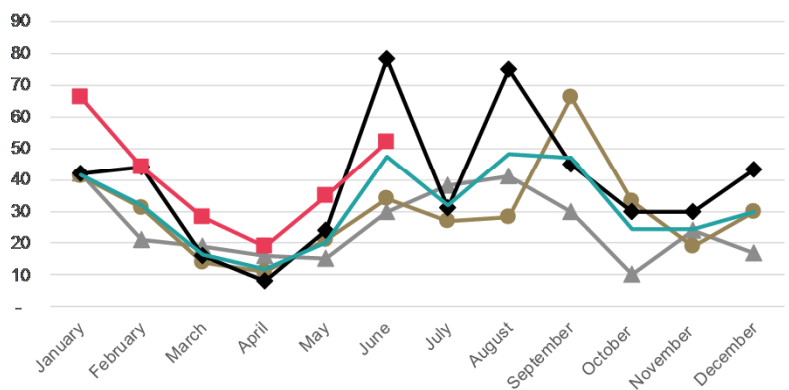
FSV	656
RSV	789
TSV	1,445

- TSV for the YTD 2017 have increased (+13%, +62) compared to the YTD 2016, driven by the Universities sector (+22%, +49) which accounts for 53% of the market share.
- FSV growth (+15%, +32) can also be attributed to growth in the Universities sector (+45%, +39).
- There were 1,012 VSV on 1 July 2017, which is 35% (+263) more than the same date in 2016.

Indonesia: TSV approved in 2014-2017



Indonesia: FSV approved in 2014-2017



In brief

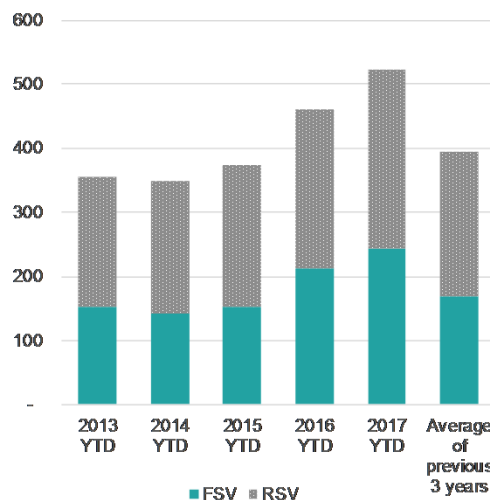
YTD	FSV	RSV	TSV
Visas	244	279	523
Change No.	32	30	62
Change Percent	15%	12%	13%

Changes are from the YTD 2016 to the YTD 2017

Indonesia: TSV by sector (*)

	2014 YTD	2015 YTD	2016 YTD	2017 YTD	Change Number	Change Percentage
Schools	19	22	30	29	-1	-3%
ITP	26	44	84	66	-18	-21%
PTE	95	95	124	156	32	26%
Universities	209	213	223	272	49	22%
Total	349	374	461	523	62	13%

Indonesia: Cumulative FSV and RSV



Indonesia: 2016 Total visas

FSV	466
RSV	438
TSV	904

Indonesia: FSV by sector (*)

	2014 YTD	2015 YTD	2016 YTD	2017 YTD	Change Number	Change Percentage
Schools	9	9	11	11	0	0%
ITP	9	28	54	33	-21	-39%
PTE	46	36	61	75	14	23%
Universities	79	79	86	125	39	45%
Total	143	152	212	244	32	15%

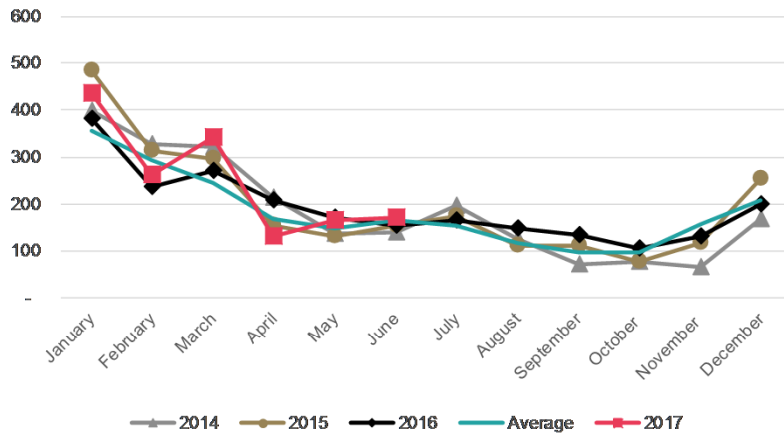
(*) Please note that numbers by sector may not always add up to the same as the total because sector is not always stated.

Indonesia: TSV by region

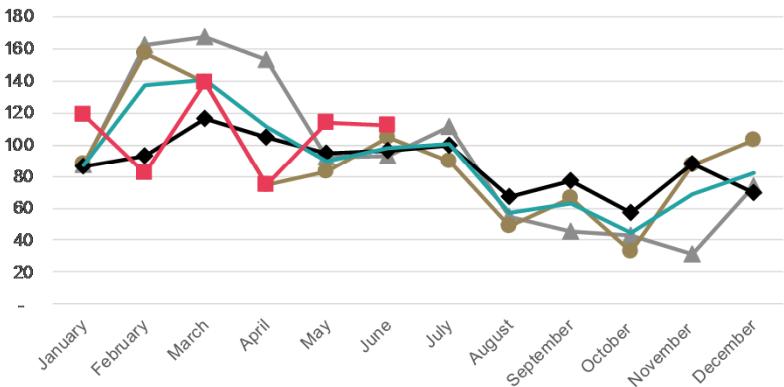
Region	2014 YTD	2015 YTD	2016 YTD	2017 YTD	Change Number	Change Percentage
Auckland	211	211	231	274	43	19%
Wellington	41	54	56	64	8	14%
Canterbury	35	34	35	54	19	54%
Manawatu	24	30	40	45	5	13%
Otago	15	16	21	35	14	67%
Other	23	29	78	51	-27	-35%
Total	349	374	461	523	62	13%

- TSV for Thailand have increased by 6% (+85) compared to the YTD 2016, owing to increases in all sectors except the ITP sectors which declined 49% (-33).
- All sectors have increased in FSV excluding the ITP sector, who declined 77% (-17).
- FSV for the university (+62%, +24) and PTE (+15%, +46) sectors continue to increase.
- VSV for 1 July 2017 were 2,149 a 4% (+84) increase from the same day in 2016.

Thailand: TSV approved in 2014-2017



Thailand: FSV approved in 2014-2017



In brief

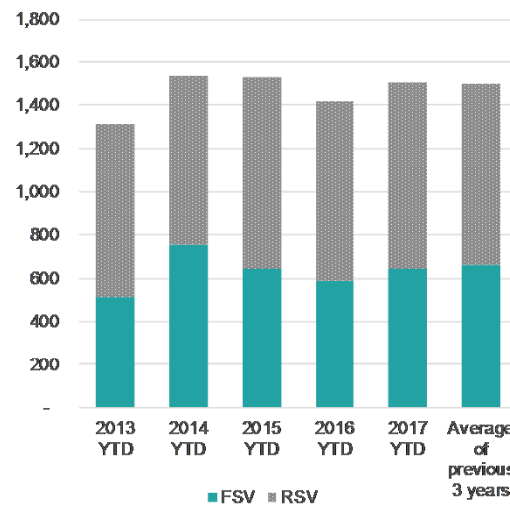
YTD	FSV	RSV	TSV
Visas	641	863	1,504
Change No.	50	35	85
Change Percent	8%	4%	6%

Changes are from the YTD 2016 to the YTD 2017

Thailand: TSV by sector (*)

	2014 YTD	2015 YTD	2016 YTD	2017 YTD	Change Number	Change Percentage
Schools	685	787	663	673	10	2%
ITP	78	61	67	34	-33	-49%
PTE	496	430	450	534	84	19%
Universities	279	254	239	263	24	10%
Total	1,538	1,532	1,419	1,504	85	6%

Thailand: Cumulative FSV and RSV



Thailand: 2016 Total visas

FSV	1,050
RSV	1,250
TSV	2,300

Thailand: FSV by sector (*)

	2014 YTD	2015 YTD	2016 YTD	2017 YTD	Change Number	Change Percentage
Schools	281	308	231	228	-3	-1%
ITP	27	14	22	5	-17	-77%
PTE	363	279	299	345	46	15%
Universities	83	46	39	63	24	62%
Total	754	647	591	641	50	8%

(*) Please note that numbers by sector may not always add up to the same as the total because sector is not always stated.

Thailand: TSV by region

Region	2014 YTD	2015 YTD	2016 YTD	2017 YTD	Change Number	Change Percentage
Auckland	766	759	722	848	126	17%
Canterbury	188	183	186	181	-5	-3%
Wellington	109	97	105	104	-1	-1%
Otago	91	112	90	85	-5	-6%
Manawatu	104	135	64	50	-14	-22%
Other	280	246	252	236	-16	-6%
Total	1,538	1,532	1,419	1,504	85	6%

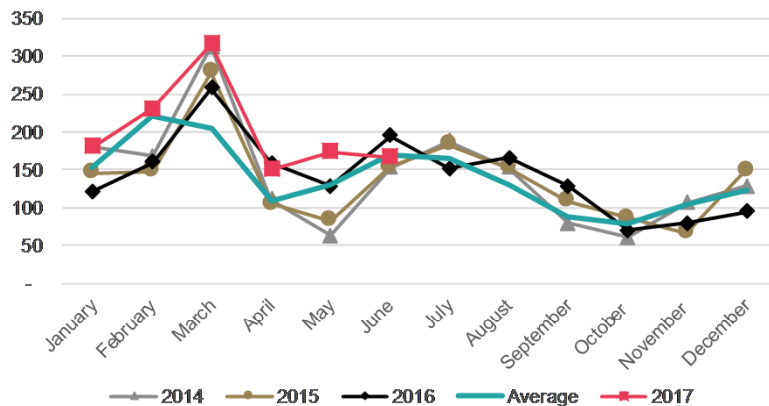
Viet Nam

July 2017

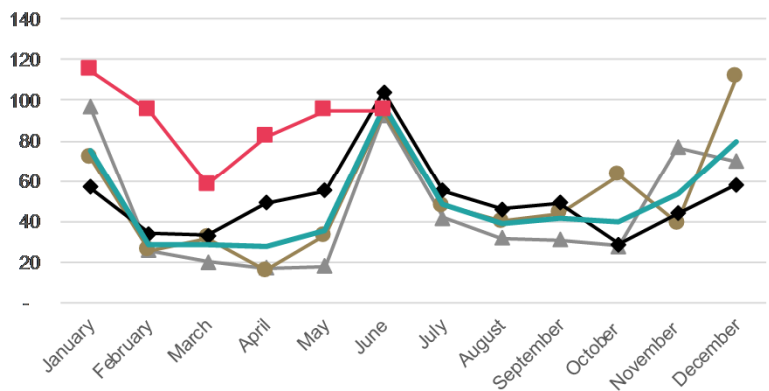


- TSV for Viet Nam have increased by 4% (+48) for the YTD 2017 when compared to the YTD 2016, driven by an increase in TSV for the Schools sector (+26%, +56).
- FSV growth (+40%, +153) continues to be underpinned by the growth in the Universities sector (+85%, +104).
- VSV for 1 July 2017 were 1,801, an increase for 18% (+273) since the same day in 2016.

Viet Nam: TSV approved in 2014-2017



Viet Nam: FSV approved in 2014-2017



In brief

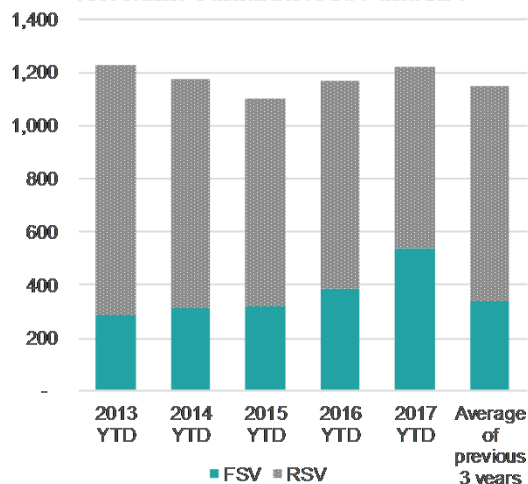
YTD	FSV	RSV	TSV
Visas	540	678	1,218
Change No.	153	- 105	48
Change Percent	40%	-13%	4%

Changes are from the YTD 2016 to the YTD 2017

Viet Nam: TSV by sector (*)

	2014 YTD	2015 YTD	2016 YTD	2017 YTD	Change Number	Change Percentage
Schools	171	164	213	269	56	26%
ITP	116	134	145	126	-19	-13%
PTE	286	267	331	332	1	0%
Universities	601	533	481	488	7	1%
Total	1,174	1,098	1,170	1,215	45	4%

Viet Nam: Cumulative FSV and RSV



Viet Nam: FSV by sector (*)

	2014 YTD	2015 YTD	2016 YTD	2017 YTD	Change Number	Change Percentage
Schools	61	64	97	126	29	30%
ITP	28	38	46	44	-2	-4%
PTE	81	73	121	143	22	18%
Universities	143	146	123	227	104	85%
Total	313	321	387	540	153	40%

(* Please note that numbers by sector may not always add up to the same as the total because sector is not always stated.

Viet Nam: TSV by region

Region	2014 YTD	2015 YTD	2016 YTD	2017 YTD	Change Number	Change Percentage
Auckland	635	569	666	667	1	0%
Wellington	255	237	209	249	40	19%
Manawatu	97	106	112	87	-25	-22%
Canterbury	69	55	51	62	11	22%
Southland	35	44	42	38	-4	-10%
Other	83	87	90	115	25	28%
Total	1,174	1,098	1,170	1,218	48	4%

Viet Nam: 2016 Total visas

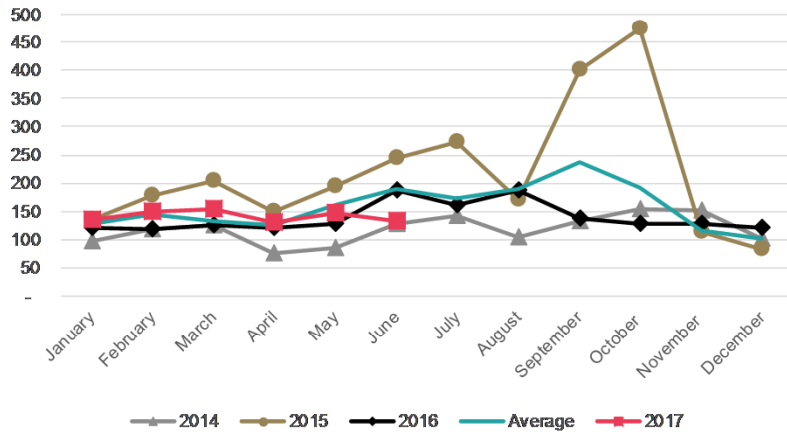
FSV	613
RSV	1,093
TSV	1,706

Philippines

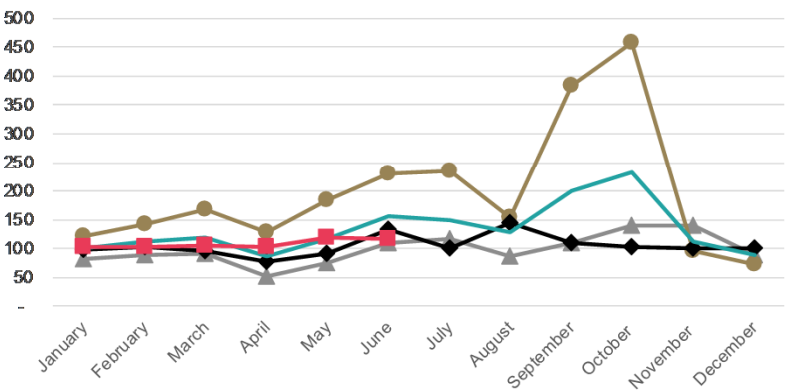
June 2017

- TSV for the Philippines have increased by 6% (+51) in the YTD 2017 compared to the YTD 2016.
- Most of this increase is underpinned by growth in FSV (+9%, +53), particularly within the PTE sector (+7%, +30), suggesting an increase in students in the latter half of the year.
- VSV on July 1 2017 are 1,836, a decrease of 14% (-307) from the same date in 2016.

Philippines: TSV approved in 2014-2017



Philippines: FSV approved in 2014-2017



In brief

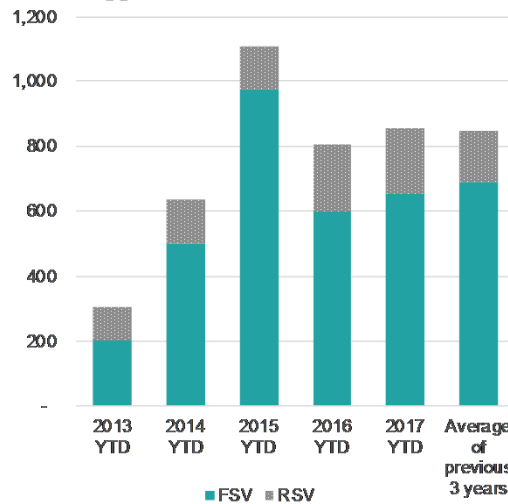
YTD	FSV	RSV	TSV
Visas	652	202	854
Change No.	53	- 2	51
Change Percent	9%	-1%	6%

Changes are from the YTD 2016 to the YTD 2017

Philippines: TSV by sector (*)

	2014 YTD	2015 YTD	2016 YTD	2017 YTD	Change Number	Change Percentage
Schools	23	27	35	25	-10	-29%
IITP	98	158	153	178	25	16%
PTE	462	868	556	566	10	2%
Universities	47	50	54	84	30	56%
Total	630	1,103	798	853	55	7%

Philippines: Cumulative FSV and RSV



Philippines: 2016 Total visas

FSV	1,259
RSV	408
TSV	1,667

Philippines: FSV by sector (*)

	2014 YTD	2015 YTD	2016 YTD	2017 YTD	Change Number	Change Percentage
Schools	10	11	12	6	-6	-50%
IITP	63	128	120	139	19	16%
PTE	399	801	433	463	30	7%
Universities	25	30	32	44	12	38%
Total	497	970	597	652	55	9%

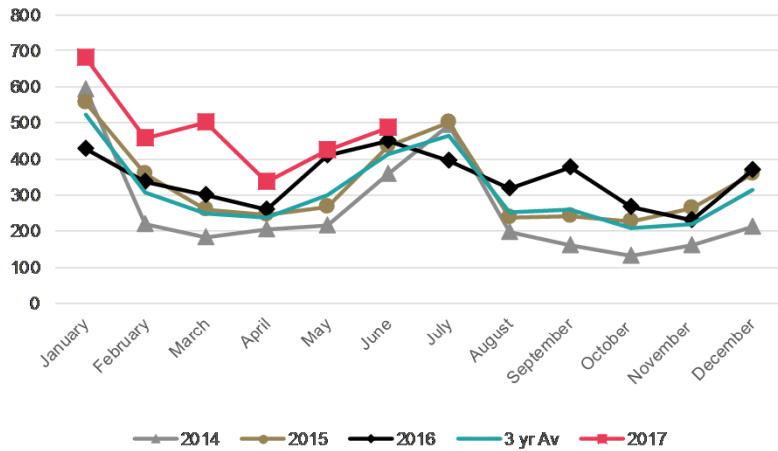
(*) Please note that numbers by sector may not always add up to the same as the total because sector is not always stated.

Philippines: TSV by region

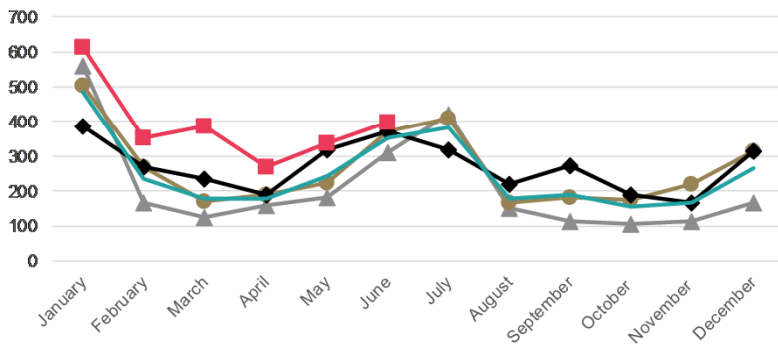
Region	2014 YTD	2015 YTD	2016 YTD	2017 YTD	Change Number	Change Percentage
Auckland	500	812	537	566	29	5%
Bay of Plenty	42	116	92	85	-7	-8%
Canterbury	20	88	77	78	1	1%
Wellington	16	27	28	44	16	57%
Waikato	17	20	20	16	-4	-20%
Other	39	43	49	65	16	33%
Total	634	1,106	803	854	51	6%

- TSV have increased by 32% (+702) in the YTD 2017 compared to the YTD 2016. All of the focus markets (Brazil, Chile, Colombia) for Latin America have seen increases of 100 or more students for the 2017 YTD compared to the 2016 YTD.
- Most of this increase in FSV is in the PTE (+32%, +401) and schools (+46%, +151) sector.
- VSV on 1 July 2017 are 3,350, an increase of 26% (+682) from the same date in 2016.

Latin America: TSV approved in 2014-2017



Latin America: FSVs approved in 2014-2017

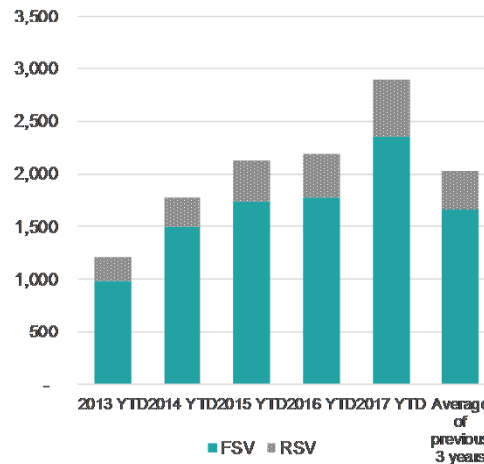


In brief

	FSV	RSV	TSV
YTD			
Visas	2,357	529	2,886
Change No.	584	119	703
Change Percent	33%	29%	32%

Changes are from the YTD 2016 to the YTD 2017

Latin America: Cumulative FSV and RSV



Latin America: 2016 total visas

FSV	3,252
RSV	883
TSV	4,135

Latin America: TSV by sector (*)

	2014 YTD	2015 YTD	2016 YTD	2017 YTD	Change Number	Change Percentage
Schools	599	450	364	511	147	40%
ITP	55	80	87	105	18	21%
PTE	789	1,254	1,499	2,008	509	34%
Universities	270	298	198	240	42	21%
Total	1,713	2,082	2,148	2,864	716	33%

Latin America: FSV by sector (*)

	2014 YTD	2015 YTD	2016 YTD	2017 YTD	Change Number	Change Percentage
Schools	561	409	327	478	151	46%
ITP	34	48	50	68	18	36%
PTE	667	1,052	1,241	1,642	401	32%
Universities	183	185	120	147	27	23%
Total	1,445	1,694	1,738	2,335	597	34%

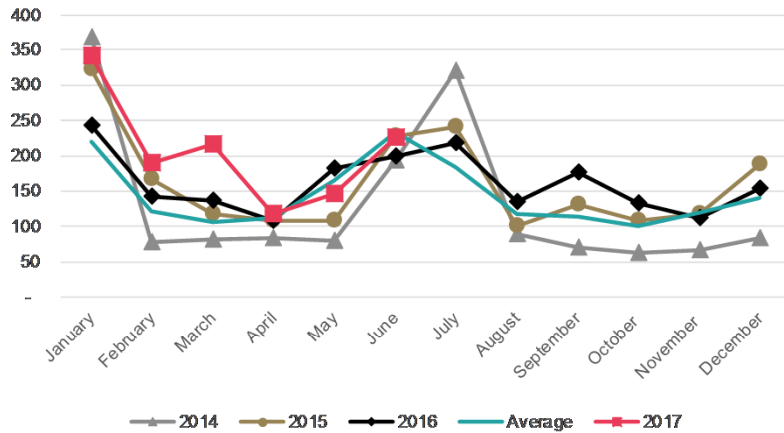
(*) Please note that numbers by sector may not always add up to the same as the total because sector is not always stated.

Latin America: TSV by region

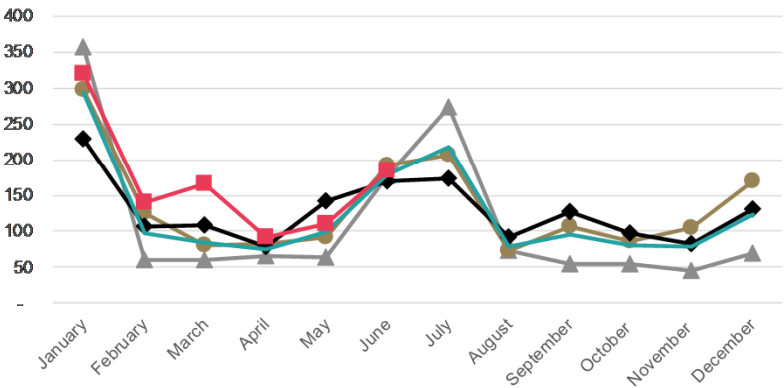
Region	2014 YTD	2015 YTD	2016 YTD	2017 YTD	Change Number	Change Percentage
Auckland	1,082	1,444	1,546	1,964	418	27%
Southland	47	117	108	238	130	120%
Canterbury	189	119	122	195	73	60%
Wellington	154	140	103	176	73	71%
Bay of Plent	57	99	56	90	34	61%
Other	242	201	248	223	-25	-10%
Total	1,771	2,120	2,183	2,886	703	32%

- TSV for the YTD 2017 are up 25% (+201) compared to the YTD 2016.
- An increase in FSV for the PTE (+21%, +1174) and Schools (+26%, +57) sector accounts for an overall FSV increase (+21%, +176).
- VSV for 1 July 2017 were 1,315, a 19% (+ 108) increase from the same date in 2016.

Brazil: TSV approved in 2014-2017



Brazil: FSV approved in 2014-2017



In brief

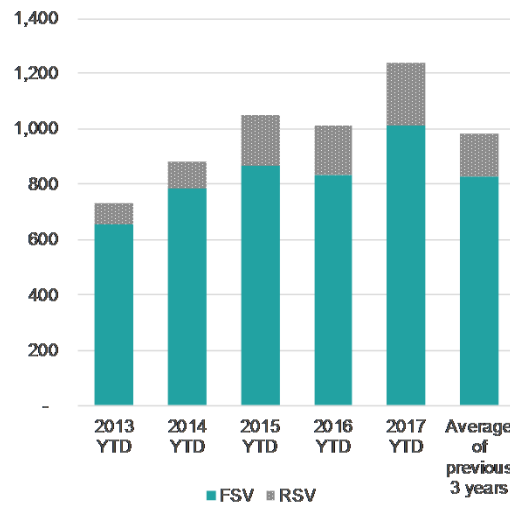
	FSV	RSV	TSV
YTD			
Visas	1,011	226	1,237
Change No.	176	49	225
Change Percent	21%	28%	22%

Changes are from the YTD 2016 to the YTD 2017

Brazil: TSV by sector (*)

	2014 YTD	2015 YTD	2016 YTD	2017 YTD	Change Number	Change Percentage
Schools	363	270	235	289	54	23%
ITP	21	30	35	44	9	26%
PTE	327	594	682	845	163	24%
Universities	153	143	48	55	7	15%
Total	864	1,037	1,000	1,233	233	23%

Brazil: Cumulative FSV and RSV



Brazil: FSV by sector (*)

	2014 YTD	2015 YTD	2016 YTD	2017 YTD	Change Number	Change Percentage
Schools	351	248	216	273	57	26%
ITP	12	18	19	30	11	58%
PTE	279	507	565	682	117	21%
Universities	123	83	23	22	-1	-4%
Total	765	856	823	1,007	184	22%

(*) Please note that numbers by sector may not always add up to the same as the total because sector is not always stated.

Brazil: TSV by region

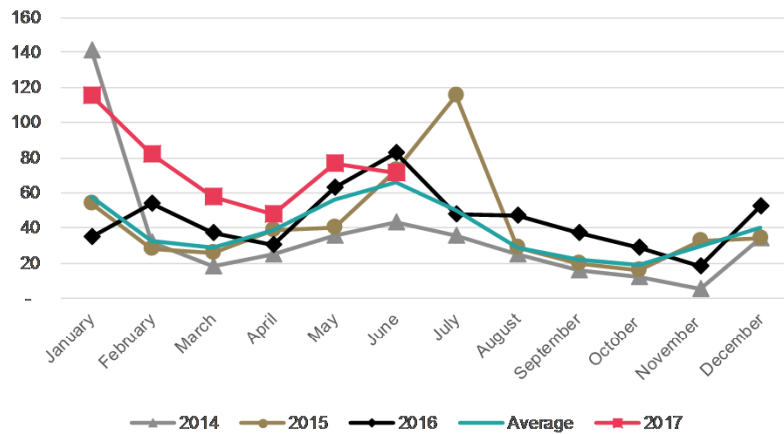
Region	2014 YTD	2015 YTD	2016 YTD	2017 YTD	Change Number	Change Percentage
Auckland	477	665	696	816	120	17%
Canterbury	86	64	60	103	43	72%
Wellington	86	67	50	59	9	18%
Southland	32	84	52	98	46	88%
Bay of Plent	37	61	30	54	24	80%
Other	165	109	124	107	-17	-14%
Total	883	1,050	1,012	1,237	225	22%

Brazil: 2016 Total visas

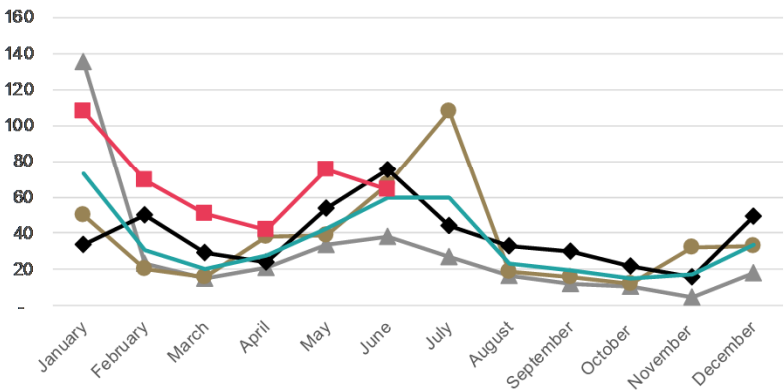
FSV	1,538
RSV	400
TSV	1,938

- TSV are up 49% (+149) for the 2017 YTD compared to the YTD 2016.
- TSV levels for Sector (+123%, +75) remains elevated compared to past years. This can be attributed to the Penguins Without Borders programme, which saw an FSV increase of 122% (+71). FSV for the PTE sector have also continued to increase (+45%, +77).
- VSV were 4529 on 1 July 2017, a 46% (+167) increase on the same day in 2016.

Chile: TSV approved in 2014-2017



Chile: FSV approved in 2014-2017

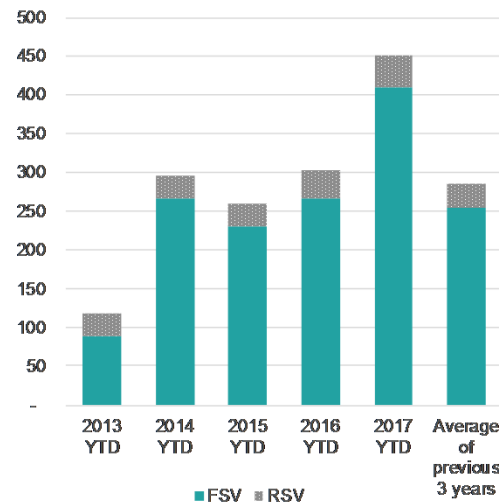


In brief

YTD	FSV	RSV	TSV
Visas	409	42	451
Change No.	143	6	149
Change Percent	54%	17%	49%

Changes are from the YTD 2016 to the YTD 2017

Chile: Cumulative FSV and RSV



Chile: 2016 Total visas

FSV	460
RSV	73
TSV	533

Chile: TSV by sector (*)

	2014 YTD	2015 YTD	2016 YTD	2017 YTD	Change Number	Change Percentage
Schools	155	80	61	136	75	123%
ITP	6	10	15	15	0	0%
PTE	104	134	191	265	74	39%
Universities	23	26	28	29	1	4%
Total	288	250	295	445	150	51%

Chile: FSV by sector (*)

	2014 YTD	2015 YTD	2016 YTD	2017 YTD	Change Number	Change Percentage
Schools	147	74	58	129	71	122%
ITP	4	2	9	4	-5	-56%
PTE	97	126	172	249	77	45%
Universities	11	18	20	21	1	5%
Total	259	220	259	403	144	56%

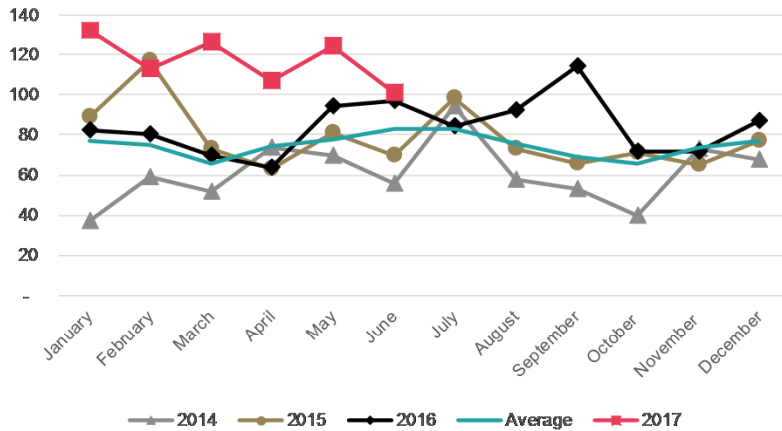
(*) Please note that numbers by sector may not always add up to the same as the total because sector is not always stated.

Chile: TSV by region

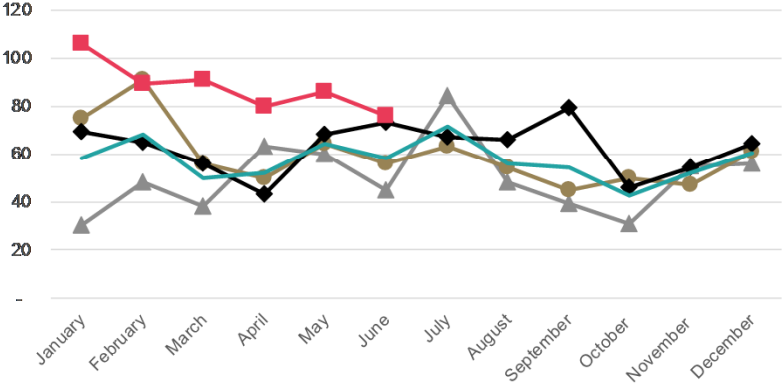
Region	2014 YTD	2015 YTD	2016 YTD	2017 YTD	Change Number	Change Percentage
Auckland	171	164	187	277	90	48%
Wellington	39	14	18	40	22	122%
Canterbury	43	11	7	39	32	457%
Bay of Plenty	12	31	21	19	-2	-10%
Southland	5	8	13	34	21	162%
Other	25	32	56	42	-14	-25%
Total	295	260	302	451	149	49%

- TSV increased by 44% (+216) for the YTD 2017. FSV increased by 41% (+154) for YTD 2017.
- The main FSV contributor was the PTE sector (+35%, +118) with strong growth also registered in the Universities sector (+81%, 22).
- VSV were 874 on 1 July 2017, an increase of 42% (+258) compared to the same day in 2016. This is the highest number post 2014.

Colombia: TSV approved in 2014-2017



Colombia: FSV approved in 2014-2017



In brief

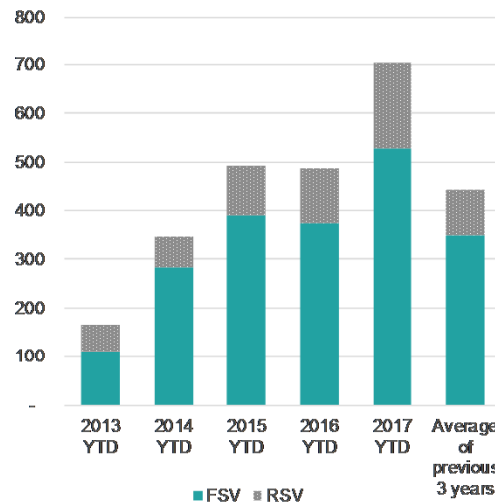
YTD	FSV	RSV	TSV
Visas	528	175	703
Change No.	154	62	216
Change Percent	41%	55%	44%

Changes are from the YTD 2016 to the YTD 2017

Colombia: TSV by sector (*)

	2014 YTD	2015 YTD	2016 YTD	2017 YTD	Change Number	Change Percentage
Schools	12	23	9	10	1	11%
ITP	8	19	16	24	8	50%
PTE	268	402	421	600	179	43%
Universities	43	49	41	69	28	68%
Total	331	493	487	703	216	44%

Colombia: Cumulative FSV and RSV



Colombia: 2016 Total visas

FSV	750
RSV	258
TSV	1,008

Colombia: FSV by sector (*)

	2014 YTD	2015 YTD	2016 YTD	2017 YTD	Change Number	Change Percentage
Schools	11	22	6	10	4	67%
ITP	6	11	6	16	10	167%
PTE	226	327	335	453	118	35%
Universities	25	32	27	49	22	81%
Total	268	392	374	528	154	41%

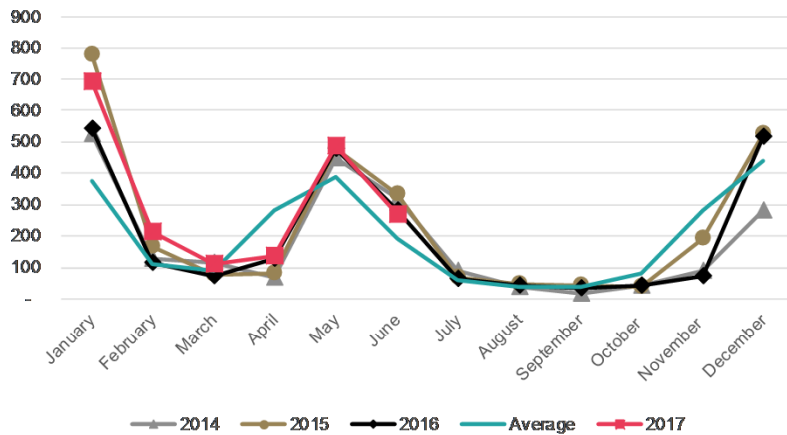
(*) Please note that numbers by sector may not always add up to the same as the total because sector is not always stated.

Colombia: TSV by region

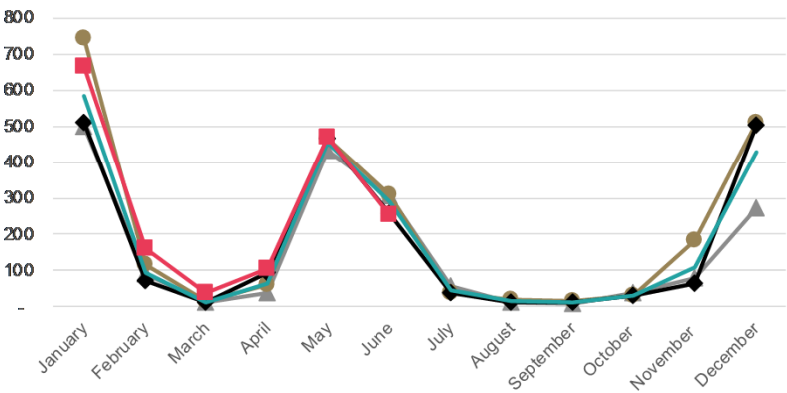
Region	2014 YTD	2015 YTD	2016 YTD	2017 YTD	Change Number	Change Percentage
Auckland	263	411	407	545	138	34%
Canterbury	43	27	26	26	0	0%
Wellington	17	27	19	56	37	195%
Southland	9	16	22	58	36	164%
Waikato	6	4	7	8	1	14%
Other	10	8	6	10	4	67%
Total	348	493	487	703	216	44%

- TSV have increased by 18% (+ 288) for the YTD 2017 compared to YTD 2016.
- FSV have increased by 20% (+283), dominated by the Universities sector (+21%, +274).
- VSV were 2,720 on 1 July 2017, which was an increase of 10% (+249) compared to the same day in 2016.

USA: TSV approved in 2014-2017



USA: FSV approved in 2014-2017

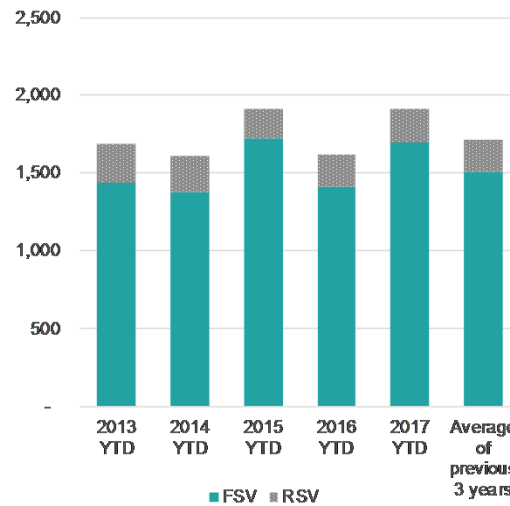


In brief

YTD	FSV	RSV	TSV
Visas	1,694	214	1,908
Change No.	283	5	288
Change Percent	20%	2%	18%

Changes are from the YTD 2016 to the YTD 2017

USA: Cumulative FSV and RSV



USA: 2016 Total visas

FSV	2,071
RSV	326
TSV	2,397

USA: TSV by sector (*)

	2014 YTD	2015 YTD	2016 YTD	2017 YTD	Change Number	Change Percentage
Schools	40	39	35	45	10	29%
IITP	32	46	34	29	-5	-15%
PTE	44	58	42	43	1	2%
Universities	1,479	1,754	1,500	1,783	283	19%
Total	1,595	1,897	1,611	1,908	289	18%

USA: FSV by sector (*)

	2014 YTD	2015 YTD	2016 YTD	2017 YTD	Change Number	Change Percentage
Schools	20	23	17	26	9	53%
IITP	19	35	20	20	0	0%
PTE	36	49	34	35	1	3%
Universities	1,292	1,599	1,331	1,605	274	21%
Total	1,367	1,706	1,402	1,686	284	20%

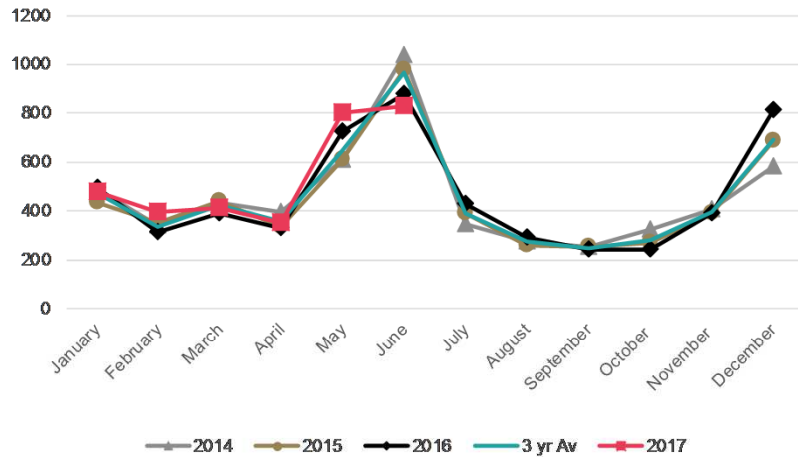
(*) Please note that numbers by sector may not always add up to the same as the total because sector is not always stated.

USA: TSV by region

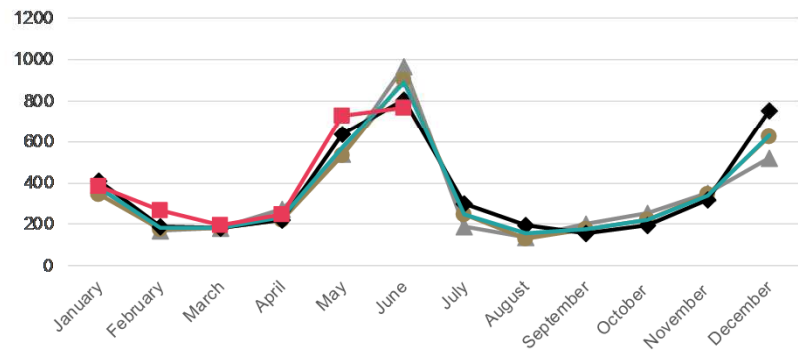
Region	2014 YTD	2015 YTD	2016 YTD	2017 YTD	Change Number	Change Percentage
Auckland	516	612	520	649	129	25%
Otago	431	538	466	566	100	21%
Wellington	263	304	261	289	28	11%
Canterbury	220	265	223	237	14	6%
Manawatu	75	102	71	80	9	13%
Other	100	87	79	87	8	10%
Total	1,605	1,908	1,620	1,908	288	18%

- TSV for the YTD 2017 have increased by 4% (+138) compared to the YTD 2016, which was driven by a 9% (+75) increase in FSV for the Universities sector.
- FSV for Italy have increased by 103% (+32), which was driven by increased secondary school FSV (+78%, +68).
- VSV for Europe are 5,708, an increase of 10% (+515) for 1 July 2017 when compared with the same day in 2016.

Europe: TSV approved in 2014-2017



Europe: FSVs approved in 2014-2017



In brief

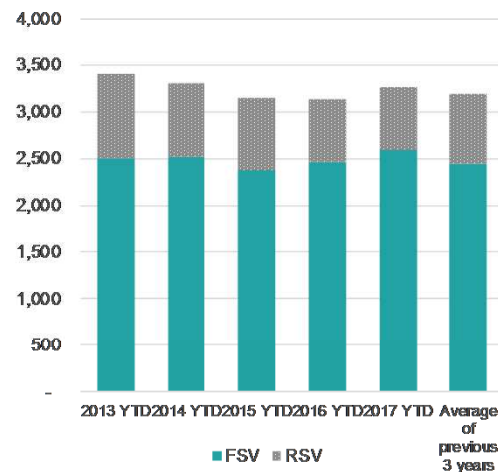
YTD	FSV	RSV	TSV
Visas	2,586	680	3,266
Change No.	132	6	138
Change Percent	5%	1%	4%

Changes are from the YTD 2016 to the YTD 2017

Europe: TSV by sector (*)

	2014 YTD	2015 YTD	2016 YTD	2017 YTD	Change Number	Change Percentage
Schools	1,201	1,012	1,070	1,113	43	4%
ITP	287	272	238	251	13	5%
PTE	566	586	586	616	30	5%
Universities	1,153	1,117	1,142	1,210	68	6%
Total	3,207	2,987	3,036	3,190	154	5%

Europe: Cumulative FSV and RSV



Europe: 2016 total visas

FSV	4,379
RSV	1,149
TSV	5,528

Europe: FSV by sector (*)

	2014 YTD	2015 YTD	2016 YTD	2017 YTD	Change Number	Change Percentage
Schools	1,042	866	944	986	42	4%
ITP	204	174	171	170	-1	-1%
PTE	419	413	430	462	32	7%
Universities	754	761	817	892	75	9%
Total	2,419	2,214	2,362	2,510	148	6%

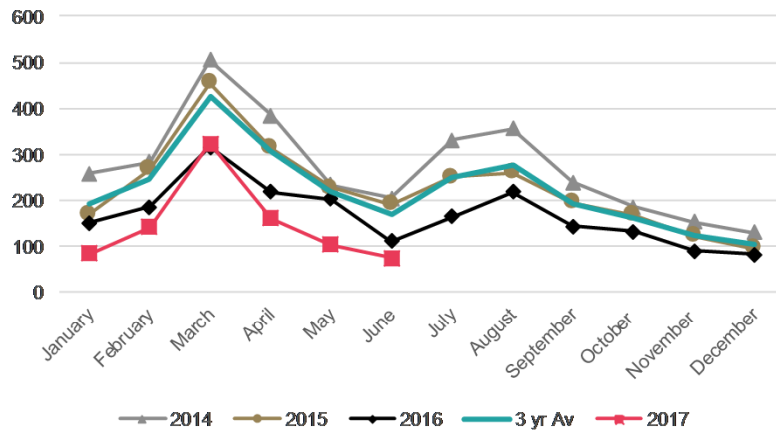
(*) Please note that numbers by sector may not always add up to the same as the total because sector is not always stated.

Europe: TSV by region

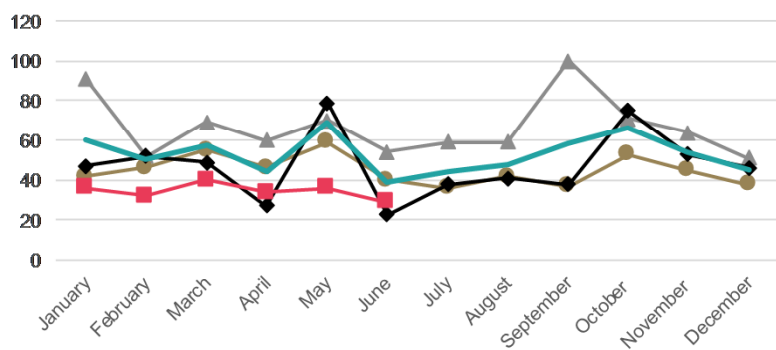
Region	2014 YTD	2015 YTD	2016 YTD	2017 YTD	Change Number	Change Percentage
Auckland	1,390	1,300	1,287	1,380	93	7%
Wellington	326	291	304	332	28	9%
Otago	278	264	298	304	6	2%
Canterbury	303	279	299	296	-3	-1%
Waikato	263	239	226	251	25	11%
Other	739	768	714	703	-11	-2%
Total	3,299	3,141	3,128	3,266	138	4%

- TSV for YTD 2017 have decreased by 34%(-459) compared to the YTD 2016 and reflects a TSV decline across all sectors.
- This decrease is almost entirely the result of changes in the Saudi Arabian market detailed on the following page.
- TSV and FSV are expected to decline throughout 2017.
- VSV for the Middle East are at 1,516, a 8%(-125) decrease for 1 July 2017 compared to the same day in 2016.

Middle East: TSV approved in 2014-2017



Middle East: FSVs approved in 2014-2017



In brief

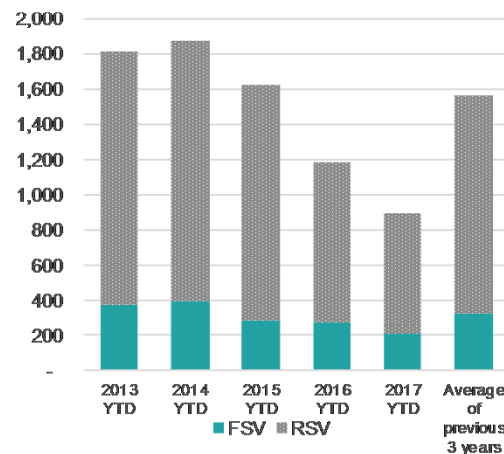
YTD	FSV	RSV	TSV
Visas	207	682	889
Change No.	- 70	- 224	- 294
Change Percent	-25%	-25%	-25%

Changes are from the YTD 2016 to the YTD 2017

Middle East: TSV by sector (*)

	2014 YTD	2015 YTD	2016 YTD	2017 YTD	Change Number	Change Percentage
Schools	73	87	67	51	-16	-24%
ITP	313	226	141	117	-24	-17%
PTE	516	469	299	141	-158	-53%
Universities	961	833	675	580	-95	-14%
Total	1,863	1,615	1,182	889	-293	-25%

Middle East: Cumulative FSV and RSV



Middle East: FSV by sector (*)

	2014 YTD	2015 YTD	2016 YTD	2017 YTD	Change Number	Change Percentage
Schools	23	22	11	13	2	18%
ITP	56	13	8	14	6	75%
PTE	142	145	156	96	-60	-38%
Universities	169	99	102	84	-18	-18%
Total	390	279	277	207	-70	-25%

(*) Please note that numbers by sector may not always add up to the same as the total because sector is not always stated.

Middle East: TSV by region

Region	2014 YTD	2015 YTD	2016 YTD	2017 YTD	Change Number	Change Percentage
Auckland	1,064	1,019	680	508	-172	-25%
Waikato	245	218	134	144	10	7%
Otago	172	115	90	76	-14	-16%
Canterbury	85	78	71	61	-10	-14%
Wellington	127	76	71	53	-18	-25%
Other	178	119	137	47	-90	-66%
Total	1,871	1,625	1,183	889	-294	-25%

Middle East: 2016 total visas

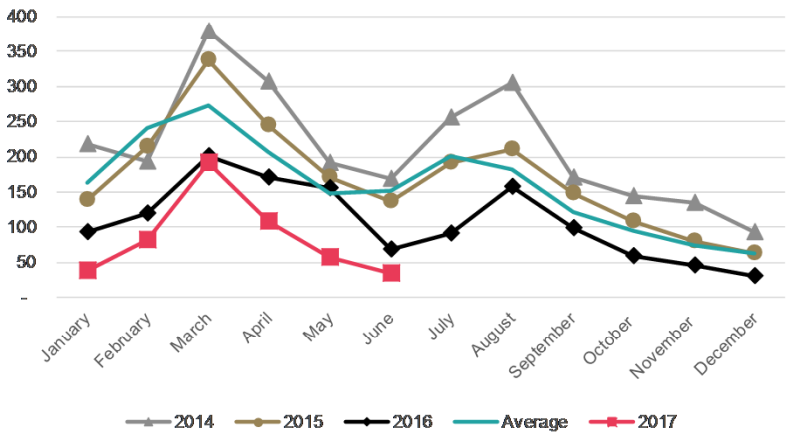
FSV	568
RSV	1,449
TSV	2,017

Saudi Arabia

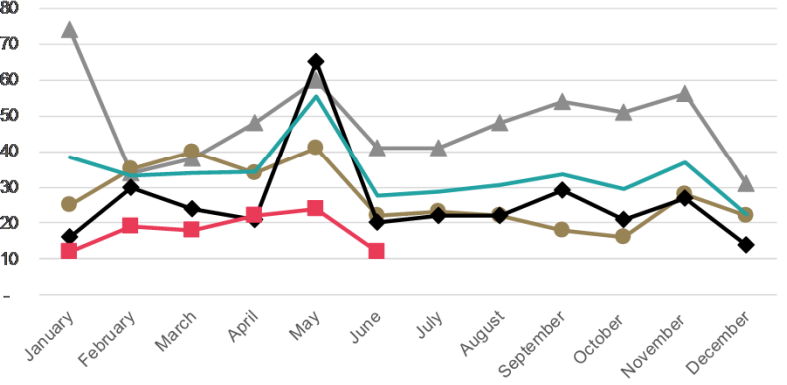
June 2017

- TSV for the YTD 2017 have decreased by 37% (-301) compared to the YTD 2016. This is due to restrictions to the Saudi Arabian government's scholarships programme, which enabled many Saudi Arabians to come to New Zealand for study.
- Both FSV and RSV in the YTD 2017 continue to decline by over a third (39% and 37% respectively) compared to YTD 2016. This decline is expected to continue into the rest of 2017.
- VSV were 728 on 1 July 2017, a 26% decrease (-253) compared to the same day in 2016.

Saudi Arabia: TSV approved in 2014-2017



Saudi Arabia: FSV approved in 2014-2017

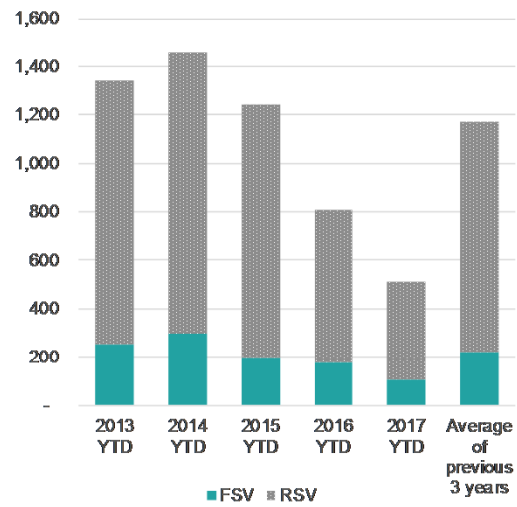


In brief

YTD	FSV	RSV	TSV
Visas	107	403	510
Change No.	- 69	- 232	- 301
Change Percent	-39%	-37%	-37%

Changes are from the YTD 2016 to the YTD 2017

Saudi Arabia: Cumulative FSV and RSV



Saudi Arabia: 2016 Total visas

FSV	311
RSV	981
TSV	1,292

Saudi Arabia: TSV by sector (*)

	2014 YTD	2015 YTD	2016 YTD	2017 YTD	Change Number	Change Percentage
Schools	64	86	64	48	-16	-25%
ITP	293	213	131	105	-26	-20%
PTE	486	441	279	110	-169	-61%
Universities	611	498	337	247	-90	-27%
Total	1,454	1,238	811	510	-301	-37%

Saudi Arabia: FSV by sector (*)

	2014 YTD	2015 YTD	2016 YTD	2017 YTD	Change Number	Change Percentage
Schools	21	22	10	11	1	10%
ITP	54	10	4	8	4	100%
PTE	131	131	144	74	-70	-49%
Universities	86	30	18	14	-4	-22%
Total	292	193	176	107	-69	-39%

(*) Please note that numbers by sector may not always add up to the same as the total because sector is not always stated.

Saudi Arabia: TSV by region

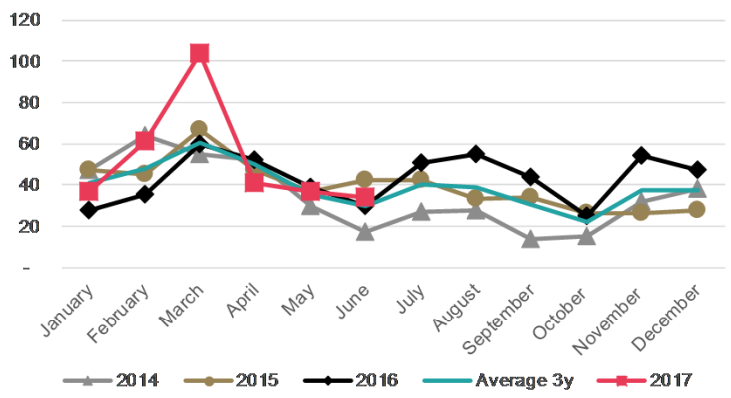
Region	2014 YTD	2015 YTD	2016 YTD	2017 YTD	Change Number	Change Percentage
Auckland	887	846	515	342	-173	-34%
Waikato	188	170	84	75	-9	-11%
Otago	124	68	48	35	-13	-27%
Manawatu	62	42	91	17	-74	-81%
Wellington	92	52	34	25	-9	-26%
Other	106	65	39	16	-23	-59%
Total	1,459	1,243	811	510	-301	-37%

Trends by sector

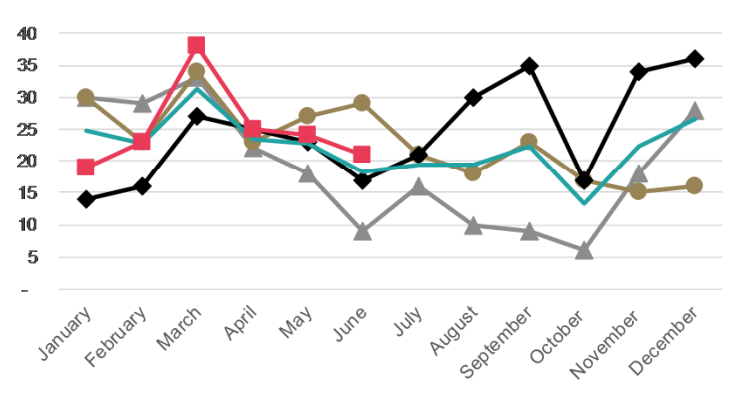


- TSV for the primary school sector have increased by 29% for the YTD 2017 compared to the YTD 2016. There were increases in TSV for China (+82% +51) and Korea (+45%, +38).
- VSV were 660 on 1 July 2017, a 41%(+191) increase on the same day in 2016.

Primary: TSV approved in 2013-2017



Primary: FSV approved in 2013-2017

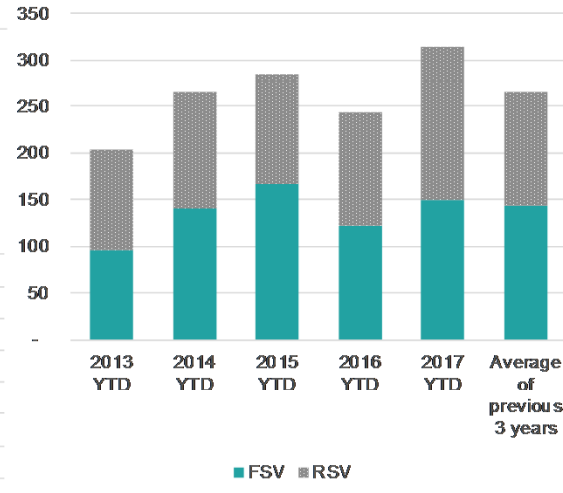


In Brief

YTD	FSV	RSV	TSV
Visas	150	164	314
Change No.	28	42	70
Change Percent	23%	34%	29%

Changes are from the YTD 2016 to the YTD 2017

Primary: Cumulative FSV and RSV



Primary: 2016 Total visas

FSV	295
RSV	225
TSV	520

Primary: TSV by country

	2014 YTD	2015 YTD	2016 YTD	2017 YTD	Chg No.	Chg %
Korea	118	120	85	123	38	45%
China	32	59	62	113	51	82%
Japan	43	34	35	22	-13	-37%
Thailand	14	8	10	7	-3	-30%
Saudi Arabia	6	11	12	5	-7	-58%
Other	52	53	40	44	4	10%
Total	265	285	244	314	70	29%

Primary: FSV by country

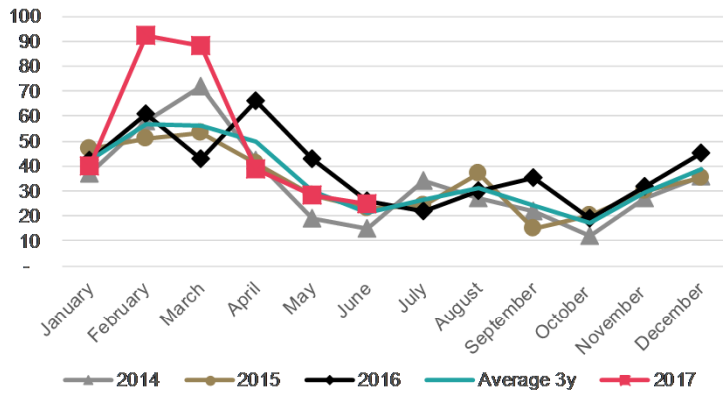
	2014 YTD	2015 YTD	2016 YTD	2017 YTD	Chg No.	Chg %
Korea	67	79	47	58	11	23%
China	22	33	34	60	26	76%
Japan	13	12	15	9	-6	-40%
Thailand	10	6	2	1	-1	-50%
Germany	6	1	4	1	-3	-75%
Other	23	35	20	21	1	5%
Total	141	166	122	150	28	23%

Primary: TSV by region

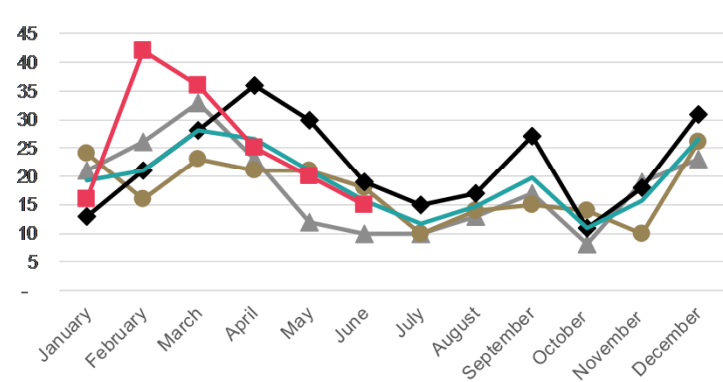
Region	2014 YTD	2015 YTD	2016 YTD	2017 YTD	Chg No.	Chg %
Auckland	126	142	121	136	15	12%
Bay of Plenty	37	47	41	67	26	63%
Canterbury	42	41	27	45	18	67%
Waikato	23	14	13	19	6	46%
Wellington	12	12	13	15	2	15%
Other	25	29	29	32	3	10%
Total	265	285	244	314	70	29%

- TSV for the intermediate school sector increased by 11% (+31) for the YTD 2017 compared to the YTD 2016. The main increase was for China (+54%, +37).
- FSV for China underpinned this growth (+47%, +17).
- VSV were 455 on 1 July 2017, a 5%(-23) increase on the same day in 2016.

Intermediate: TSV approved in 2013-2017



Intermediate: FSV approved in 2013-2017

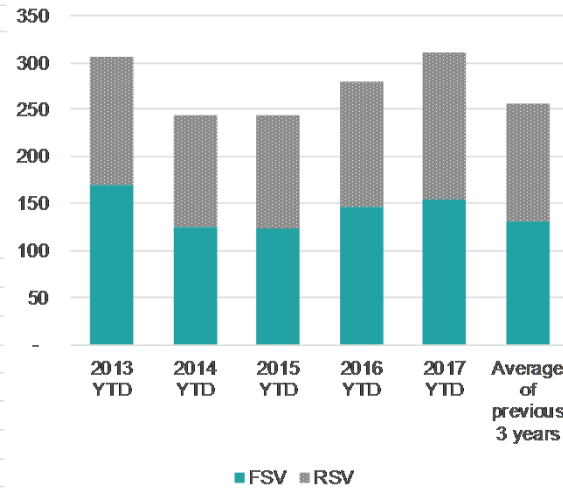


In Brief

YTD	FSV	RSV	TSV
Visas	154	158	312
Change No.	7	24	31
Change Percent	5%	18%	11%

Changes are from the YTD 2016 to the YTD 2017

Intermediate: Cumulative FSV and RSV



Intermediate: 2016 Total visas

FSV	266
RSV	198
TSV	464

Intermediate: TSV by country

	2014 YTD	2015 YTD	2016 YTD	2017 YTD	Chg No.	Chg %
Korea	166	153	145	127	-18	-12%
China	40	48	69	106	37	54%
Japan	9	9	12	13	1	8%
Thailand	6	8	12	14	2	17%
Taiwan	4	1	12	11	-1	-8%
Other	18	24	31	41	10	32%
Total	243	243	281	312	31	11%

Intermediate: FSV by country

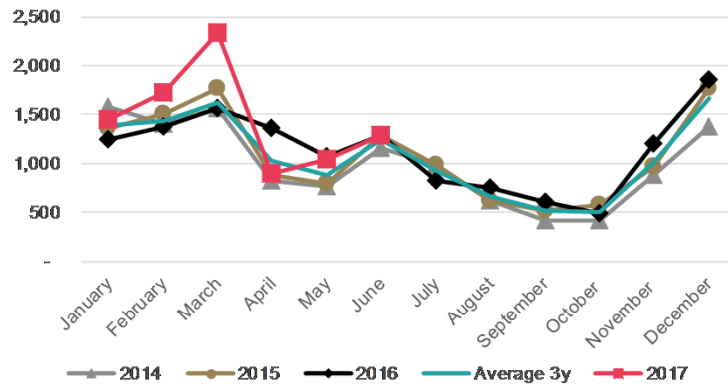
	2014 YTD	2015 YTD	2016 YTD	2017 YTD	Chg No.	Chg %
Korea	84	81	79	67	-12	-15%
China	24	24	36	53	17	47%
Japan	2	2	6	5	-1	-17%
Thailand	4	2	3	6	3	100%
Taiwan	2	-	5	1	-4	-80%
Other	9	14	18	22	4	22%
Total	125	123	147	154	7	5%

Intermediate: TSV by region

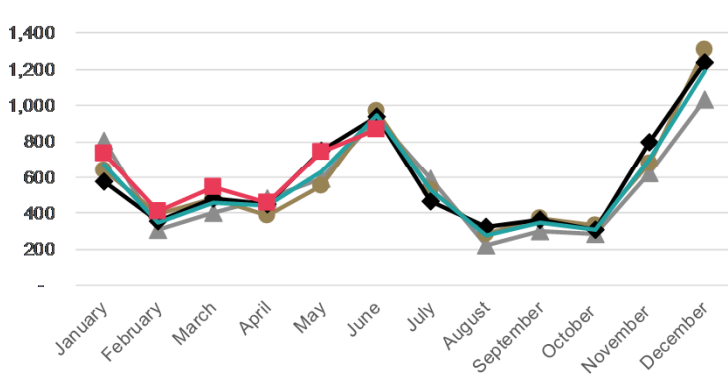
Region	2014 YTD	2015 YTD	2016 YTD	2017 YTD	Chg No.	Chg %
Auckland	174	173	190	210	20	11%
Bay of Plenty	29	33	56	56	0	0%
Canterbury	18	13	9	16	7	78%
Waikato	8	6	8	10	2	25%
Hawke's Bay	3	4	5	4	-1	-20%
Other	11	14	13	16	3	23%
Total	243	243	281	312	31	11%

- TSV have increased 10%(+828) for the YTD 2017, with both FSV (+6%, +205) and RSV (+14%, +623) increasing compared to the YTD 2016.
- FSV increased for Chile (+131%,+72), Brazil (+25%, +53), and Italy (+103%, +79).
- VSV for secondary school students were 13,319 on 1 July 2017, which was a 10% (+1,163) increase as on the same day last year.

Secondary: TSV approved in 2013-2017



Secondary: FSV approved in 2013-2017

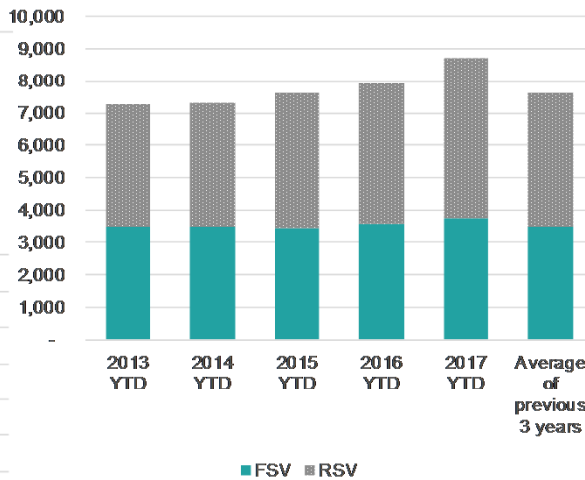


In Brief

YTD	FSV	RSV	TSV
Visas	3,755	4,983	8,738
Change No.	205	623	828
Change Percent	6%	14%	10%

Changes are from the YTD 2016 to the YTD 2017

Secondary: Cumulative FSV and RSV



Secondary: 2016 Total visas

FSV	7,049
RSV	6,591
TSV	13,640

Secondary: TSV by country

	2014 YTD	2015 YTD	2016 YTD	2017 YTD	Chg No.	Chg %
China	2,095	2,575	3,018	3,514	496	16%
Korea	1,003	949	904	972	68	8%
Japan	745	748	761	768	7	1%
Germany	782	662	723	645	-78	-11%
Thailand	665	771	641	652	11	2%
Other	2,009	1,898	1,863	2,187	324	17%
Total	7,299	7,603	7,910	8,738	828	10%

Secondary: FSV by country

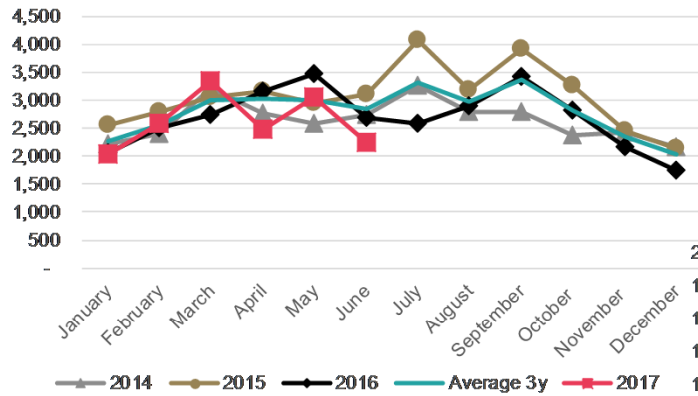
	2014 YTD	2015 YTD	2016 YTD	2017 YTD	Chg No.	Chg %
China	792	949	999	1,000	1	0%
Germany	710	600	671	592	-79	-12%
Japan	284	301	338	351	13	4%
Korea	231	223	281	280	-1	0%
Brazil	348	247	214	267	53	25%
Other	1,136	1,111	1,047	1,265	218	21%
Total	3,501	3,431	3,550	3,755	205	6%

Secondary: TSV by region

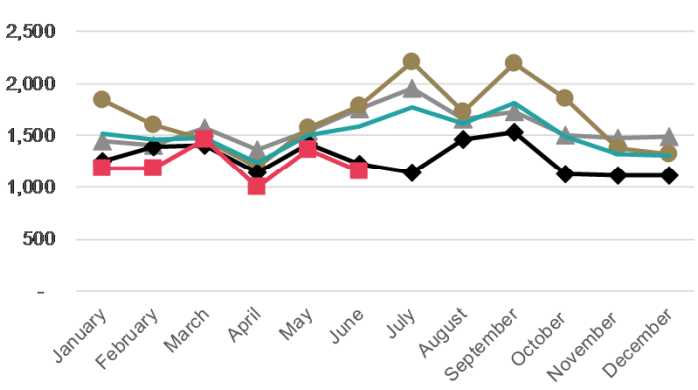
Region	2014 YTD	2015 YTD	2016 YTD	2017 YTD	Chg No.	Chg %
Auckland	4,029	4,380	4,618	5,031	413	9%
Canterbury	634	634	698	758	60	9%
Wellington	515	467	486	612	126	26%
Bay of Plenty	421	447	484	524	40	8%
Waikato	361	341	373	438	65	17%
Other	1,339	1,334	1,251	1,375	124	10%
Total	7,299	7,603	7,910	8,738	828	10%

- TSV and FSV for the PTE sector have decreased by 5% (-822) and 6% (-489) respectively for the YTD 2017.
- The largest FSV decrease came from India (-44%, -894), while FSV increased for China (+6%, +185), Brazil (+21%, +117), Chile (+45%, +77), Colombia (+35%, +118) and Sri Lanka (+67%, +50).
- VSV for PTE students were 22,351 on 1 July 2017, which was a 16% (-4,313) decrease on the same date last year.

PTE: TSV approved in 2013-2017



PTE: FSV approved in 2013-2017

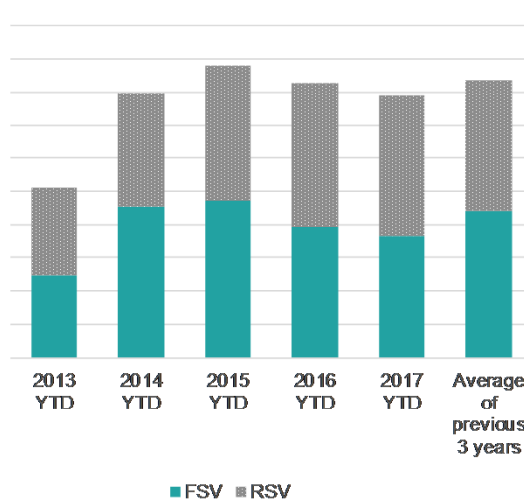


In Brief

YTD	FSV	RSV	TSV
Visas	7,343	8,402	15,745
Change No.	- 489	- 333	- 822
Change Percent	-6%	-4%	-5%

Changes are from the YTD 2016 to the YTD 2017

PTE: Cumulative FSV and RSV



PTE: 2016 Total visas

FSV	15,316
RSV	16,909
TSV	32,225

PTE: TSV by country

	2014 YTD	2015 YTD	2016 YTD	2017 YTD	Chg No.	Chg %
India	6,378	6,731	5,333	4,040	-1293	-24%
China	3,340	3,979	4,396	4,516	120	3%
Korea	992	1,015	1,067	906	-161	-15%
Brazil	327	594	682	845	163	24%
Japan	614	636	660	593	-67	-10%
Other	4,247	4,672	4,429	4,845	416	9%
Total	15,898	17,627	16,567	15,745	-822	-5%

PTE: FSV by country

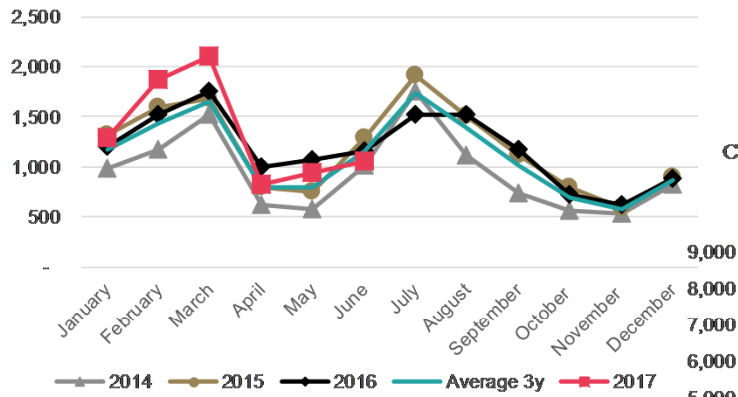
	2014 YTD	2015 YTD	2016 YTD	2017 YTD	Chg No.	Chg %
India	4,307	3,750	2,017	1,123	-894	-44%
China	959	1,221	1,366	1,451	85	6%
Korea	565	562	620	522	-98	-16%
Brazil	279	507	565	682	117	21%
Philippines	399	801	433	463	30	7%
Other	2,594	2,622	2,831	3,102	271	10%
Total	9,103	9,463	7,832	7,343	-489	-6%

PTE: TSV by region

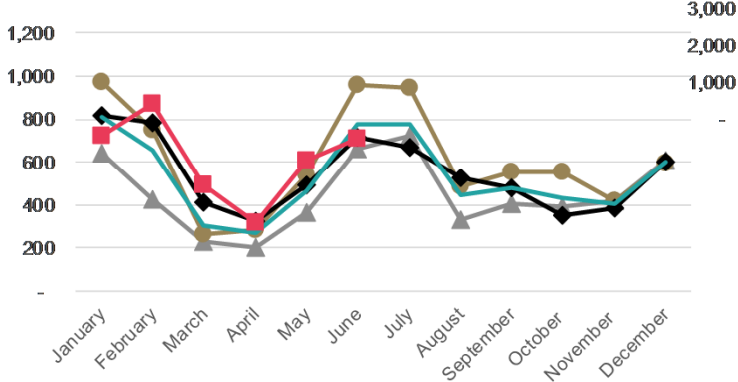
Region	2014 YTD	2015 YTD	2016 YTD	2017 YTD	Chg No.	Chg %
Auckland	12,602	14,099	13,241	12,400	-841	-6%
Canterbury	1,302	1,458	1,281	1,321	40	3%
Bay of Plenty	550	557	516	416	-100	-19%
Manawatu	358	326	365	287	-78	-21%
Wellington	299	316	309	373	64	21%
Other	787	871	855	948	93	11%
Total	15,898	17,627	16,567	15,745	-822	-5%

- The ITP sector shows a 5% (+389) increase in TSV for the YTD 2017. Both RSV (5%, +217) and FSV (+5%, +172) increased compared to the YTD 2016. The increase in FSV comes from India (+6%, +117) and China (+8%, +53).
- VSV were 12,557 on 1 July 2017, which was a 3% (+380) increase compared to 1 July 2016.

ITP: TSV approved in 2013-2017



ITP: FSV approved in 2013-2017

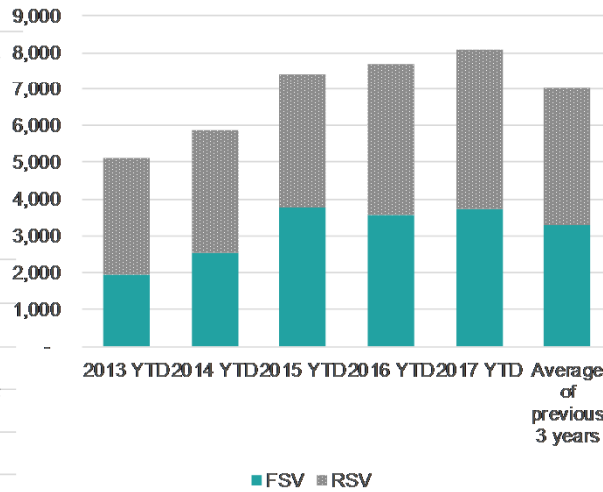


In Brief

YTD	FSV	RSV	TSV
Visas	3,724	4,371	8,095
Change No.	172	217	389
Change Percent	5%	5%	5%

Changes are from the YTD 2016 to the YTD 2017

ITP: Cumulative FSV and RSV



ITP: 2016 Total visas

FSV	6,561
RSV	7,597
TSV	14,158

ITP: TSV by country

	2014 YTD	2015 YTD	2016 YTD	2017 YTD	Chg No.	Chg %
India	1,608	2,763	2,911	3,058	147	5%
China	2,317	2,626	2,740	2,952	212	8%
Korea	143	145	168	199	31	18%
Philippines	98	158	153	178	25	16%
Saudi Arabia	293	213	131	105	-26	-20%
Other	1,416	1,511	1,603	1,603	0	0%
Total	5,875	7,416	7,706	8,095	389	5%

ITP: FSV by country

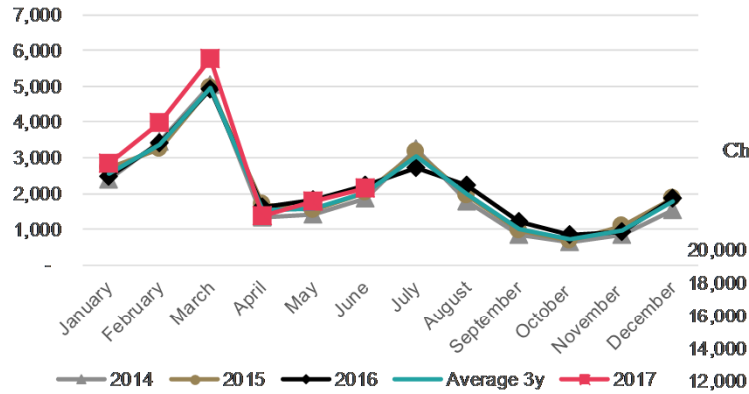
	2014 YTD	2015 YTD	2016 YTD	2017 YTD	Chg No.	Chg %
India	1,102	2,138	1,826	1,943	117	6%
China	560	650	681	734	53	8%
Philippines	63	128	120	139	19	16%
Sri Lanka	38	76	85	127	42	49%
Germany	106	81	80	60	-20	-25%
Other	657	701	760	721	-39	-5%
Total	2,526	3,774	3,552	3,724	172	5%

ITP: TSV by region

Region	2014 YTD	2015 YTD	2016 YTD	2017 YTD	Chg No.	Chg %
Auckland	2,606	3,422	3,170	3,746	576	18%
Waikato	638	768	816	805	-11	-1%
Canterbury	527	637	673	594	-79	-12%
Wellington	426	571	714	740	26	4%
Bay of Plenty	570	620	649	560	-89	-14%
Other	1,108	1,398	1,684	1,650	-34	-2%
Total	5,875	7,416	7,706	8,095	389	5%

- The Universities sector shows a 9%(+ 1,453) increase in TSV for the YTD 2017. FSV in the Universities sector have grown by 15% (+879) compared to the YTD 2016. This growth comes from increased FSV for India (+36%, +277), China (+8%, +565) and the USA (+19%, +283).
- All regions with universities had increases, especially the Auckland (+10%, +819), Otago (+8%, +156), Waikato (+9%, +104) and Canterbury (+12%, +232) regions.
- VSV for the Universities sector were 25,125 on 1 July 2017, which was a 12% (+2,706) increase on the same date last year compared to 1 July 2016.

Universities: TSV approved in 2013-2017



In Brief

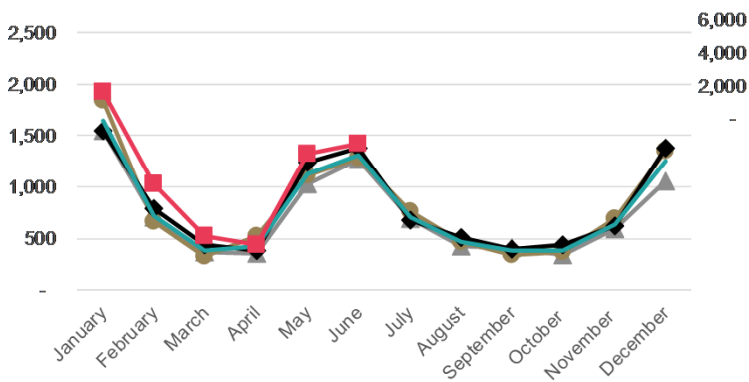
YTD	FSV	RSV	TSV
Visas	6,653	11,185	17,838
Change No.	879	574	1,453
Change Percent	15%	5%	9%

Changes are from the YTD 2016 to the YTD 2017

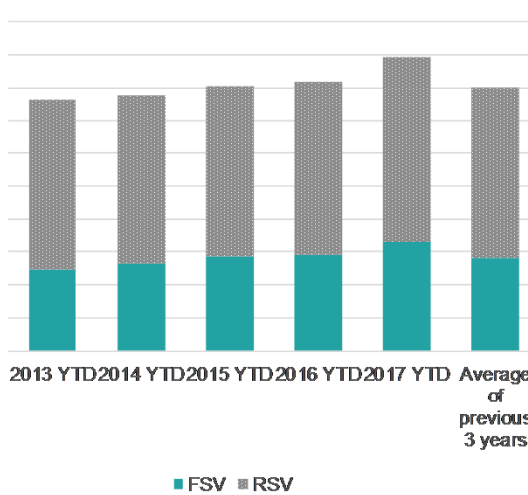
Universities: TSV by country

	2014 YTD	2015 YTD	2016 YTD	2017 YTD	Chg No.	Chg %
China	6,249	6,921	7,498	8,063	565	8%
USA	1,479	1,754	1,500	1,783	283	19%
India	651	683	778	1,055	277	36%
Malaysia	790	800	804	802	-2	0%
Korea	639	521	478	438	-40	-8%
Other	5,683	5,430	5,327	5,697	370	7%
Total	15,491	16,109	16,385	17,838	1453	9%

Universities: FSV approved in 2013-2017



Universities: Cumulative FSV and RSV



Universities: FSV by country

	2014 YTD	2015 YTD	2016 YTD	2017 YTD	Chg No.	Chg %
USA	1,292	1,599	1,331	1,605	274	21%
China	1,156	1,290	1,322	1,319	-3	0%
India	370	390	484	667	183	38%
Malaysia	168	256	332	326	-6	-2%
Japan	147	166	195	235	40	21%
Other	2,141	2,050	2,110	2,501	391	19%
Total	5,274	5,751	5,774	6,653	879	15%

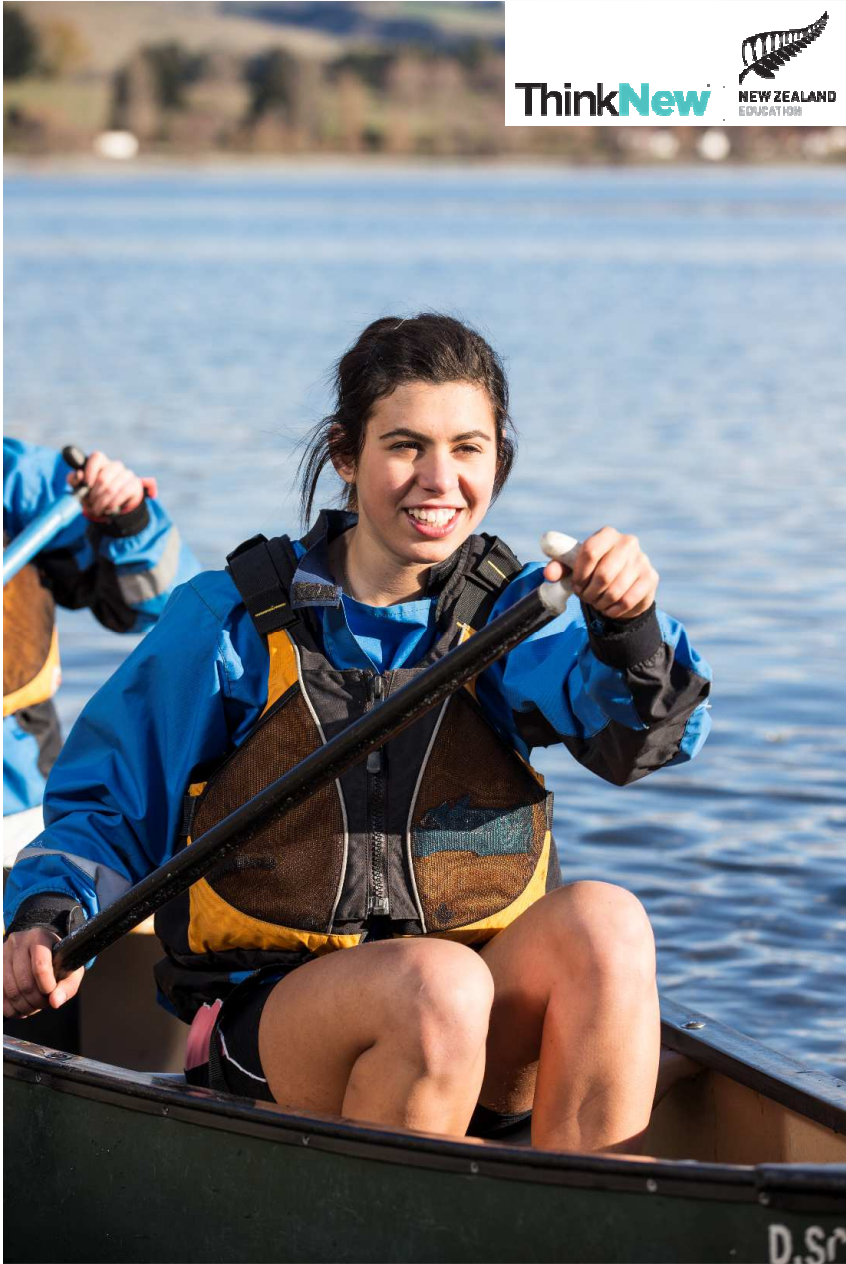
Universities: TSV by region

Region	2014 YTD	2015 YTD	2016 YTD	2017 YTD	Chg No.	Chg %
Auckland	7,814	8,323	8,510	9,329	819	10%
Otago	1,980	2,020	1,898	2,054	156	8%
Wellington	1,872	1,939	2,017	2,083	66	3%
Canterbury	1,634	1,708	1,957	2,189	232	12%
Waikato	1,315	1,226	1,194	1,298	104	9%
Other	876	893	809	885	76	9%
Total	15,491	16,109	16,385	17,838	1453	9%

Universities: 2016 Total visas

FSV	9,775
RSV	16,366
TSV	26,141

Trends by region



A note about regional data

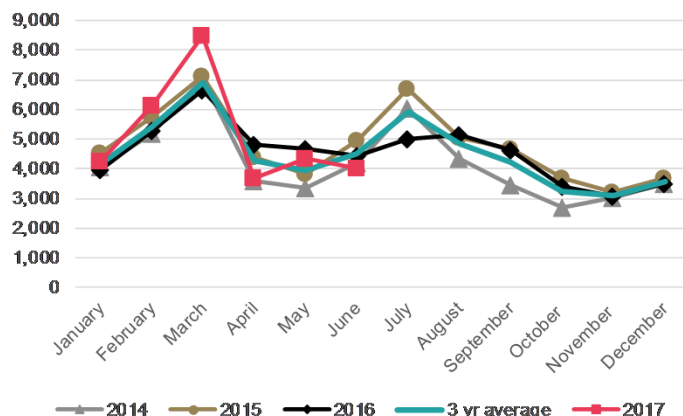
Due to data improvement processes within Immigration New Zealand, there have been some changes to region-based data for visas.

Numbers in these slides may have changed from slides previously produced.

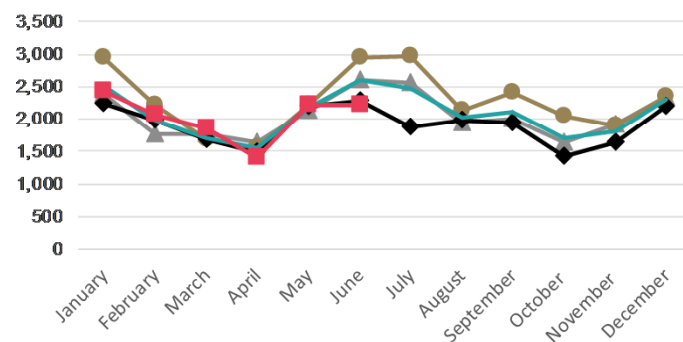
This data should be treated with caution, therefore the number and percentage changes should be considered approximates.

- Auckland has increased in TSV by 3% (+1,008) in the YTD 2017 compared to the YTD 2016 with continued growth in the Universities (+10%, +819) and ITP (+18%, +576) sectors.
- FSV increased for all sectors, excluding the PTE sector which declined (-8%, -486).
- VSV for Auckland was stable on 1 July 2017, decreasing by 2% (-839) to reach 44,449, a reflection of a decrease in the Indian market in the region.

Auckland: TSV approved in 2014-2017



Auckland: FSV approved in 2014-2017

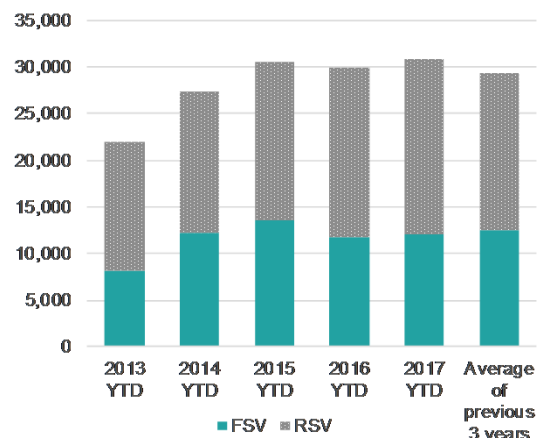


In brief

YTD	FSV	RSV	TSV
Visas	12,141	18,725	30,866
Change No.	283	725	1,008
Change Percent	2%	4%	3%

Changes are from the YTD 2016 to the YTD 2017

Auckland: Cumulative FSV and RSV



Auckland: 2016 total visas

FSV	22,892
RSV	31,689
TSV	54,581

Auckland: TSV by sector (*)

	2014 YTD	2015 YTD	2016 YTD	2017 YTD	Change Number	Change Percentage
Schools	4,329	4,695	4,929	5,377	448	9%
ITP	2,606	3,422	3,170	3,746	576	18%
PTE	12,602	14,099	13,241	12,400	-841	-6%
Universities	7,814	8,323	8,510	9,329	819	10%
Total	27,351	30,539	29,850	30,852	1002	3%

Auckland: FSV by sector (*)

	2014 YTD	2015 YTD	2016 YTD	2017 YTD	Change Number	Change Percentage
Schools	1,863	1,960	1,980	2,045	65	3%
ITP	986	1,690	1,410	1,712	302	21%
PTE	7,088	7,480	5,998	5,512	-486	-8%
Universities	2,293	2,411	2,464	2,866	402	16%
Total	12,230	13,541	11,852	12,135	283	2%

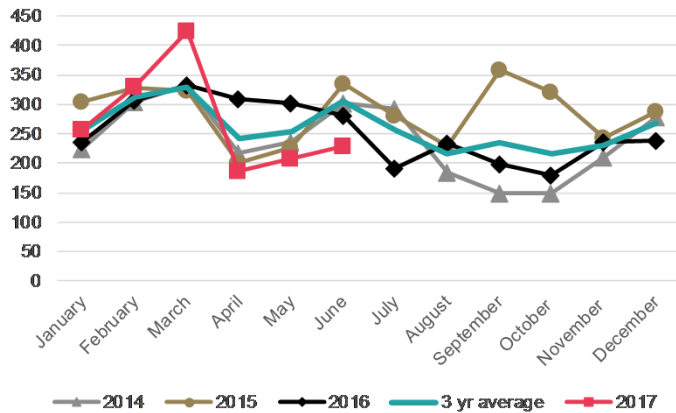
(*) Please note that numbers by sector may not always add up to the same as the total because sector is not always stated.

Auckland: TSV by market

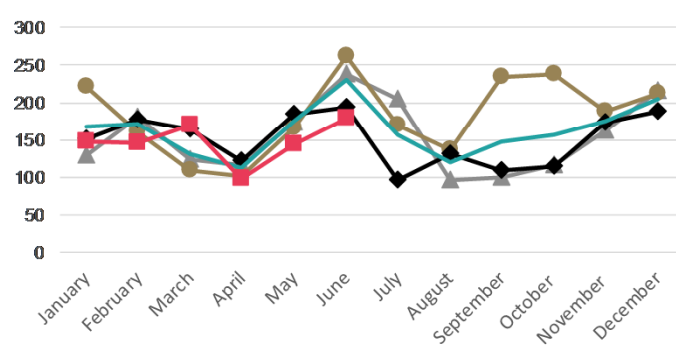
Country	2014 YTD	2015 YTD	2016 YTD	2017 YTD	Change Number	Change Percentage
China	9,396	10,915	11,931	12,921	990	8%
India	6,107	7,187	6,016	5,434	-582	-10%
Korea	2,164	2,064	1,995	1,827	-168	-8%
Japan	860	866	906	827	-79	-9%
Thailand	766	759	722	848	126	17%
Other	8,094	8,758	8,288	9,009	721	9%
Total	27,387	30,549	29,858	30,866	1008	3%

- TSV for the Bay of Plenty for the YTD 2017 are declining (-7%, -131) compared to the YTD 2016.
- TSV for all sectors declined, excluding schools, which increased 11% (+66).
- The India market declined (-29%, -227), especially in the PTE (-37%, -19) sectors, while students from Korea have increased (+21%, +56).
- VSV for 1 July 2017 were 2,718 and have declined by 10% (-317) since 1 July 2016, driven by a decline in the Indian market.

Bay of Plenty: TSV approved in 2014-2017



Bay of Plenty: FSV approved in 2014-2017

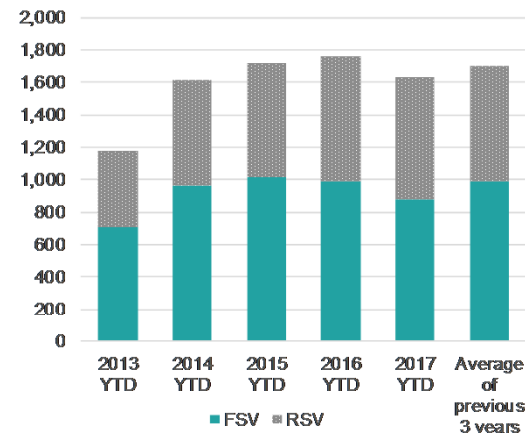


In brief

YTD	FSV	RSV	TSV
Visas	881	754	1,635
Change No.	- 112	- 19	- 131
Change Percent	-11%	-2%	-7%

Changes are from the YTD 2016 to the YTD 2017

Bay of Plenty: Cumulative FSV and RSV



Bay of Plenty: 2016 total visas

FSV	1,806
RSV	1,240
TSV	3,046

Bay of Plenty: TSV by sector (*)

	2014 YTD	2015 YTD	2016 YTD	2017 YTD	Change Number	Change Percentage
Schools	487	527	581	647	66	11%
ITP	570	620	649	560	-89	-14%
PTE	550	557	516	416	-100	-19%
Universities	8	9	19	11	-8	-42%
Total	1,615	1,713	1,765	1,634	-131	-7%

Bay of Plenty: FSV by sector (*)

	2014 YTD	2015 YTD	2016 YTD	2017 YTD	Change Number	Change Percentage
Schools	282	302	340	340	0	0%
ITP	345	398	394	351	-43	-11%
PTE	332	312	243	184	-59	-24%
Universities	2	5	16	5	-11	-69%
Total	961	1,017	993	880	-113	-11%

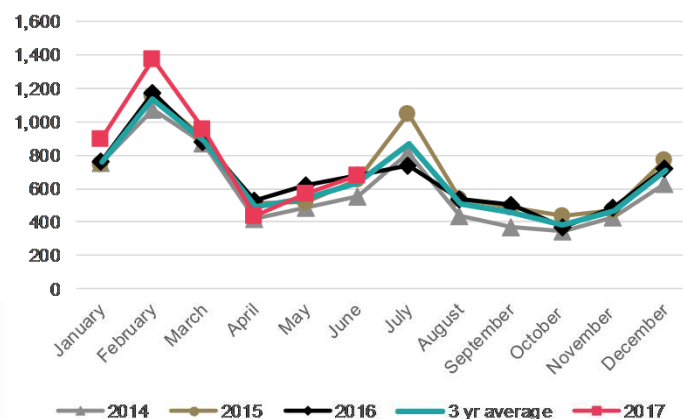
(*) Please note that numbers by sector may not always add up to the same as the total because sector is not always stated.

Bay of Plenty: TSV by market

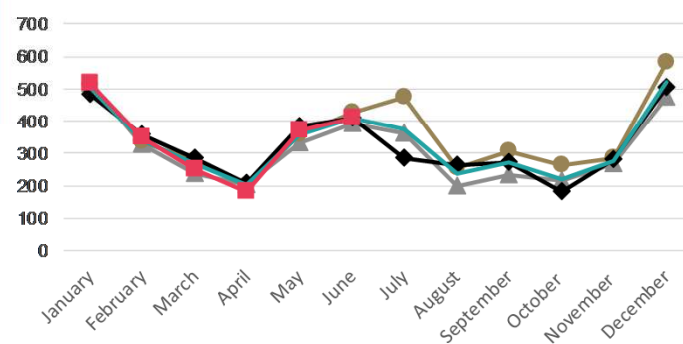
Country	2014 YTD	2015 YTD	2016 YTD	2017 YTD	Change Number	Change Percentage
India	694	777	791	564	-227	-29%
Korea	201	216	269	325	56	21%
Germany	103	102	111	105	-6	-5%
China	96	86	116	128	12	10%
Philippines	42	116	92	85	-7	-8%
Other	480	418	387	428	41	11%
Total	1,616	1,715	1,766	1,635	-131	-7%

- There has been a 6% increase in TSV in the 2017 YTD compared to the YTD 2016. All sectors have increased in TSV except for the ITP sector, which continues to decline (-11%, -62).
- Growth in FSV for the Universities (+7%, 52) and Schools (+16%, +54) sectors were balanced by decreased FSV for ITP (-25%, -71) and PTE (-11%, -77) sectors.
- The number of VSV for Canterbury on 1 July 2017 was 7,277, which is stable compared to 1 July 2016 (+4%, +258).

Canterbury: TSV approved in 2014-2017



Canterbury: FSV approved in 2014-2017

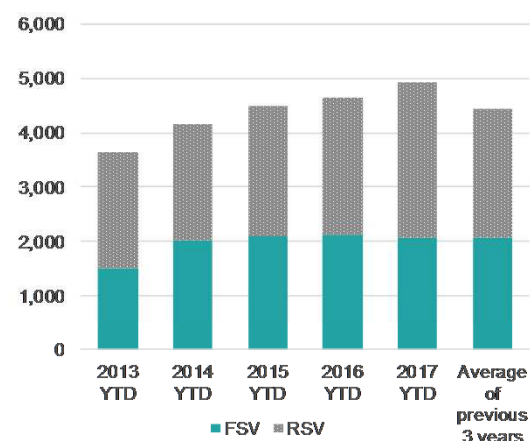


In brief

YTD	FSV	RSV	TSV
Visas	2,076	2,849	4,925
Change No.	- 42	320	278
Change Percent	-2%	13%	6%

Changes are from the YTD 2016 to the YTD 2017

Canterbury: Cumulative FSV and RSV



Canterbury: 2016 total visas

FSV	3,900
RSV	4,113
TSV	8,013

Canterbury: TSV by sector (*)

	2014 YTD	2015 YTD	2016 YTD	2017 YTD	Change Number	Change Percentage
Schools	694	688	734	819	85	12%
ITP	527	637	673	594	-79	-12%
PTE	1,302	1,458	1,281	1,321	40	3%
Universities	1,634	1,708	1,957	2,189	232	12%
Total	4,157	4,491	4,645	4,923	278	6%

Canterbury: FSV by sector (*)

	2014 YTD	2015 YTD	2016 YTD	2017 YTD	Change Number	Change Percentage
Schools	336	327	332	386	54	16%
ITP	229	301	287	216	-71	-25%
PTE	834	773	710	633	-77	-11%
Universities	604	695	789	841	52	7%
Total	2,003	2,096	2,118	2,076	-42	-2%

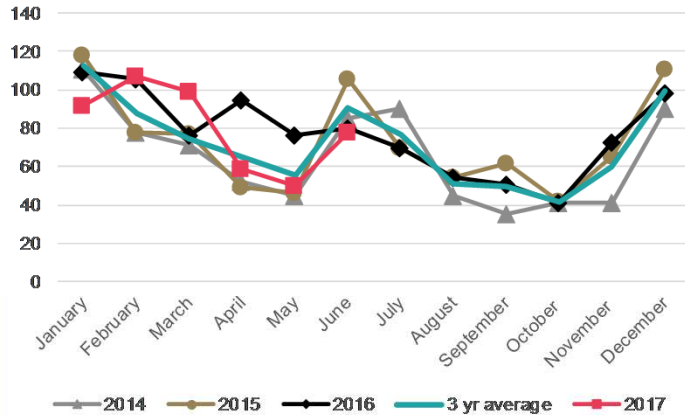
(*) Please note that numbers by sector may not always add up to the same as the total because sector is not always stated.

Canterbury: TSV by market

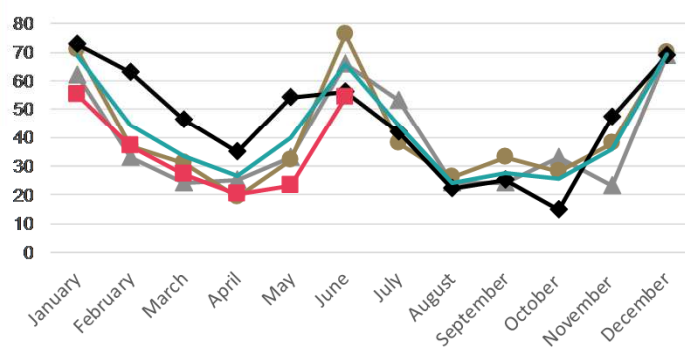
Country	2014 YTD	2015 YTD	2016 YTD	2017 YTD	Change Number	Change Percentage
China	1,213	1,516	1,648	1,884	236	14%
India	794	828	806	714	-92	-11%
Japan	283	307	332	343	11	3%
USA	220	265	223	237	14	6%
Korea	232	203	156	159	3	2%
Other	1,424	1,378	1,482	1,588	106	7%
Total	4,166	4,497	4,647	4,925	278	6%

- There has been a 11% (-57) decrease in TSV for the YTD 2017 compared to the YTD 2016, a result of a decrease in the PTE sector (-39%, -67).
- FSV have also declined (-34%, -111), underpinned by decreases in the Schools (-28%, -32) and PTE (-72%, -77) sectors.
- The number of VSV for 1 July 2017 is 752 which is a 6% decrease (-48) since the same day in 2016.

Hawke's Bay: TSV approved in 2014-2017



Hawke's Bay: FSV approved in 2014-2017

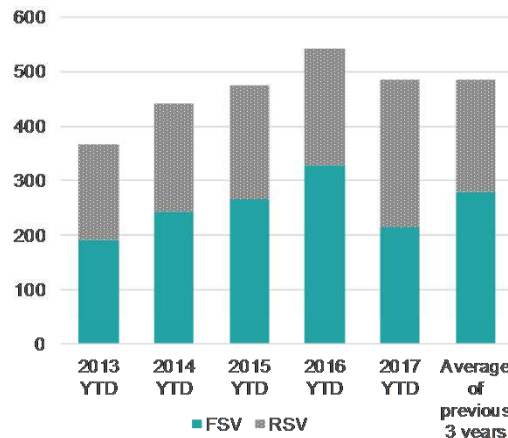


In brief

YTD	FSV	RSV	TSV
Visas	216	269	485
Change No.	- 111	54	- 57
Change Percent	-34%	25%	-11%

Changes are from the YTD 2016 to the YTD 2017

Hawke's Bay: Cumulative FSV and RSV



Hawke's Bay: 2016 total visas

FSV	547
RSV	382
TSV	929

Hawke's Bay: TSV by sector (*)

	2014 YTD	2015 YTD	2016 YTD	2017 YTD	Change Number	Change Percentage
Schools	193	174	188	183	-5	-3%
ITP	146	158	180	195	15	8%
PTE	103	142	174	107	-67	-39%
Universities	-	-	-	-	0	
Total	442	474	542	485	-57	-11%

Hawke's Bay: FSV by sector (*)

	2014 YTD	2015 YTD	2016 YTD	2017 YTD	Change Number	Change Percentage
Schools	100	93	114	82	-32	-28%
ITP	80	93	106	104	-2	-2%
PTE	63	80	107	30	-77	-72%
Universities	-	-	-	-	0	
Total	243	266	327	216	-111	-34%

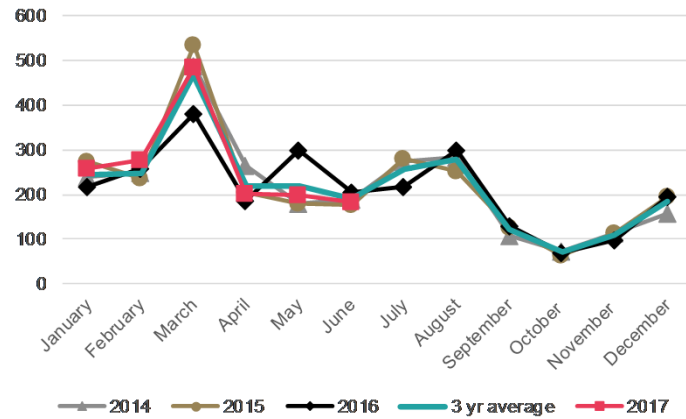
(*) Please note that numbers by sector may not always add up to the same as the total because sector is not always stated.

Hawke's Bay: TSV by market

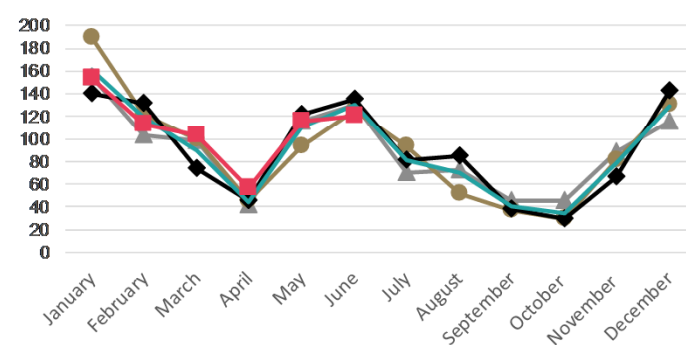
Country	2014 YTD	2015 YTD	2016 YTD	2017 YTD	Change Number	Change Percentage
India	98	156	152	147	-5	-3%
China	71	63	83	88	5	6%
Germany	60	52	53	52	-1	-2%
Japan	49	45	63	46	-17	-27%
Thailand	25	25	21	23	2	10%
Other	139	133	170	129	-41	-24%
Total	442	474	542	485	-57	-11%

- TSV have increased by 4% (+56) in the YTD 2017 compared to the YTD 2016.
- FSV for the ITP and PTE sectors continue to decline, rebalanced by the increase in Universities FSV (+20%, +58).
- There were 2,484 VSV for this region on 1 July 2017, which is an increase of 6% (+146) since the same day in 2016.

Manawatu: TSV approved in 2014-2017



Manawatu: FSV approved in 2014-2017

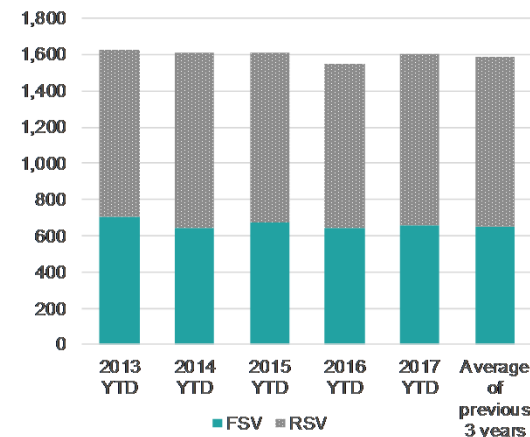


In brief

YTD	FSV	RSV	TSV
Visas	662	939	1,601
Change No.	14	42	56
Change Percent	2%	5%	4%

Changes are from the YTD 2016 to the YTD 2017

Manawatu: Cumulative FSV and RSV



Manawatu: 2016 total visas

FSV	1,090
RSV	1,463
TSV	2,553

Manawatu: TSV by sector (*)

	2014 YTD	2015 YTD	2016 YTD	2017 YTD	Change Number	Change Percentage
Schools	283	308	266	308	42	16%
ITP	119	108	130	132	2	2%
PTE	358	326	365	287	-78	-21%
Universities	846	863	784	874	90	11%
Total	1,606	1,605	1,545	1,601	56	4%

Manawatu: FSV by sector (*)

	2014 YTD	2015 YTD	2016 YTD	2017 YTD	Change Number	Change Percentage
Schools	139	157	122	126	4	3%
ITP	40	62	72	51	-21	-29%
PTE	202	157	164	137	-27	-16%
Universities	263	298	290	348	58	20%
Total	644	674	648	662	14	2%

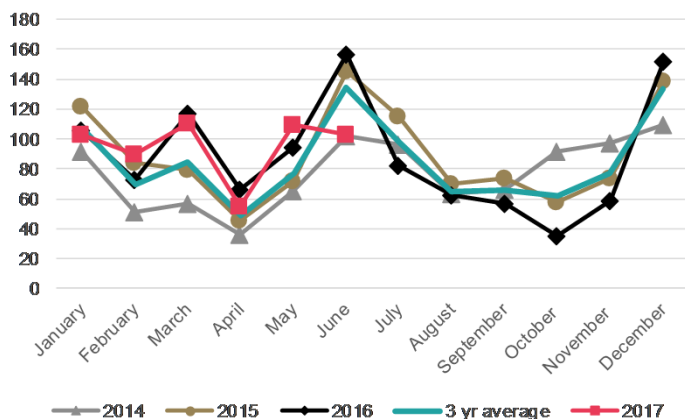
(*) Please note that numbers by sector may not always add up to the same as the total because sector is not always stated.

Manawatu: TSV by market

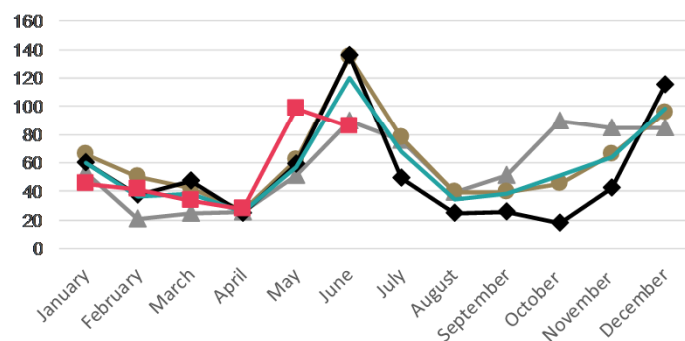
Country	2014 YTD	2015 YTD	2016 YTD	2017 YTD	Change Number	Change Percentage
China	433	438	428	481	53	12%
Japan	228	204	181	198	17	9%
India	126	144	134	151	17	13%
USA	75	102	71	80	9	13%
Thailand	104	135	64	50	-14	-22%
Other	640	583	667	641	-26	-4%
Total	1,606	1,606	1,545	1,601	56	4%

- TSV have decreased slightly (-7%, -43) for the YTD 2017 compared to the YTD 2016.
- The decrease in TSV for India (+46%, -66) has been offset by the ongoing increase in TSV for China (+37%, +37).
- VSV for this region as on 1 July 2017 were 951, which is a decrease of 3% (-30) since the same day in 2016.

Nelson: TSV approved in 2014-2017



Nelson: FSV approved in 2014-2017

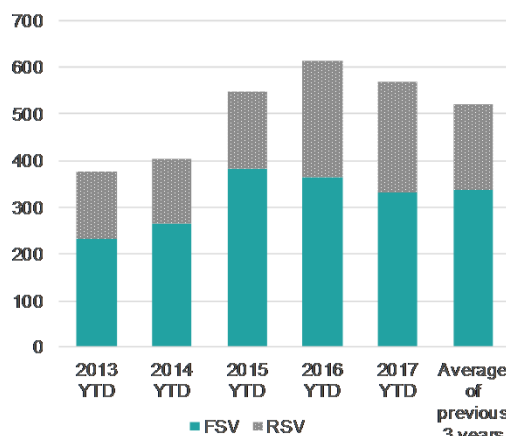


In brief

YTD	FSV	RSV	TSV
Visas	331	239	570
Change No.	- 33	- 10	- 43
Change Percent	-9%	-4%	-7%

Changes are from the YTD 2016 to the YTD 2017

Nelson: Cumulative FSV and RSV



Nelson: 2016 total visas

FSV	639
RSV	421
TSV	1,060

Nelson: TSV by sector (*)

	2014 YTD	2015 YTD	2016 YTD	2017 YTD	Change Number	Change Percentage
Schools	222	255	250	249	-1	0%
ITP	124	246	332	267	-65	-20%
PTE	51	34	31	54	23	74%
Universities	4	12	-	-	0	
Total	401	547	613	570	-43	-7%

Nelson: FSV by sector (*)

	2014 YTD	2015 YTD	2016 YTD	2017 YTD	Change Number	Change Percentage
Schools	156	166	166	154	-12	-7%
ITP	84	191	176	140	-36	-20%
PTE	24	25	22	37	15	68%
Universities	-	-	-	-	0	
Total	264	382	364	331	-33	-9%

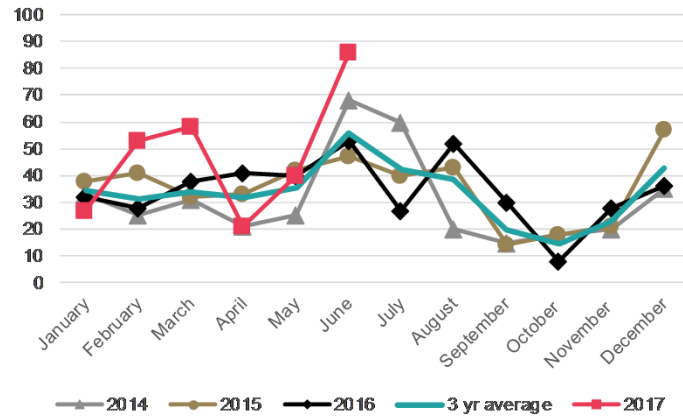
(*) Please note that numbers by sector may not always add up to the same as the total because sector is not always stated.

Nelson: TSV by market

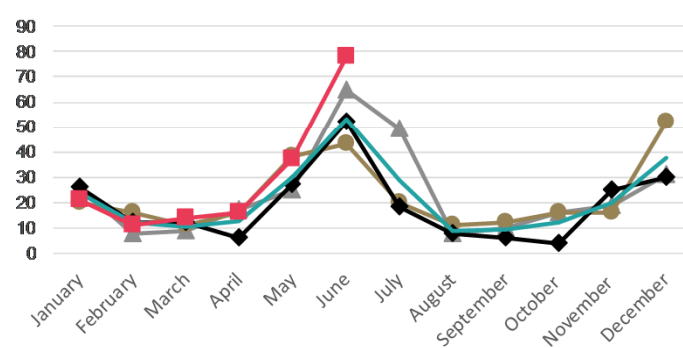
Country	2014 YTD	2015 YTD	2016 YTD	2017 YTD	Change Number	Change Percentage
Germany	78	96	95	90	-5	-5%
China	40	83	108	145	37	34%
India	42	115	142	76	-66	-46%
Japan	39	38	44	41	-3	-7%
Thailand	31	39	40	41	1	3%
Other	173	176	184	177	-7	-4%
Total	403	547	613	570	-43	-7%

- There has been a 23% (+53) increase in TSV for Northland for the YTD 2017 compared to the YTD 2016.
- This growth was attributed to increased TSV for China (+31%, +28).
- The number of students in Northland with valid visas on 1 July 2017 was 433, declining by 8% (-37) compared to the same day in 2016.

Northland: TSV approved in 2014-2017



Northland: FSV approved in 2014-2017

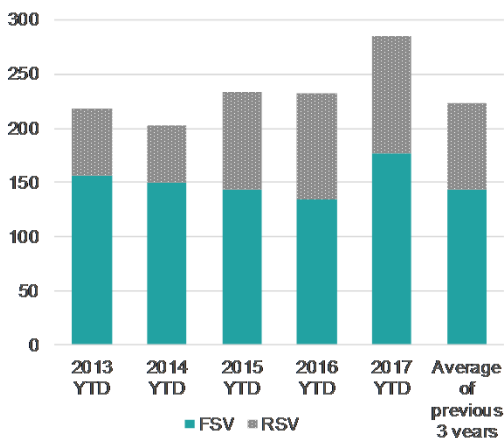


In brief

YTD	FSV	RSV	TSV
Visas	177	108	285
Change No.	42	11	53
Change Percent	31%	11%	23%

Changes are from the YTD 2016 to the YTD 2017

Northland: Cumulative FSV and RSV



Northland: 2016 total visas

FSV	226
RSV	187
TSV	413

Northland: TSV by sector (*)

	2014 YTD	2015 YTD	2016 YTD	2017 YTD	Change Number	Change Percentage
Schools	136	113	105	134	29	28%
ITP	61	117	124	151	27	22%
PTE	5	3	3	-	-3	-100%
Universities	1	-	-	-	0	
Total	203	233	232	285	53	23%

Northland: FSV by sector (*)

	2014 YTD	2015 YTD	2016 YTD	2017 YTD	Change Number	Change Percentage
Schools	104	87	81	99	18	22%
ITP	43	55	53	78	25	47%
PTE	2	2	1	-	-1	-100%
Universities	1	-	-	-	0	
Total	150	144	135	177	42	31%

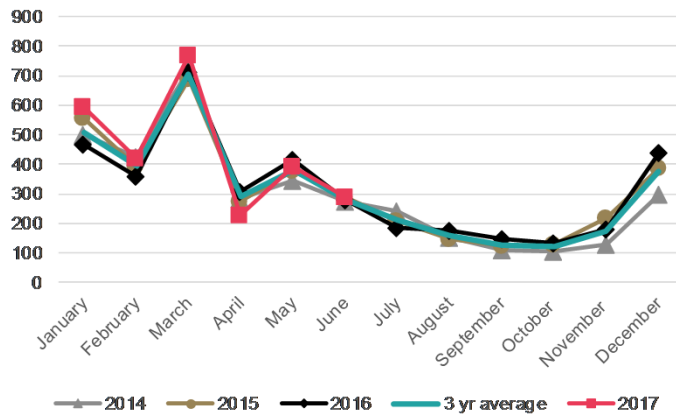
(*) Please note that numbers by sector may not always add up to the same as the total because sector is not always stated.

Northland: TSV by market

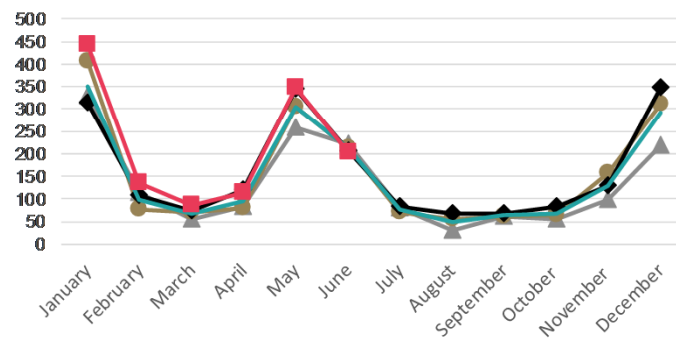
Country	2014 YTD	2015 YTD	2016 YTD	2017 YTD	Change Number	Change Percentage
China	49	81	89	117	28	31%
Germany	47	38	33	39	6	18%
India	14	32	32	30	-2	-6%
Korea	18	21	23	30	7	30%
Brazil	11	7	9	4	-5	-56%
Other	64	54	46	65	19	41%
Total	203	233	232	285	53	23%

- TSV have increased by 6% (+146) for the YTD 2017 compared to the YTD 2016. The TSV increase was in the Universities sector (+8%, +156), with most of the increase coming from FSV for students from the USA (+21%, +100).
- Overall YTD 2017 figures have been consistent with past years. As such, July 2017 may see a decrease in both FSV and TSV numbers.
- Otago had 3,810 students with valid visas as on 1 July 2017, which was stable (+0%,+8) compared to the same day in 2016.

Otago: TSV approved in 2014-2017



Otago: FSV approved in 2014-2017

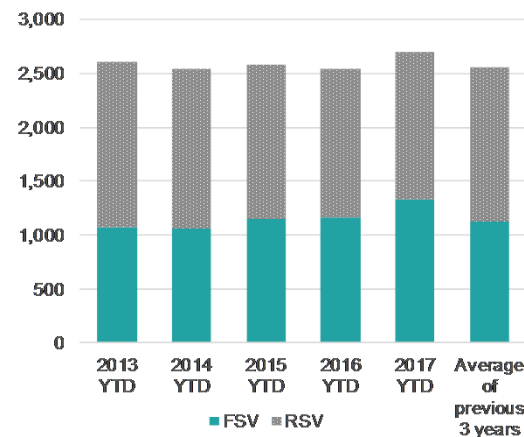


In brief

YTD	FSV	RSV	TSV
Visas	1,326	1,362	2,688
Change No.	156	- 11	145
Change Percent	13%	-1%	6%

Changes are from the YTD 2016 to the YTD 2017

Otago: Cumulative FSV and RSV



Otago: 2016 total visas

FSV	1,946
RSV	1,852
TSV	3,798

Otago: TSV by sector (*)

	2014 YTD	2015 YTD	2016 YTD	2017 YTD	Change Number	Change Percentage
Schools	306	294	285	334	49	17%
ITP	233	248	349	288	-61	-17%
PTE	17	16	11	12	1	9%
Universities	1,980	2,020	1,898	2,054	156	8%
Total	2,536	2,578	2,543	2,688	145	6%

Otago: FSV by sector (*)

	2014 YTD	2015 YTD	2016 YTD	2017 YTD	Change Number	Change Percentage
Schools	143	123	152	166	14	9%
ITP	74	106	134	139	5	4%
PTE	2	9	7	9	2	29%
Universities	831	914	877	1,012	135	15%
Total	1,050	1,152	1,170	1,326	156	13%

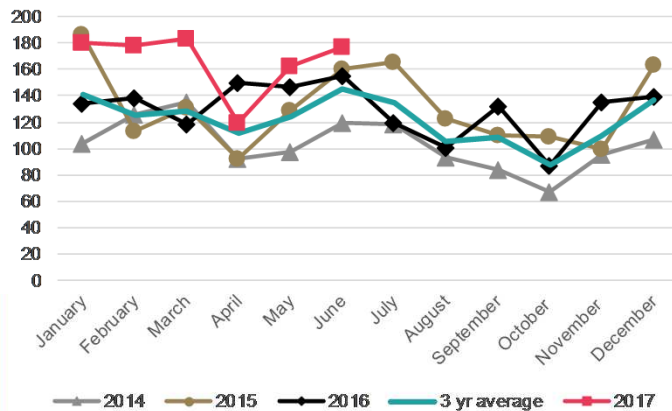
(*) Please note that numbers by sector may not always add up to the same as the total because sector is not always stated.

Otago: TSV by market

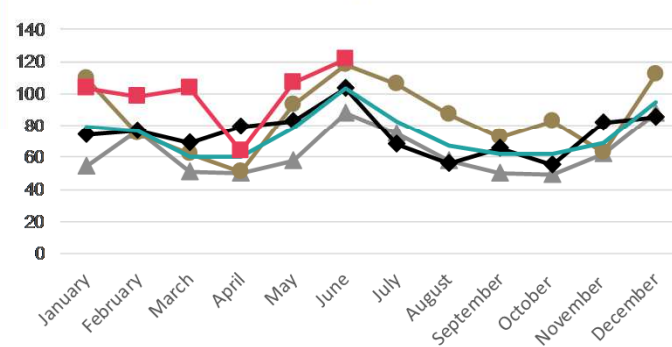
Country	2014 YTD	2015 YTD	2016 YTD	2017 YTD	Change Number	Change Percentage
China	599	575	651	631	-20	-3%
USA	431	538	466	566	100	21%
Malaysia	236	231	198	196	-2	-1%
Japan	129	118	105	112	7	7%
India	79	104	121	123	2	2%
Other	1,071	1,012	1,002	1,060	58	6%
Total	2,545	2,578	2,543	2,688	145	6%

- TSV have increased by 19% (+158) for the YTD 2017 compared to the YTD 2016. This was driven by an increase in FSV (+23%, +111) for the PTE (+57%, +99) sector. Both of these increases were driven by Brazilian (+88%, +46) and Chinese (+21%, +40) students.
- Southland had 1,1276 VSV on 1 July 2017, an increase of 47% (+409) since the same date last year.

Southland: TSV approved in 2014-2017



Southland: FSV approved in 2014-2017

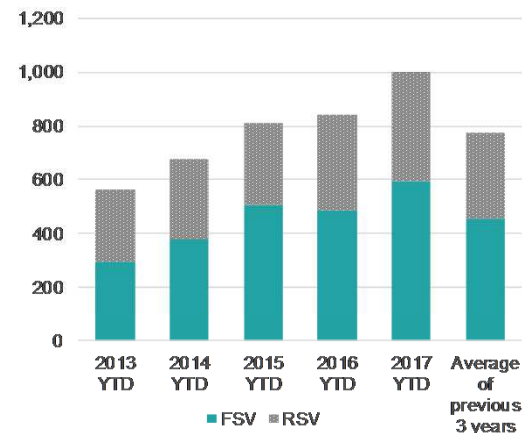


In brief

YTD	FSV	RSV	TSV
Visas	596	404	1,000
Change No.	111	47	158
Change Percent	23%	13%	19%

Changes are from the YTD 2016 to the YTD 2017

Southland: Cumulative FSV and RSV



Southland: 2016 total visas

FSV	896
RSV	659
TSV	1,555

Southland: TSV by sector (*)

	2014 YTD	2015 YTD	2016 YTD	2017 YTD	Change Number	Change Percentage
Schools	159	166	134	145	11	8%
ITP	349	430	495	556	61	12%
PTE	149	206	207	299	92	44%
Universities	17	9	6	-	-6	-100%
Total	674	811	842	1,000	158	19%

Southland: FSV by sector (*)

	2014 YTD	2015 YTD	2016 YTD	2017 YTD	Change Number	Change Percentage
Schools	108	100	80	82	2	3%
ITP	145	230	225	240	15	7%
PTE	111	170	175	274	99	57%
Universities	13	8	5	-	-5	-100%
Total	377	508	485	596	111	23%

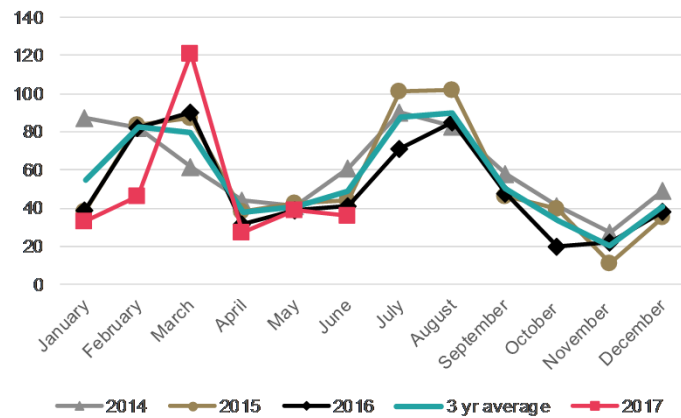
(*) Please note that numbers by sector may not always add up to the same as the total because sector is not always stated.

Southland: TSV by market

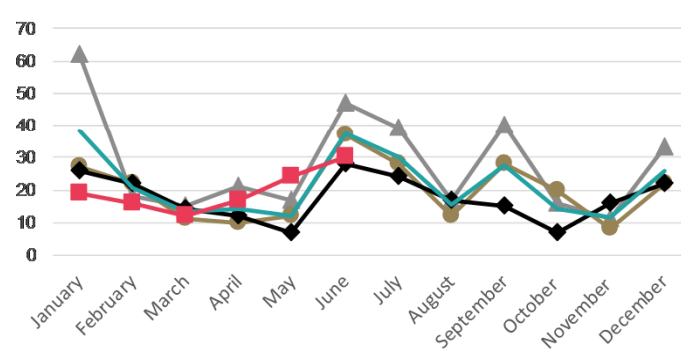
Country	2014 YTD	2015 YTD	2016 YTD	2017 YTD	Change Number	Change Percentage
China	191	166	192	232	40	21%
India	93	128	87	97	10	11%
Thailand	96	87	87	57	-30	-34%
Brazil	32	84	52	98	46	88%
Korea	33	52	78	79	1	1%
Other	230	294	346	437	91	26%
Total	675	811	842	1,000	158	19%

- TSV have decreased by 7% (- 21) for the 2017 YTD compared to the YTD 2016.
- Taranaki had 448 VSV on 1 July 2017, a decrease of 6% (- 27) compared to the same date last year.

Taranaki: TSV approved in 2014-2017



Taranaki: FSV approved in 2014-2017

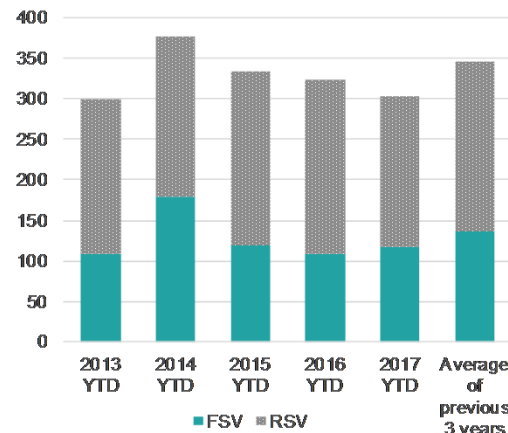


In brief

YTD	FSV	RSV	TSV
Visas	118	184	302
Change No.	9	- 30	- 21
Change Percent	8%	-14%	-7%

Changes are from the YTD 2016 to the YTD 2017

Taranaki: Cumulative FSV and RSV



Taranaki: 2016 total visas

FSV	210
RSV	397
TSV	607

Taranaki: TSV by sector (*)

	2014 YTD	2015 YTD	2016 YTD	2017 YTD	Change Number	Change Percentage
Schools	67	50	61	63	2	3%
ITP	73	85	68	54	-14	-21%
PTE	237	199	194	185	-9	-5%
Universities	-	-	-	-	0	
Total	377	334	323	302	-21	-7%

Taranaki: FSV by sector (*)

	2014 YTD	2015 YTD	2016 YTD	2017 YTD	Change Number	Change Percentage
Schools	35	23	35	39	4	11%
ITP	51	46	22	22	0	0%
PTE	94	50	52	57	5	10%
Universities	-	-	-	-	0	
Total	180	119	109	118	9	8%

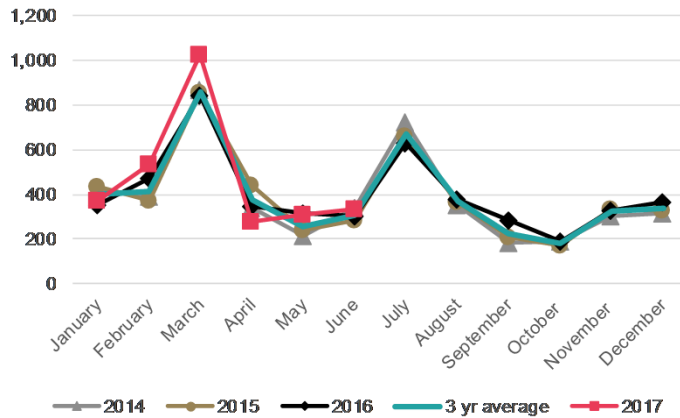
(*) Please note that numbers by sector may not always add up to the same as the total because sector is not always stated.

Taranaki: TSV by market

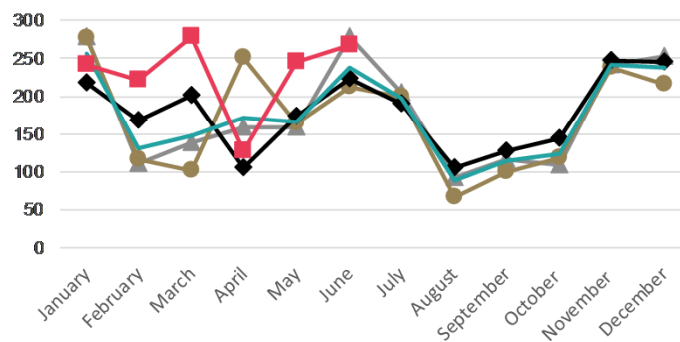
Country	2014 YTD	2015 YTD	2016 YTD	2017 YTD	Change Number	Change Percentage
India	134	131	120	94	-26	-22%
China	51	57	61	70	9	15%
Korea	73	43	26	16	-10	-38%
Viet Nam	18	19	21	25	4	19%
Russia	15	15	14	15	1	7%
Other	86	69	81	82	1	1%
Total	377	334	323	302	-21	-7%

- TSV increased by 8% (+217) for the YTD 2017, when compared to YTD 2016.
- FSV increased across all sectors, particularly the University (+39%, +158) sector.
- VSV for this region was 4,428 on 1 July 2017, an increase of 13% (+508) since the same date in 2016.

Waikato: TSV approved in 2014-2017



Waikato: FSV approved in 2014-2017

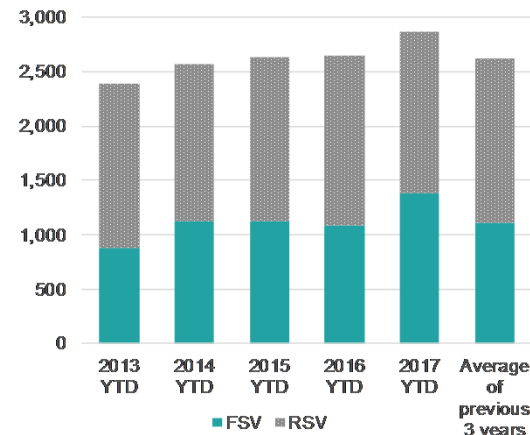


In brief

YTD	FSV	RSV	TSV
Visas	1,382	1,474	2,856
Change No.	294	- 77	217
Change Percent	27%	-5%	8%

Changes are from the YTD 2016 to the YTD 2017

Waikato: Cumulative FSV and RSV



Waikato: 2016 total visas

FSV	2,146
RSV	2,669
TSV	4,815

Waikato: TSV by sector (*)

	2014 YTD	2015 YTD	2016 YTD	2017 YTD	Change Number	Change Percentage
Schools	392	361	394	467	73	19%
ITP	638	768	816	805	-11	-1%
PTE	224	271	235	286	51	22%
Universities	1,315	1,226	1,194	1,298	104	9%
Total	2,569	2,626	2,639	2,856	217	8%

Waikato: FSV by sector (*)

	2014 YTD	2015 YTD	2016 YTD	2017 YTD	Change Number	Change Percentage
Schools	167	139	155	226	71	46%
ITP	258	309	359	360	1	0%
PTE	187	222	173	237	64	37%
Universities	507	449	401	559	158	39%
Total	1,119	1,119	1,088	1,382	294	27%

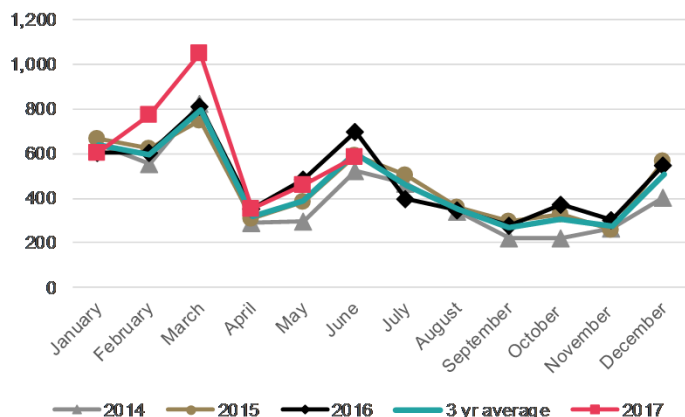
(*) Please note that numbers by sector may not always add up to the same as the total because sector is not always stated.

Waikato: TSV by market

Country	2014 YTD	2015 YTD	2016 YTD	2017 YTD	Change Number	Change Percentage
China	1,056	1,141	1,184	1,233	49	4%
India	227	311	338	406	68	20%
Saudi Arabia	188	170	84	75	-9	-11%
Korea	130	98	90	92	2	2%
UK	111	119	108	100	-8	-7%
Other	860	792	835	950	115	14%
Total	2,572	2,631	2,639	2,856	217	8%

- There was an 8% (+273) increase in TSV in the YTD 2017. Most of this growth can be attributed to growth in the Schools (+25%, +125) sector.
- Growth in FSV for the Universities (+10%, +90) and PTE (+29%, +53) sectors underpins overall FSV growth.
- The biggest increase in FSV was from Viet Nam (+102%, +64) and Colombia (+300%, +39).
- VSV for this region were 5,625 for 1 July 2017, an increase of 12% (+ 618) compared to the same date in 2016.

Wellington: TSV approved in 2014-2017



In brief

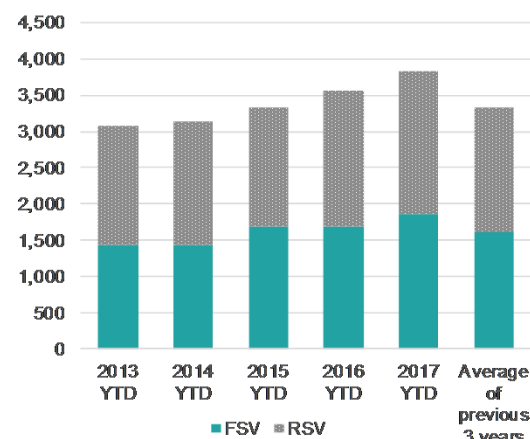
YTD	FSV	RSV	TSV
Visas	1,870	1,959	3,829
Change No.	176	97	273
Change Percent	10%	5%	8%

Changes are from the YTD 2016 to the YTD 2017

Wellington: TSV by sector (*)

	2014 YTD	2015 YTD	2016 YTD	2017 YTD	Change Number	Change Percentage
Schools	529	480	502	627	125	25%
ITP	426	571	714	740	26	4%
PTE	299	316	309	373	64	21%
Universities	1,872	1,939	2,017	2,083	66	3%
Total	3,126	3,306	3,542	3,823	281	8%

Wellington: Cumulative FSV and RSV



Wellington: FSV by sector (*)

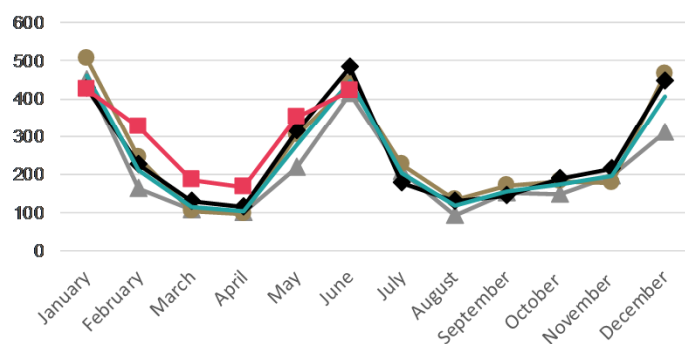
	2014 YTD	2015 YTD	2016 YTD	2017 YTD	Change Number	Change Percentage
Schools	329	231	258	306	48	19%
ITP	190	290	312	305	-7	-2%
PTE	163	183	180	233	53	29%
Universities	760	971	932	1,022	90	10%
Total	1,442	1,675	1,682	1,866	184	11%

(*) Please note that numbers by sector may not always add up to the same as the total because sector is not always stated.

Wellington: TSV by market

Country	2014 YTD	2015 YTD	2016 YTD	2017 YTD	Change Number	Change Percentage
China	878	1,087	1,289	1,334	45	3%
India	258	308	353	373	20	6%
USA	263	304	261	289	28	11%
Viet Nam	233	206	193	249	56	29%
Japan	121	125	149	147	-2	-1%
Other	1,378	1,291	1,311	1,437	126	10%
Total	3,131	3,321	3,556	3,829	273	8%

Wellington: FSV approved in 2014-2017



Wellington: 2016 total visas

FSV	2,990
RSV	2,817
TSV	5,807