

# Overall student visa trends May 2017



## Acronyms

**FSV – First-time student visas –** The number of visas issued to students for the first time. Visas for dependants and Section 61 applicants are excluded since these people do not fall under the definition of international students.

**RSV – Returning student visas –** The number of visas issued to students subsequent to the first issuing of visas. Visas for dependants and Section 61 applicants do not fall under the definition of international students.

**TSV – Total student visas –** The number of visas issued to students, either for the first time, or after the first time. Declined visas are not included. Visas for dependants and Section 61 applicants are excluded since these people do not fall under the definition of international students.

**VSV – Valid student visas –** The number of people holding a student visa and/or permit at the beginning of each calendar month. Visas for dependants are excluded. The presented figures can be interpreted as the number per month of international students with authority to study in a course of three or greater months in duration. This does not mean that these students are present in New Zealand for the entire duration of their visa.

**YTD – Year-to-date.**

## Sectors

**ITP – Institutes of Technology and Polytechnics.**

**PTE – Private Training Establishments, including Private Training Establishments, which receive government funding.**

**Schools –** Includes all students in primary, intermediate and secondary schools.

## Additional notes

- Results for YTD this year will be compared to the YTD 2016 unless otherwise stated.

## **International student**

International student – Students who are non-residents of New Zealand and Australia who:

- have entered into New Zealand expressly with the intention to study
- have enrolled with a New Zealand provider offshore, where the educational programme is delivered in-market.

Rule 18 – Rule governing English Language requirements for certain international students. More information about this is available on <http://www.nzqa.govt.nz/about-us/our-role/legislation/nzqa-rules/nzqf-related-rules/programme-approval-and-accreditation/8/18/>

Section 61 – Visas issued to people who are currently in New Zealand outside of Immigration NZ policy.

## **Scope of this document**

- This dashboard excludes dependants, applicants under Section 61, and applications for variation of conditions.
- There is a potential delay between students having their visas approved and their actual entry into New Zealand, therefore, the figures shown here may not necessarily represent the actual number of students currently in New Zealand.
- VSV are the best real-time indicator of international students present in New Zealand. A VSV indicates that students are able to be present in New Zealand. VSV do not include students who are in New Zealand on working holiday visas or visitor visas, and not all students with VSV are present in New Zealand for the entire duration of their visas.

The student visa dashboard does not include all international students:

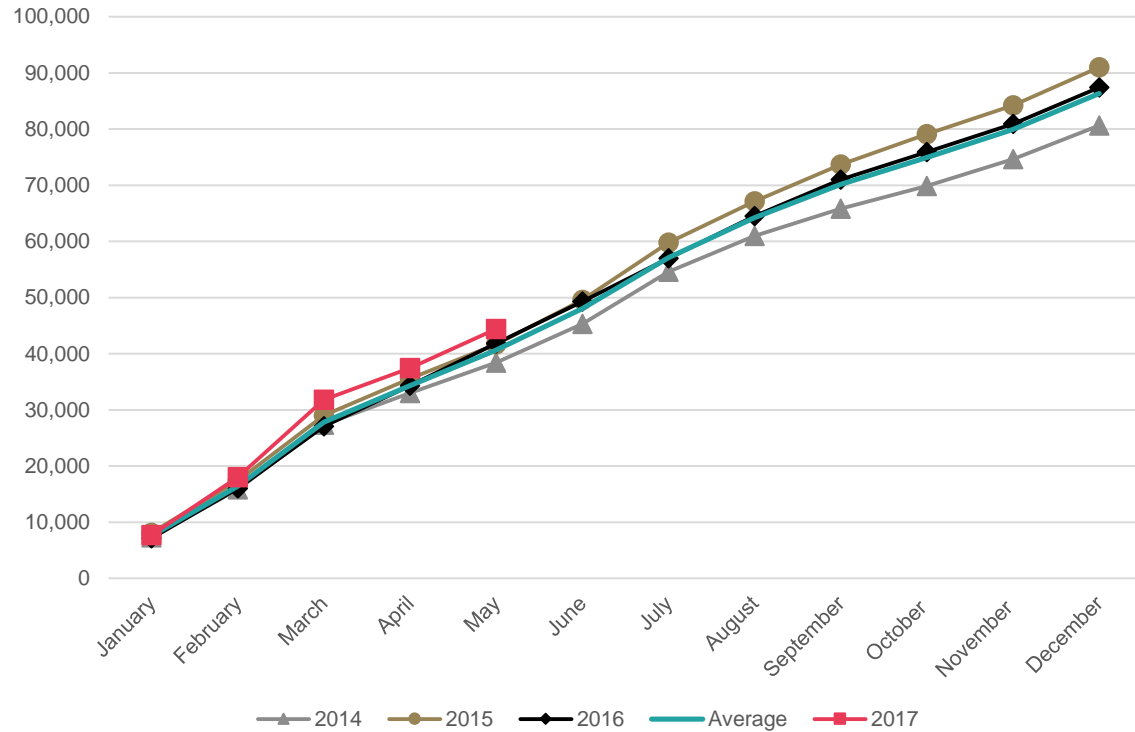
- Student visas only capture students who enter New Zealand with a student visa. These students are mostly those who are planning to study for more than three months.
- Students who undertake a course less than three months in duration are not required to enter on a student visa. Students who do choose to enter on a visitor visa (usually from visa-free nationalities) are not captured in this dashboard.
- Working holiday visas allow students to study for up to six months. Those who enter New Zealand on a working holiday visa and plan on taking up this option are not included in this dashboard. These factors will affect PTE numbers.

1. VSV numbers for 1 June 2017 are up 2% (+1,130) on 1 June 2016, which suggests enrolments will be slightly up on 2016<sup>[1]</sup>.
2. TSV for the YTD have increased 6% (+2,541) from the YTD 2016. This is despite TSV for both May and April being down when compared to the same months in 2016. A combination of faster visa processing times and increased university visas front-loaded visa numbers, while decreased PTE visas are now affecting overall TSV.
3. The number of university students with valid visas now exceeds the number of PTE students with valid visas.
4. Most key markets show TSV increases apart from India, Japan, Korea and Saudi Arabia which have decreased.
5. The India market continues to rebalance. Decreased PTE FSV (-47%, -882) and VSV (-42%, 4,800) point to a large decrease in India student numbers for 2017. This is despite increases in India university FSV (+46%, +155).
6. The Universities sector FSV grew by 19% (+850) compared to the YTD 2016.
7. FSV increases for the YTD were in the universities (+19%, +850), schools (+11%, +312) and ITP (+7%, +192) sectors. The PTE sector declined (-6%, -398).
8. Key markets with FSV increases YTD were China (+9%, +295), USA (+25%, +287), Viet Nam (+95%, +217), Brazil (+24%, +160), Chile (81%, +154) and Colombia (+50%, +152).

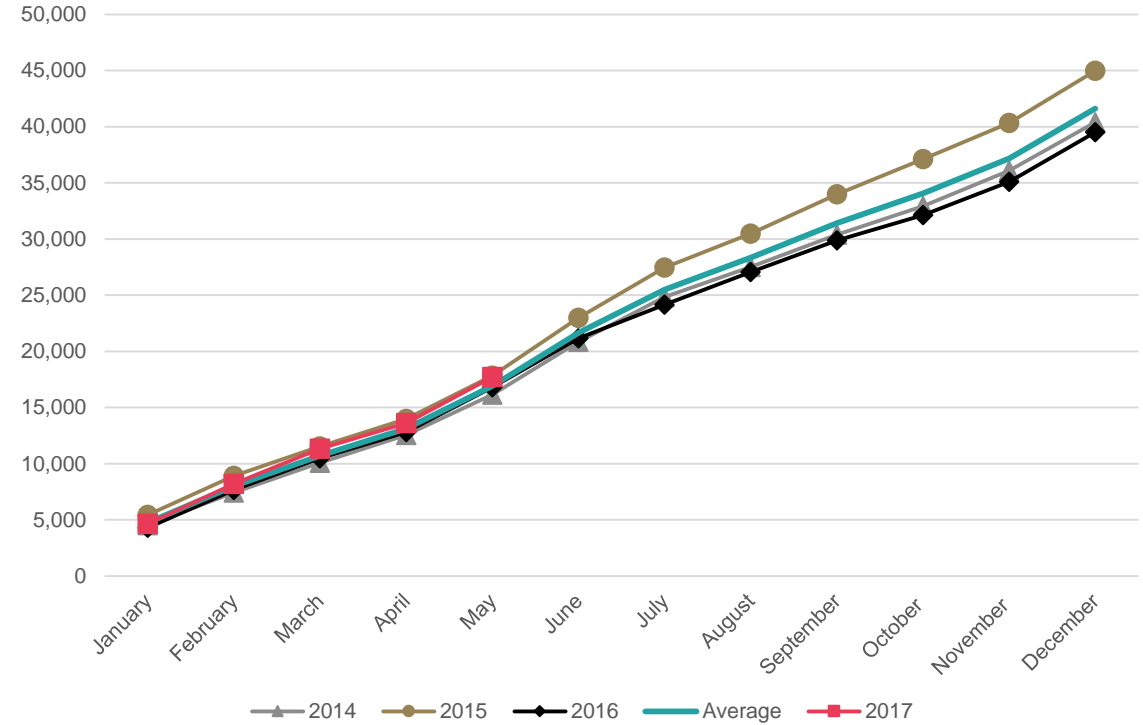
<sup>[1]</sup> VSV are measured at the first of the month. In this case 01 June 2017.

# Comparison to previous years (cumulative)

TSV approved - cumulative



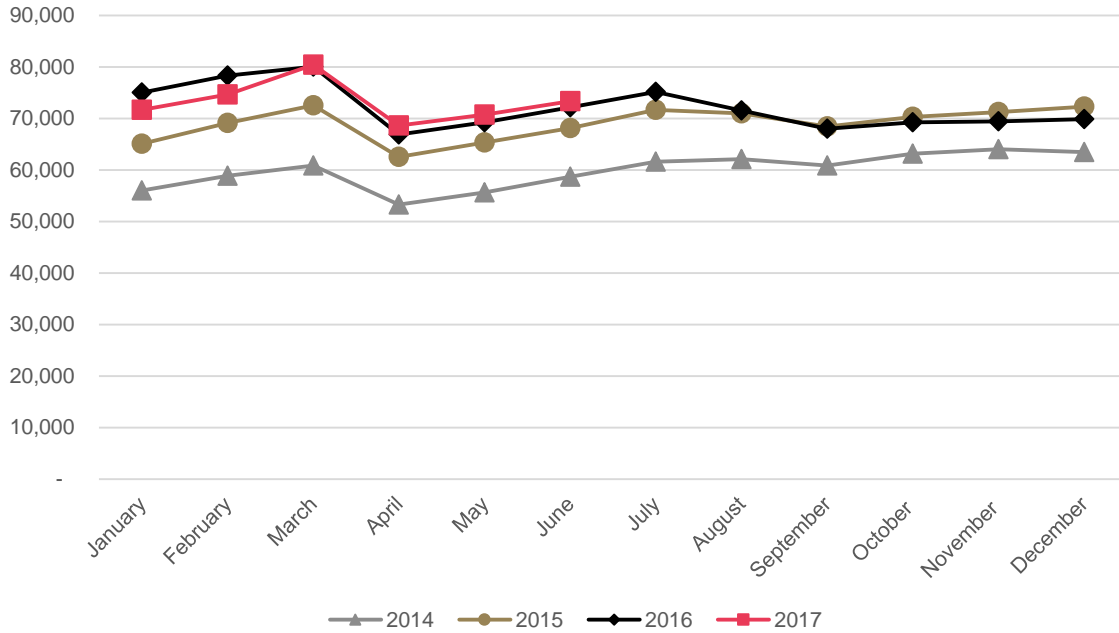
FSV approved - cumulative



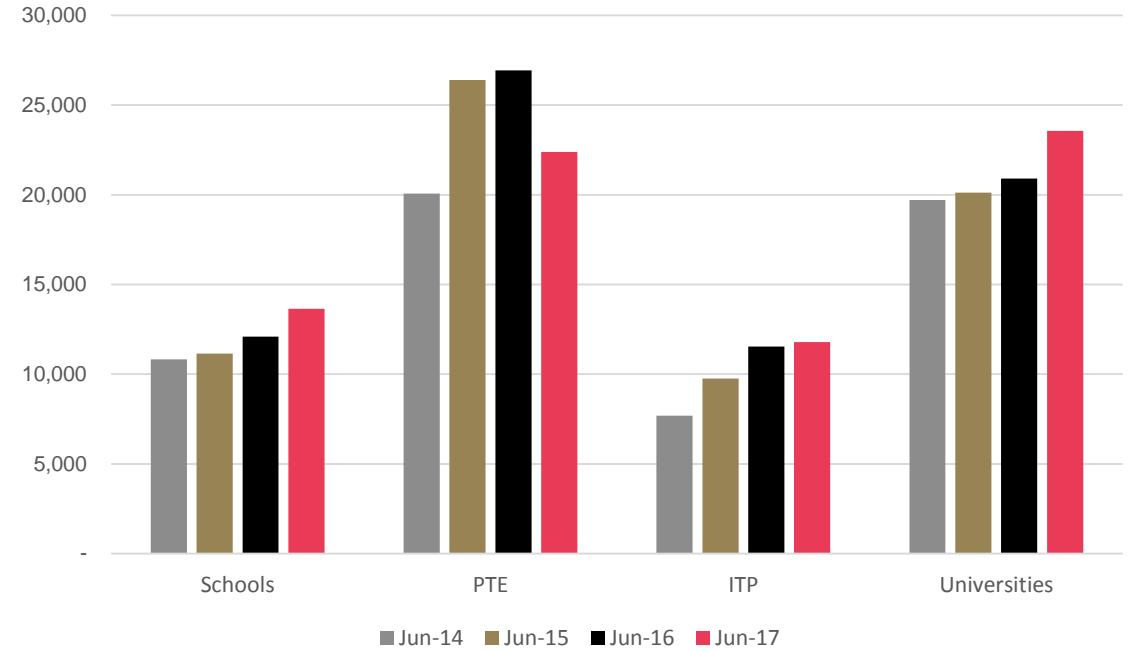
- TSV are up 6% for the YTD 2017 compared to the YTD 2016. This is despite decreases in visa numbers for April and May (faster processing times, a focus on processing increased universities visas and a downturn in PTE visas).
- FSV are up 3% on May 2016.

# Valid student visas

VSV by year



VSV by sector



- VSV were 73,305 as at 1 June 2017, which was a 2% increase (+1,130) compared to 1 June 2016.
- Compared to last June, universities (+11%, +2,659), schools (+11%, +1,551), and ITP (+2%, +257) sectors have all increased in VSV since the same day in 2016, while PTE (-20%, -4,545) have declined. The decline in PTE is due to rebalancing of the Indian market.
- The number of university students with valid visas now exceeds the number of PTE students with valid visas.

*Note: VSV are the number of valid student visas for New Zealand on the first day of the month. It is used as an indicator of student numbers. VSV doesn't differentiate between FSV or RSV. Students on a work or visitor visa are not captured by this dataset so total student numbers will be higher than this data set shows.*



# Trends by market

---



## **In order of appearance:**

**South East Asia** includes: Brunei Darussalam, Cambodia, Indonesia, Laos, Malaysia, Myanmar, Philippines, Singapore, Thailand, and Viet Nam.

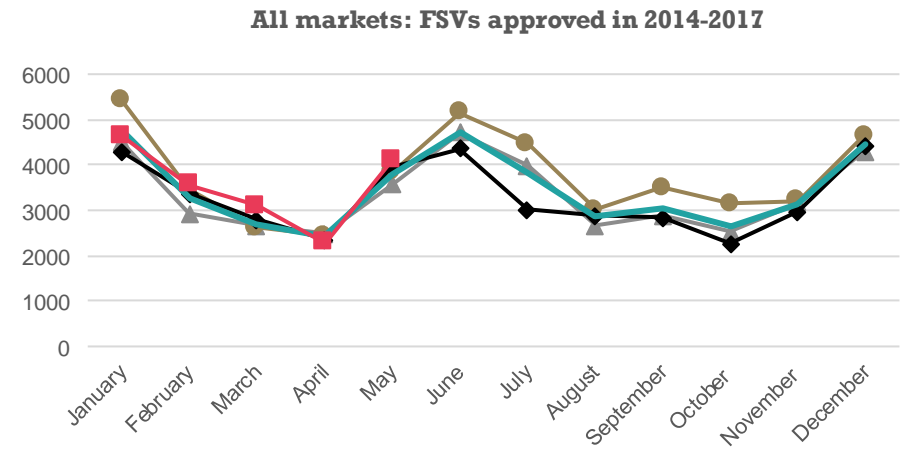
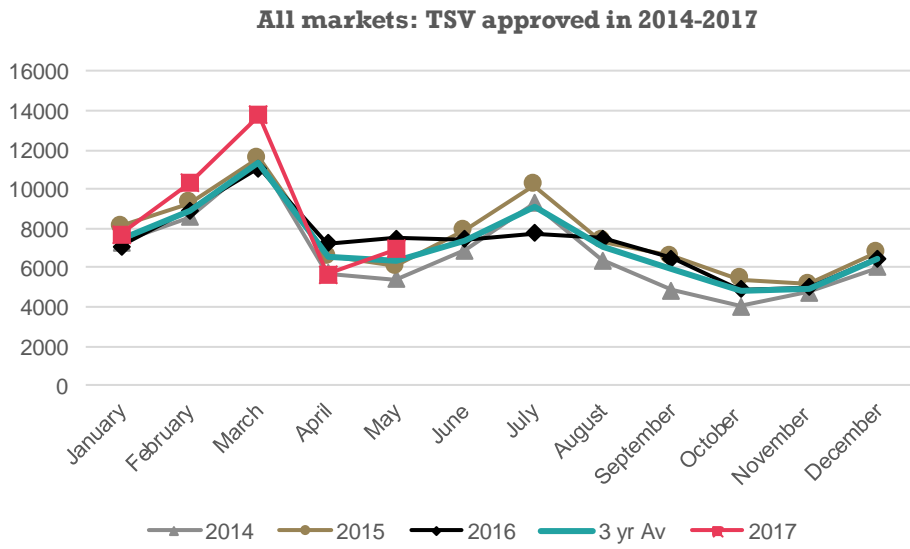
**Latin America** includes: Argentina, Bolivia, Brazil, Chile, Colombia, Ecuador, El Salvador, Guatemala, Mexico, Nicaragua, Panama, Paraguay, Peru, Suriname, Trinidad and Tobago, Turks and Caicos Islands, Uruguay, Venezuela, Cuba, Honduras, St Lucia, Costa Rica, Dominican Republic, Belize, Dominica, St Vincent and the Grenadines, Guyana, and Honduras.

**Europe** includes: Austria, Belarus, Belgium, Bulgaria, Croatia, Czech Republic, Denmark, Estonia, Finland, France, Georgia, Germany, UK, Greece, Hungary, Iceland, Ireland, Italy, Latvia, Liechtenstein, Lithuania, Luxembourg, Macedonia, Netherlands, Norway, Poland, Portugal, Romania, Russia, Serbia, Serbia & Montenegro, Slovakia, Spain, Sweden, Switzerland, Turkey, Ukraine, Yugoslavia, Kosovo, Armenia, Bosnia and Herzegovina, Albania, Andorra, Cyprus, Slovenia, and Monaco.

**Middle East** includes: Bahrain, Iran, Iraq, Israel, Jordan, Kuwait, Lebanon, Libya, Oman, Palestine, Qatar, Saudi Arabia, Syria, United Arab Emirates, and Yemen.



- TSV have increased by 6% (+2,541) from the YTD 2016 to the YTD 2017.
- Most key markets showed TSV increases, apart from India, Japan, Korea and Saudi Arabia which have decreased.
- All sectors showed increases in both TSV and FSV, apart from PTE sector, which had a decrease in FSV (-6%, -398).
- All regions showed increases in TSV, apart from Hawke's Bay, Nelson and Taranaki, which were flat or declining.



### In brief

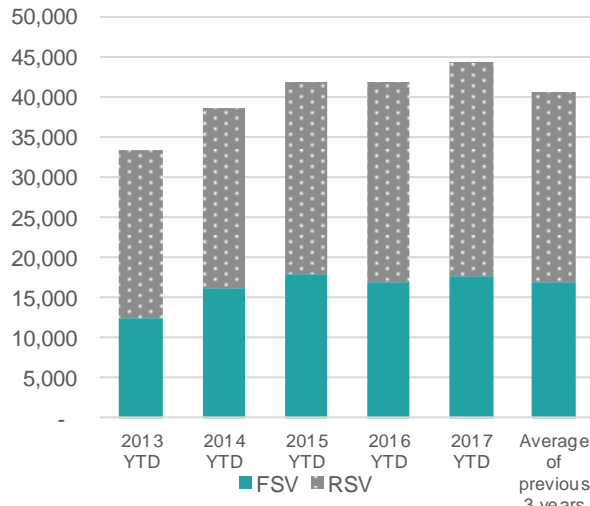
YTD	FSV	RSV	TSV
Visas	17,705	26,684	44,389
Change No.	909	1,632	2,541
Change Percent	5%	7%	6%

Changes are from the YTD 2016 to the YTD 2017

### All markets: TSV by sector (\*)

	2014 YTD	2015 YTD	2016 YTD	2017 YTD	Change Number	Change Percentage
Schools	6,610	6,772	7,095	8,015	920	13%
ITP	4,869	6,121	6,545	7,054	509	8%
PTE	13,155	14,527	13,888	13,504	-384	-3%
Universities	13,645	14,098	14,180	15,721	1541	11%
Total	38,279	41,518	41,708	44,294	2586	6%

### All markets: Cumulative FSV and RSV



### All markets: FSV by sector (\*)

	2014 YTD	2015 YTD	2016 YTD	2017 YTD	Change Number	Change Percentage
Schools	2,821	2,702	2,844	3,156	312	11%
ITP	1,865	2,816	2,833	3,025	192	7%
PTE	7,345	7,682	6,597	6,199	-398	-6%
Universities	4,014	4,466	4,393	5,243	850	19%
Total	16,045	17,666	16,667	17,623	956	6%

(\*) Please note that numbers by sector may not always add up to the same as the total because sector is not always stated.

### All markets: TSV by region

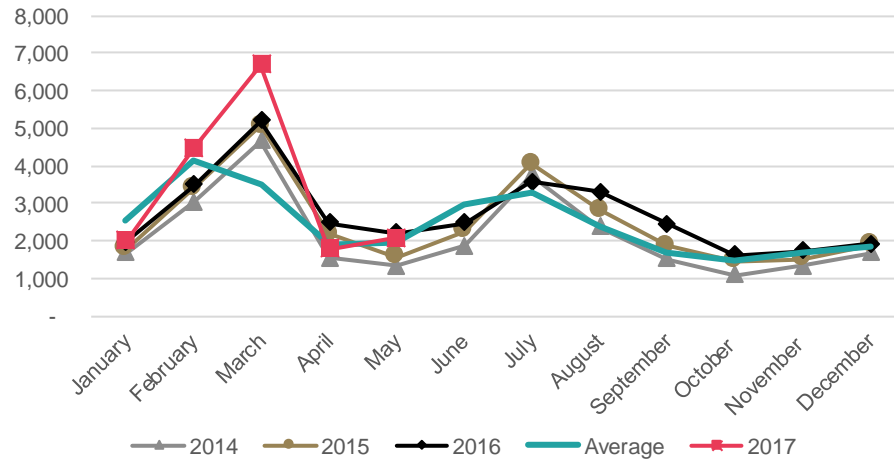
Region	2014 YTD	2015 YTD	2016 YTD	2017 YTD	Change Number	Change Percentage
Auckland	23,204	25,618	25,407	26,890	1483	6%
Canterbury	3,612	3,839	3,965	4,245	280	7%
Wellington	2,611	2,732	2,858	3,247	389	14%
Waikato	2,233	2,349	2,336	2,521	185	8%
Otago	2,273	2,288	2,263	2,403	140	6%
Other	4,481	4,855	5,019	5,083	64	1%
Total	38,414	41,681	41,848	44,389	2541	6%

### All markets: 2016 total visas

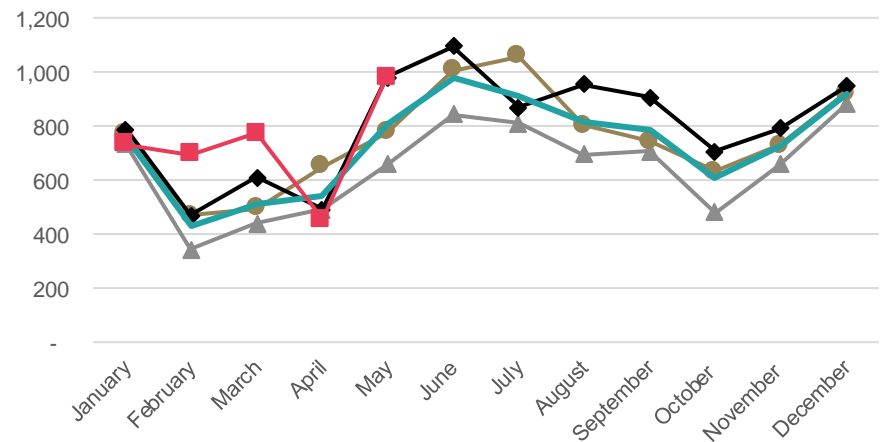
FSV	39,501
RSV	47,909
TSV	87,410

- TSV have increased by 11% (+1,708) from the YTD 2016 to the YTD 2017.
- FSV increased for all sectors, especially the ITP (+15%, 70) and PTE (+13%, +135) sectors.
- VSV for China increased by 15% (+3,208) as of 1 June 2017 compared to 1 June 2016, and now number 25,153.
- Should annual trends continue, FSV and TSV for YTD June 2017 may increase.

**China: TSV approved in 2014-2017**



**China: FSV approved in 2014-2017**



**In brief**

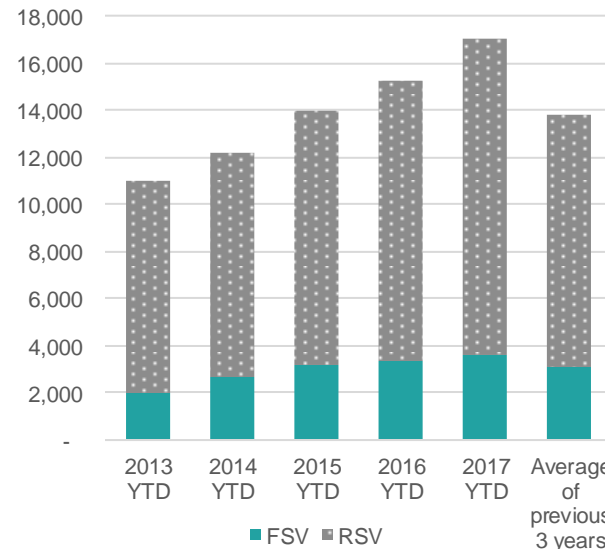
YTD	FSV	RSV	TSV
Visas	3,639	13,370	17,009
Change No.	295	1,413	1,708
Change Percent	9%	12%	11%

Changes are from the YTD 2016 to the YTD 2017

**China: TSV by sector (\*)**

	2014 YTD	2015 YTD	2016 YTD	2017 YTD	Change Number	Change Percentage
Schools	1,837	2,284	2,690	3,250	560	21%
ITP	1,960	2,198	2,338	2,560	222	9%
PTE	2,705	3,288	3,607	3,879	272	8%
Universities	5,713	6,191	6,666	7,317	651	10%
<b>Total</b>	<b>12,215</b>	<b>13,961</b>	<b>15,301</b>	<b>17,006</b>	<b>1705</b>	<b>11%</b>

**China: Cumulative FSV and RSV**



**China: FSV by sector (\*)**

	2014 YTD	2015 YTD	2016 YTD	2017 YTD	Change Number	Change Percentage
Schools	630	784	830	897	67	8%
ITP	396	426	467	537	70	15%
PTE	724	971	1,076	1,211	135	13%
Universities	919	980	971	993	22	2%
<b>Total</b>	<b>2,669</b>	<b>3,161</b>	<b>3,344</b>	<b>3,638</b>	<b>294</b>	<b>9%</b>

(\*) Please note that numbers by sector may not always add up to the same as the total because sector is not always stated.

**China: TSV by region**

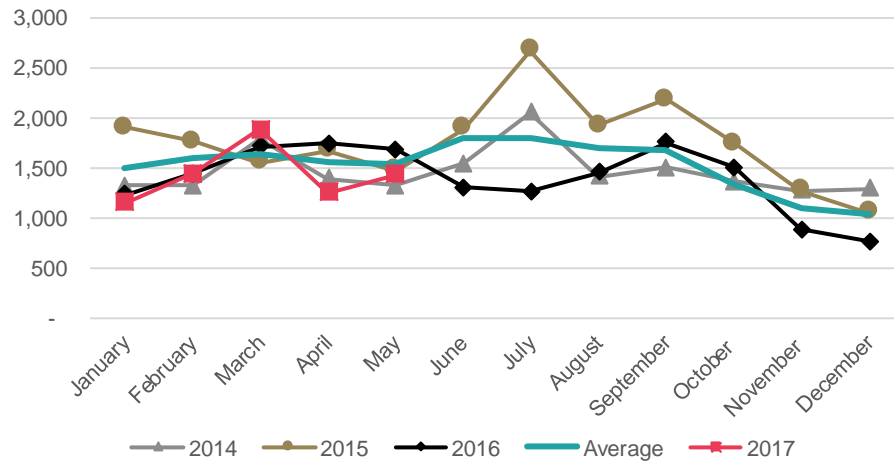
Region	2014 YTD	2015 YTD	2016 YTD	2017 YTD	Change Number	Change Percentage
Auckland	8,044	9,313	10,294	11,402	1108	11%
Canterbury	1,090	1,327	1,391	1,653	262	19%
Waikato	968	1,048	1,083	1,148	65	6%
Wellington	753	926	1,068	1,169	101	9%
Otago	561	526	600	565	-35	-6%
Other	802	822	865	1,072	207	24%
<b>Total</b>	<b>12,218</b>	<b>13,962</b>	<b>15,301</b>	<b>17,009</b>	<b>1708</b>	<b>11%</b>

**China: 2016 Total visas**

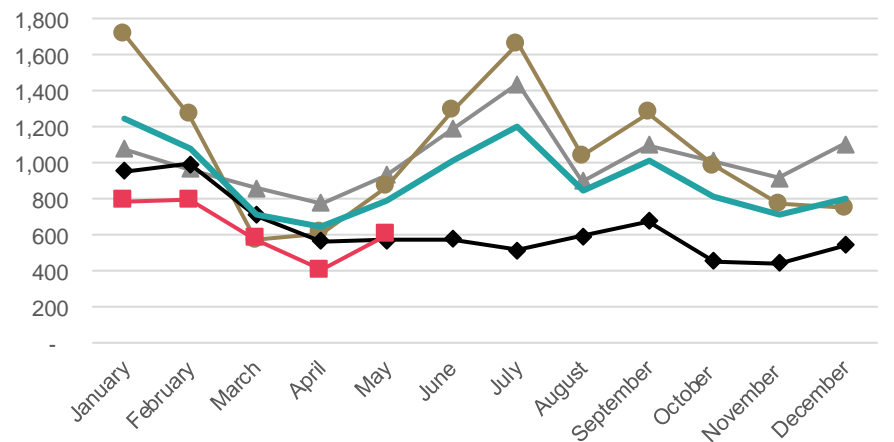
FSV	9,622
RSV	22,734
TSV	32,356

- TSV for the YTD 2017 decreased by 8% (-661) compared to the YTD 2016.
- FSV declined by 17% (-632), attributed largely to a decline in the PTE sector that registered nearly half the amount (-882) of students as the YTD 2016.
- FSV in the university sector increased substantially (+46%, +155) as the market moves toward higher-level qualifications.
- VSV were 13,203 on 1 June 2017, a decrease of 26% (-4,529) from the same date last year. Most of this decrease comes from the PTE sector (-42%, -4,800).

**India: TSV approved in 2014-2017**



**India: FSV approved in 2014-2017**



**In brief**

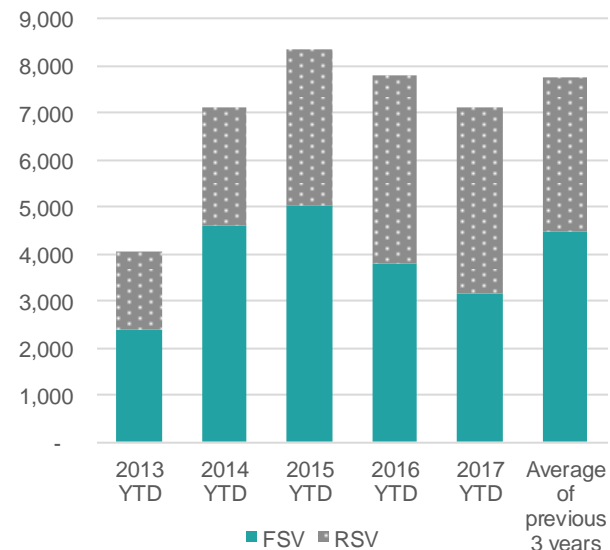
YTD	FSV	RSV	TSV
Visas	3,156	3,974	7,130
Change No.	- 632	- 29	- 661
Change Percent	-17%	-1%	-8%

Changes are from the YTD 2016 to the YTD 2017

**India: TSV by sector (\*)**

	2014 YTD	2015 YTD	2016 YTD	2017 YTD	Change Number	Change Percentage
Schools	26	44	61	53	-8	-13%
ITP	1,282	2,210	2,487	2,701	214	9%
PTE	5,269	5,544	4,628	3,531	-1097	-24%
Universities	554	535	611	843	232	38%
Total	7,131	8,333	7,787	7,128	-659	-8%

**India: Cumulative FSV and RSV**



**India: FSV by sector (\*)**

	2014 YTD	2015 YTD	2016 YTD	2017 YTD	Change Number	Change Percentage
Schools	12	28	39	21	-18	-46%
ITP	826	1,635	1,550	1,663	113	7%
PTE	3,482	3,076	1,859	977	-882	-47%
Universities	287	279	340	495	155	46%
Total	4,607	5,018	3,788	3,156	-632	-17%

(\* Please note that numbers by sector may not always add up to the same as the total because sector is not always stated.

**India: TSV by region**

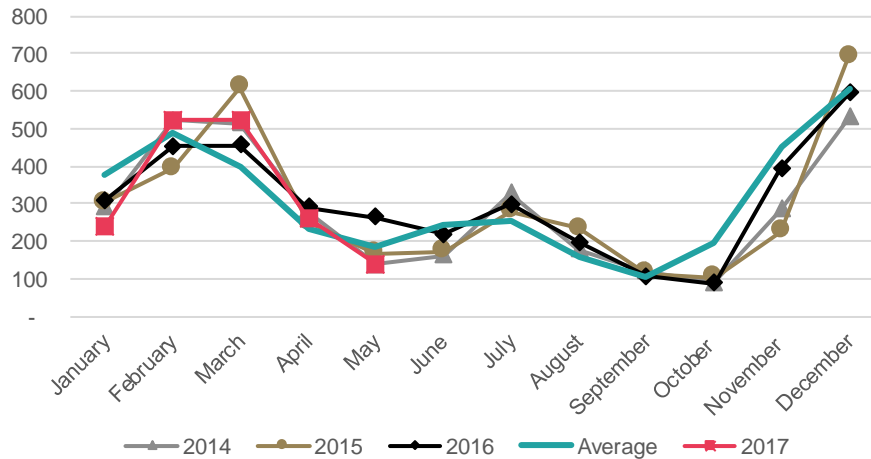
Region	2014 YTD	2015 YTD	2016 YTD	2017 YTD	Change Number	Change Percentage
Auckland	5,037	5,863	5,154	4,722	-432	-8%
Canterbury	655	646	691	603	-88	-13%
Bay of Plenty	570	665	691	491	-200	-29%
Wellington	212	255	279	322	43	15%
Waikato	185	253	286	356	70	24%
Other	475	652	690	636	-54	-8%
Total	7,134	8,334	7,791	7,130	-661	-8%

**India: 2016 Total visas**

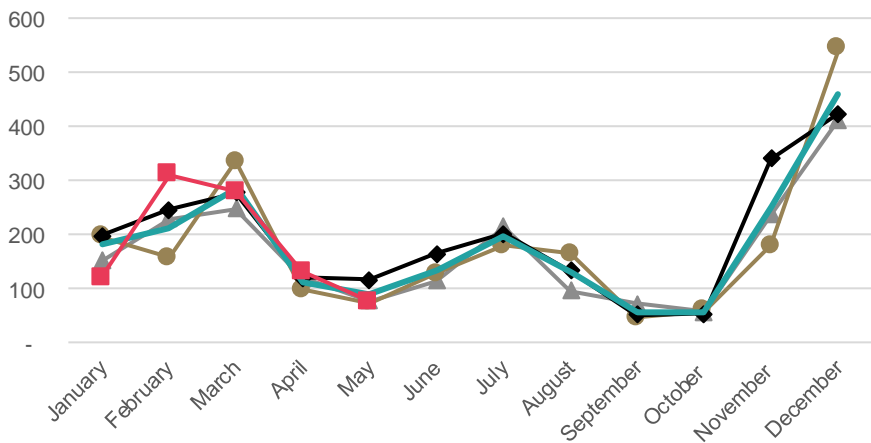
FSV	7,587
RSV	9,095
TSV	16,682

- TSV for the YTD 2017 decreased by 5% (-87) compared to the YTD 2016, reflective of a decrease across all sectors excluding universities (+7%, +22).
- Whilst FSV for the ITP, schools and PTE sectors have declined in the YTD 2017, the universities sector has experienced its largest growth since 2014 (+25%, +35).
- VSV were 2,888 on 1 June 2017, an increase of 2% (+67) over the same date last year.
- FSV and TSV in YTD June 2017 for universities are expected to increase marginally, acknowledging annual trends.

Japan: TSV approved in 2014-2017



Japan: FSV approved in 2014-2017



In brief

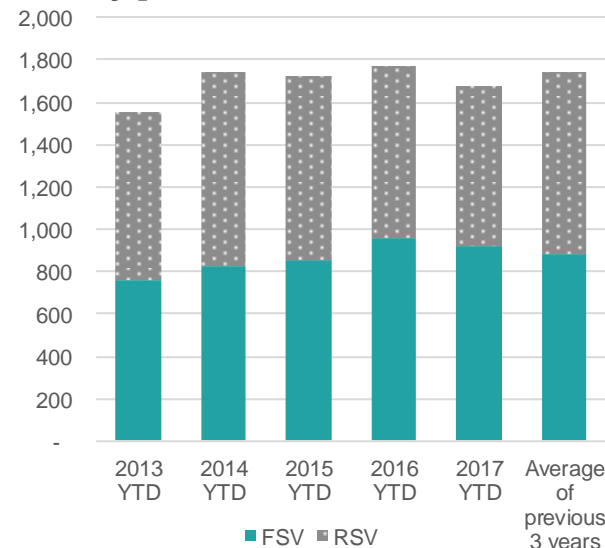
YTD	FSV	RSV	TSV
Visas	916	765	1,681
Change No.	- 41	- 46	- 87
Change Percent	-4%	-6%	-5%

Changes are from the YTD 2016 to the YTD 2017

Japan: TSV by sector (\*)

	2014 YTD	2015 YTD	2016 YTD	2017 YTD	Change Number	Change Percentage
Schools	735	737	741	732	-9	-1%
ITP	104	78	107	77	-30	-28%
PTE	566	567	586	525	-61	-10%
Universities	335	322	325	347	22	7%
Total	1,740	1,704	1,759	1,681	-78	-4%

Japan: Cumulative FSV and RSV



Japan: FSV by sector (\*)

	2014 YTD	2015 YTD	2016 YTD	2017 YTD	Change Number	Change Percentage
Schools	253	273	312	312	0	0%
ITP	69	47	80	45	-35	-44%
PTE	372	374	417	385	-32	-8%
Universities	127	143	139	174	35	25%
Total	821	837	948	916	-32	-3%

(\*) Please note that numbers by sector may not always add up to the same as the total because sector is not always stated.

Japan: TSV by region

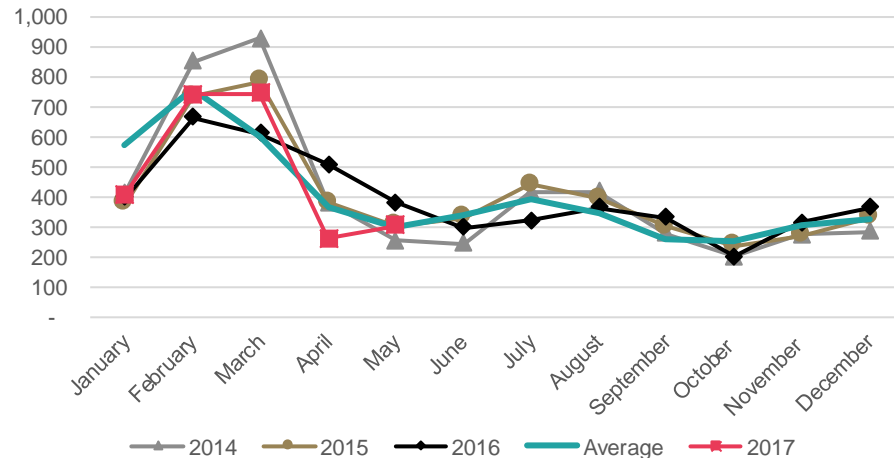
Region	2014 YTD	2015 YTD	2016 YTD	2017 YTD	Change Number	Change Percentage
Auckland	771	768	798	727	-71	-9%
Canterbury	268	287	307	313	6	2%
Manawatu	223	201	176	189	13	7%
Wellington	108	116	123	119	-4	-3%
Otago	121	112	92	97	5	5%
Other	254	239	272	236	-36	-13%
Total	1,745	1,723	1,768	1,681	-87	-5%

Japan: 2016 Total visas

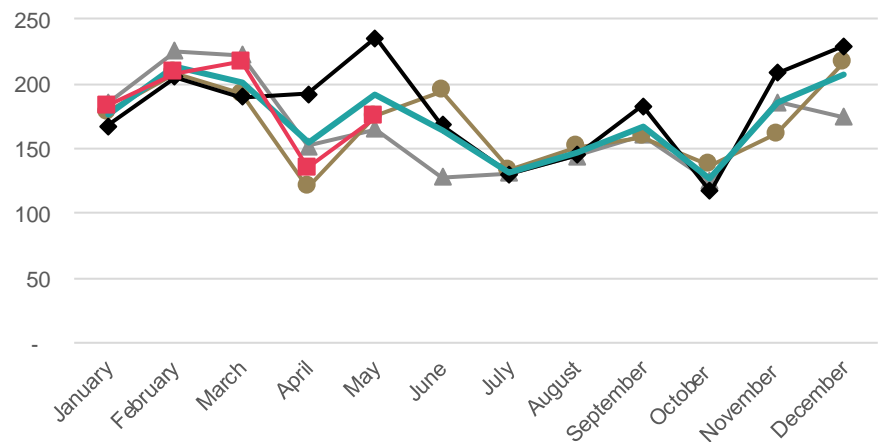
FSV	2,323
RSV	1,340
TSV	3,663

- TSV for 2017 are stable (-4%, - 98) compared to the YTD 2016.
- TSV from Korea have decreased for the PTE sector (-144, -16%) and increased for the schools sector (+6%, +63) compared to YTD 2016.
- The 25% (+61) increase in TSV for the Bay of Plenty was driven by schools.
- There were 3,541 VSV on June 1 2017, which was an increase compared to the same date last year (+4%, +122).

**Korea: TSV approved in 2014-2017**



**Korea: FSV approved in 2014-2017**



**In brief**

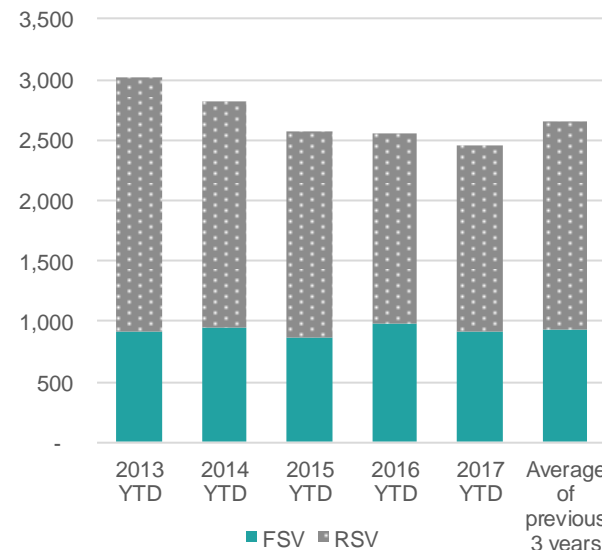
YTD	FSV	RSV	TSV
Visas	917	1,535	2,452
Change No.	- 72	- 26	- 98
Change Percent	-7%	-2%	-4%

Changes are from the YTD 2016 to the YTD 2017

**Korea: TSV by sector (\*)**

	2014 YTD	2015 YTD	2016 YTD	2017 YTD	Change Number	Change Percentage
Schools	1,219	1,126	1,054	1,117	63	6%
ITP	124	119	146	169	23	16%
PTE	873	839	909	765	-144	-16%
Universities	603	489	441	401	-40	-9%
Total	2,819	2,573	2,550	2,452	-98	-4%

**Korea: Cumulative FSV and RSV**



**Korea: FSV by sector (\*)**

	2014 YTD	2015 YTD	2016 YTD	2017 YTD	Change Number	Change Percentage
Schools	357	338	362	362	0	0%
ITP	40	43	62	66	4	6%
PTE	483	448	523	442	-81	-15%
Universities	69	44	42	47	5	12%
Total	949	873	989	917	-72	-7%

(\*) Please note that numbers by sector may not always add up to the same as the total because sector is not always stated.

**Korea: TSV by region**

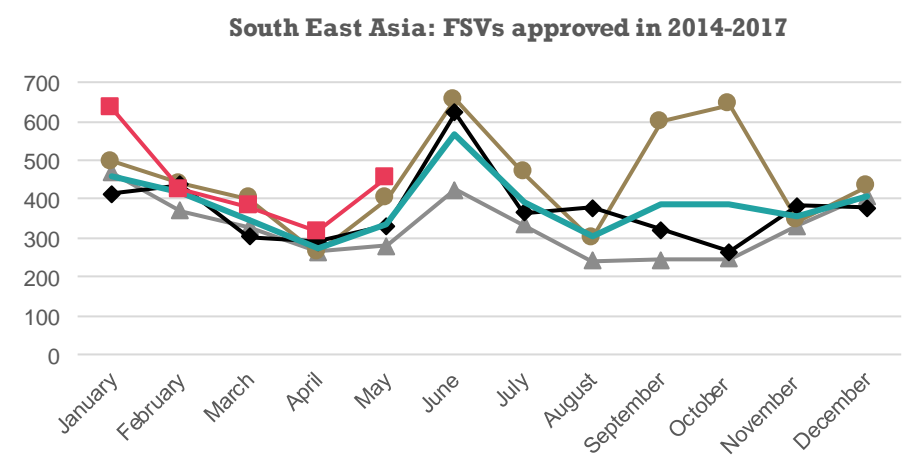
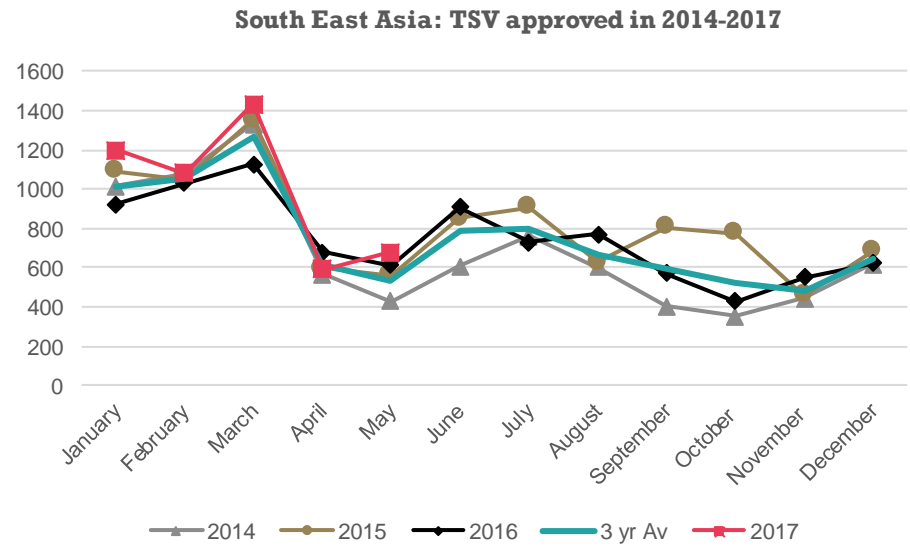
Region	2014 YTD	2015 YTD	2016 YTD	2017 YTD	Change Number	Change Percentage
Auckland	2,002	1,814	1,770	1,602	-168	-9%
Bay of Plenty	187	202	245	306	61	25%
Canterbury	219	188	146	139	-7	-5%
Waikato	118	89	82	79	-3	-4%
Wellington	83	70	78	87	9	12%
Other	211	210	229	239	10	4%
Total	2,820	2,573	2,550	2,452	-98	-4%

**Korea: 2016 Total visas**

FSV	2,169
RSV	2,561
TSV	4,730



- TSV have increased by 14% (+611) in the YTD 2017 compared to the YTD 2016. This increase was across all sectors, particularly within the universities (+12%, +215) and PTE (+21%, +259) sectors.
- The main contributors to this increase were Viet Nam (+27%, +226), the Philippines (+17%, +104), Indonesia (+25%, +86), Thailand (+5%, +68) and Cambodia (+47%, +63).
- FSV for the YTD June 2017 underpin an increase in TSV from South East Asia.

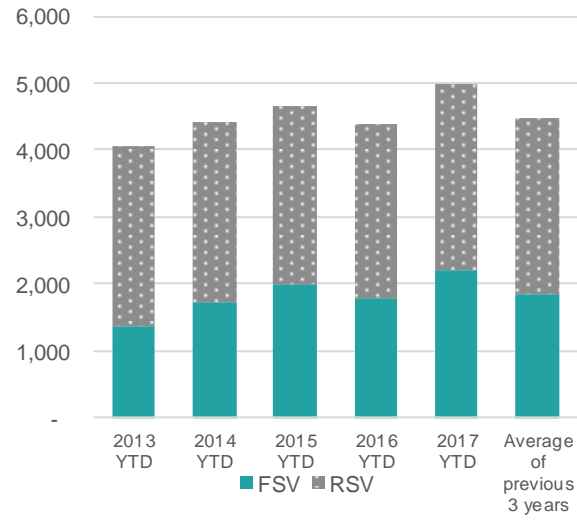


#### In brief

YTD	FSV	RSV	TSV
Visas	2,209	2,776	4,985
Change No.	434	177	611
Change Percent	24%	7%	14%

Changes are from the YTD 2016 to the YTD 2017

#### South East Asia: Cumulative FSV and RSV



#### South East Asia: 2016 total visas

FSV	4,488
RSV	4,470
TSV	8,958

#### South East Asia: TSV by sector (\*)

	2014 YTD	2015 YTD	2016 YTD	2017 YTD	Change Number	Change Percentage
Schools	871	993	916	1,026	110	12%
ITP	364	380	426	455	29	7%
PTE	1,193	1,442	1,253	1,512	259	21%
Universities	1,981	1,829	1,773	1,988	215	12%
Total	4,409	4,644	4,368	4,981	613	14%

#### South East Asia: FSV by sector (\*)

	2014 YTD	2015 YTD	2016 YTD	2017 YTD	Change Number	Change Percentage
Schools	323	351	307	352	45	15%
ITP	135	174	200	210	10	5%
PTE	762	1,001	782	936	154	20%
Universities	489	469	483	710	227	47%
Total	1,709	1,995	1,772	2,208	436	25%

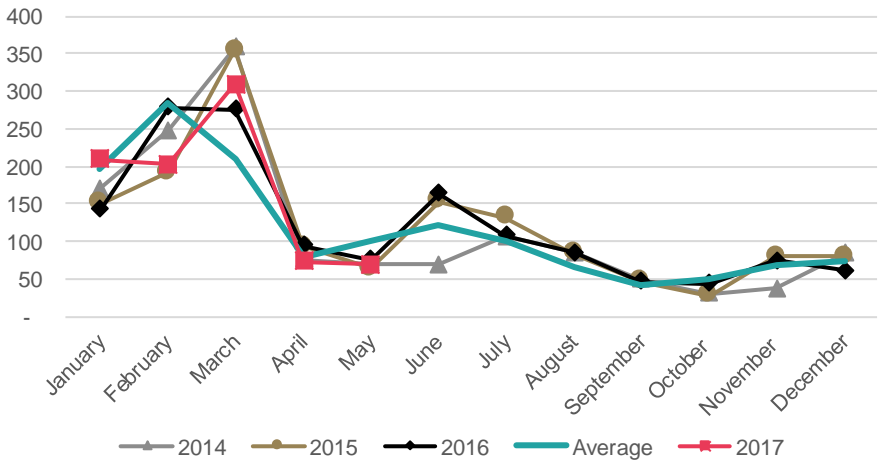
(\*) Please note that numbers by sector may not always add up to the same as the total because sector is not always stated.

#### South East Asia: TSV by region

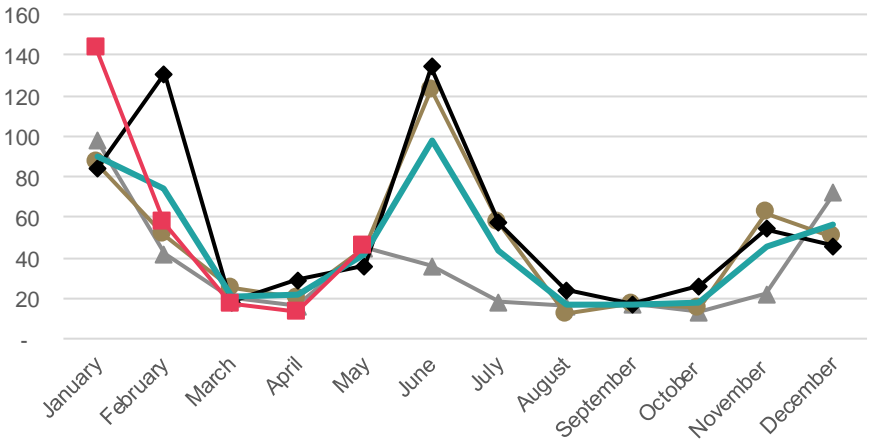
Region	2014 YTD	2015 YTD	2016 YTD	2017 YTD	Change Number	Change Percentage
Auckland	2,199	2,419	2,196	2,644	448	20%
Wellington	549	460	478	578	100	21%
Canterbury	426	473	463	496	33	7%
Otago	456	464	418	425	7	2%
Manawatu	275	302	247	238	-9	-4%
Other	507	531	572	604	32	6%
Total	4,412	4,649	4,374	4,985	611	14%

- TSV for the YTD 2017 are stable (-0%, -3) compared to the YTD 2016.
- FSV have decreased by 7% (-22), which was balanced by an increase in RSV (+3%, +19). Both movements are driven by the universities sector.
- The universities sector has accounted for 76% of TSV for the YTD 2017.
- VSV were 1,684 on 1 June 2017, which is a 12% (+180) increase since the same day in 2016.
- FSV for the university sector should peak in YTD June 2017.

Malaysia: TSV approved in 2014-2017



Malaysia: FSV approved in 2014-2017



In brief

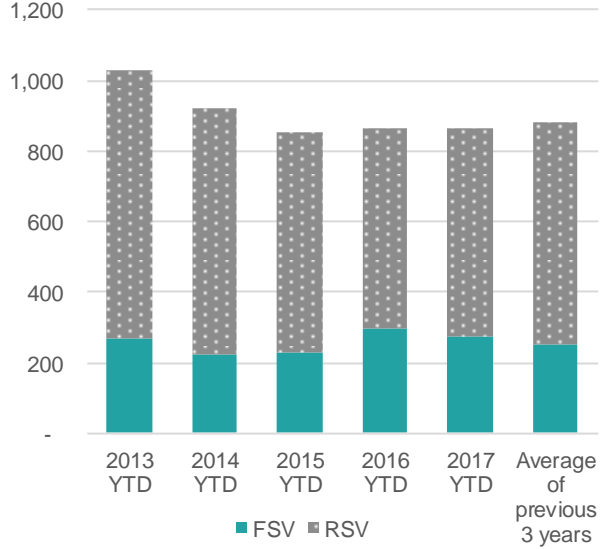
YTD	FSV	RSV	TSV
Visas	276	586	862
Change No.	- 22	19	- 3
Change Percent	-7%	3%	0%

Changes are from the YTD 2016 to the YTD 2017

Malaysia: TSV by sector (\*)

	2014 YTD	2015 YTD	2016 YTD	2017 YTD	Change Number	Change Percentage
Schools	53	55	57	54	-3	-5%
ITP	64	60	65	76	11	17%
PTE	59	65	70	81	11	16%
Universities	745	670	671	651	-20	-3%
Total	921	850	863	862	-1	0%

Malaysia: Cumulative FSV and RSV



Malaysia: FSV by sector (\*)

	2014 YTD	2015 YTD	2016 YTD	2017 YTD	Change Number	Change Percentage
Schools	24	17	20	14	-6	-30%
ITP	18	23	24	28	4	17%
PTE	29	37	34	41	7	21%
Universities	149	149	218	193	-25	-11%
Total	220	226	296	276	-20	-7%

(\*) Please note that numbers by sector may not always add up to the same as the total because sector is not always stated.

Malaysia: TSV by region

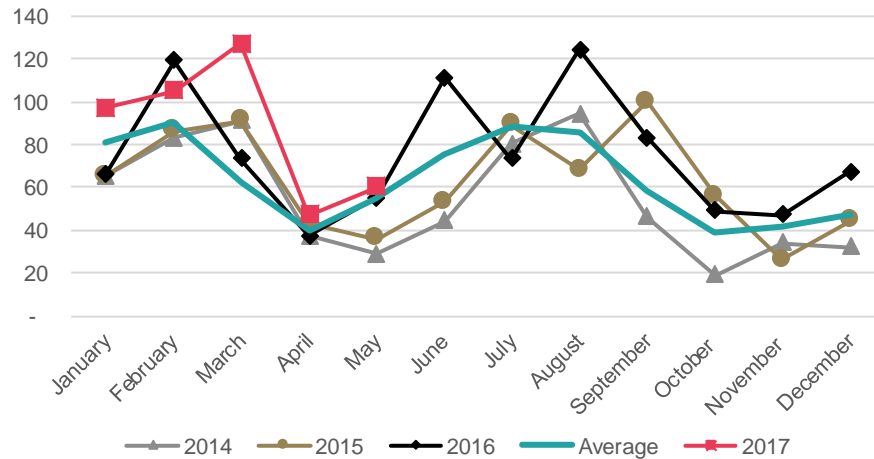
Region	2014 YTD	2015 YTD	2016 YTD	2017 YTD	Change Number	Change Percentage
Auckland	348	342	355	366	11	3%
Otago	228	224	190	186	-4	-2%
Canterbury	116	112	126	130	4	3%
Wellington	97	63	80	65	-15	-19%
Waikato	59	47	62	48	-14	-23%
Other	74	64	52	67	15	29%
Total	922	852	865	862	-3	0%

Malaysia: 2016 Total visas

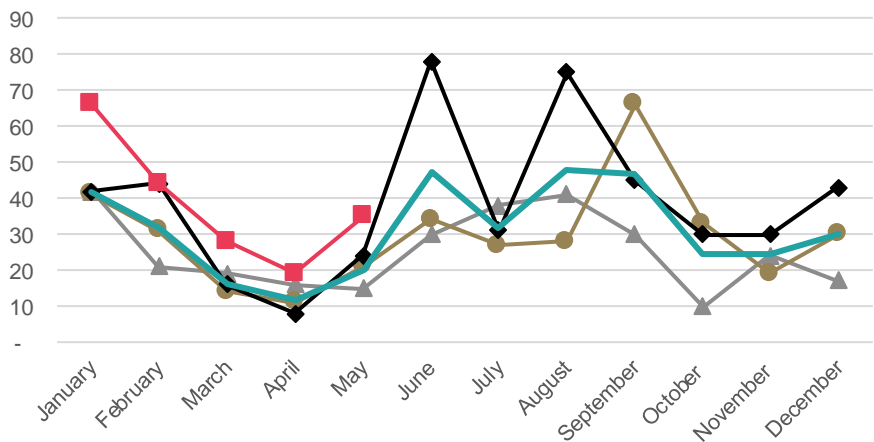
FSV	656
RSV	788
TSV	1,444

- TSV for the YTD 2017 have increased (+25%, +86) compared to the YTD 2016, driven by the university sector (+30%, +53).
- Increases also apply to FSV and RSV.
- FSVs have increased (+43%, +58), attributed to an increase in the universities sector (+83%, +45).
- There were 946 VSV on 1 May 2017, which is 42% (+280) more than the same date in 2016.

Indonesia: TSV approved in 2014-2017



Indonesia: FSV approved in 2014-2017

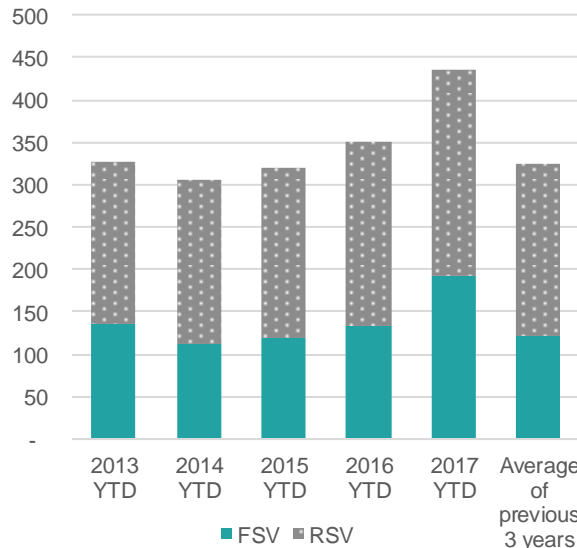


**In brief**

YTD	FSV	RSV	TSV
Visas	192	244	436
Change No.	58	28	86
Change Percent	43%	13%	25%

Changes are from the YTD 2016 to the YTD 2017

Indonesia: Cumulative FSV and RSV



Indonesia: 2016 Total visas

FSV	466
RSV	438
TSV	904

Indonesia: TSV by sector (\*)

	2014 YTD	2015 YTD	2016 YTD	2017 YTD	Change Number	Change Percentage
Schools	18	21	27	26	-1	-4%
ITP	23	34	57	58	1	2%
PTE	81	79	88	121	33	38%
Universities	183	187	178	231	53	30%
Total	305	321	350	436	86	25%

Indonesia: FSV by sector (\*)

	2014 YTD	2015 YTD	2016 YTD	2017 YTD	Change Number	Change Percentage
Schools	8	8	8	11	3	38%
ITP	8	20	30	26	-4	-13%
PTE	38	29	42	56	14	33%
Universities	59	61	54	99	45	83%
Total	113	118	134	192	58	43%

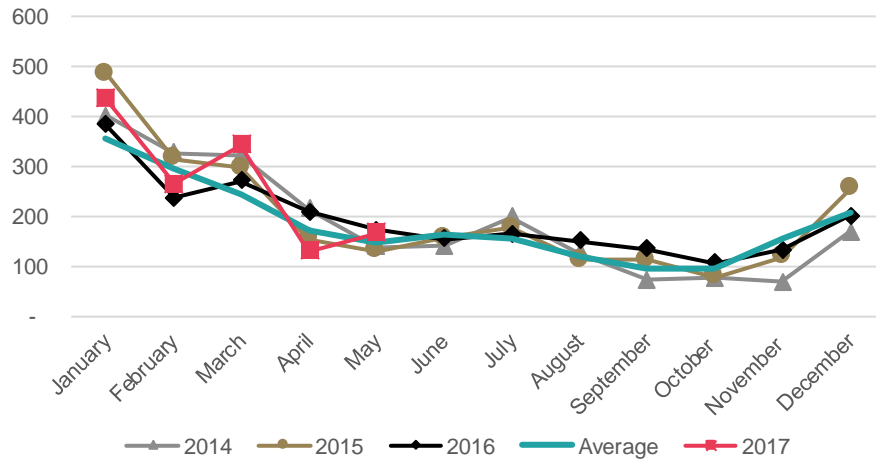
(\*) Please note that numbers by sector may not always add up to the same as the total because sector is not always stated.

Indonesia: TSV by region

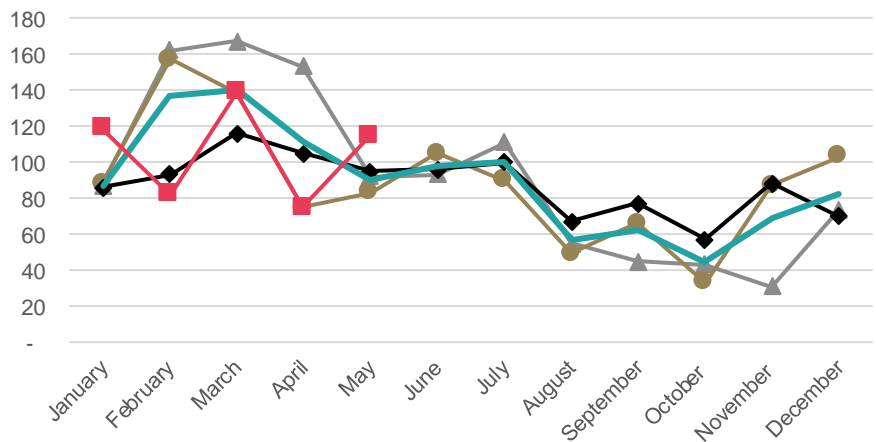
Region	2014 YTD	2015 YTD	2016 YTD	2017 YTD	Change Number	Change Percentage
Auckland	178	183	176	227	51	29%
Wellington	38	41	43	55	12	28%
Canterbury	32	31	29	39	10	34%
Manawatu	24	27	36	43	7	19%
Otago	15	13	15	30	15	100%
Other	18	26	51	42	-9	-18%
Total	305	321	350	436	86	25%

- TSV for Thailand for the YTD 2017 have increased by 5 % (+68) compared to the YTD 2016 with schools accounting for almost half (47%) of Thailand TSV.
- The PTE sector has increased in TSV for the YTD 2017 (+22%, +82). Most of the TSV increase has been in the Auckland region.
- VSV for 1 June 2017 were 2,092, a 3% (+57) increase from the same day in 2016.
- TSV are expected to remain stable for YTD June 2017.

**Thailand: TSV approved in 2014-2017**



**Thailand: FSV approved in 2014-2017**



**In brief**

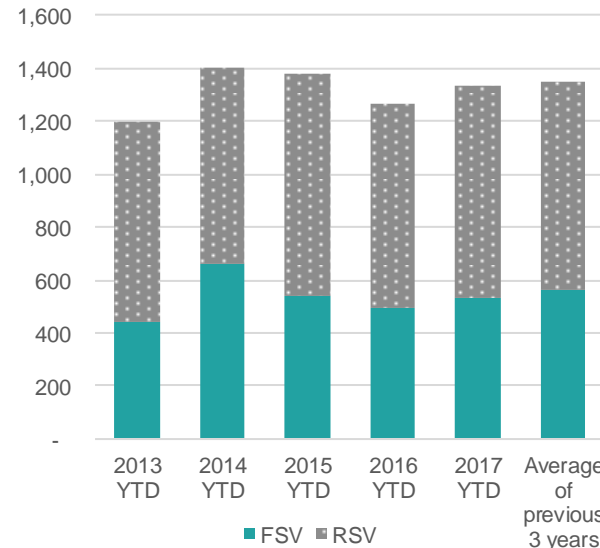
YTD	FSV	RSV	TSV
Visas	530	804	1,334
Change No.	35	33	68
Change Percent	7%	4%	5%

Changes are from the YTD 2016 to the YTD 2017

**Thailand: TSV by sector (\*)**

	2014 YTD	2015 YTD	2016 YTD	2017 YTD	Change Number	Change Percentage
Schools	635	737	620	622	2	0%
ITP	68	52	58	29	-29	-50%
PTE	434	363	366	448	82	22%
Universities	262	225	222	235	13	6%
Total	1,399	1,377	1,266	1,334	68	5%

**Thailand: Cumulative FSV and RSV**



**Thailand: FSV by sector (\*)**

	2014 YTD	2015 YTD	2016 YTD	2017 YTD	Change Number	Change Percentage
Schools	242	268	204	189	-15	-7%
ITP	22	11	16	2	-14	-88%
PTE	323	228	244	291	47	19%
Universities	74	35	31	48	17	55%
Total	661	542	495	530	35	7%

(\* Please note that numbers by sector may not always add up to the same as the total because sector is not always stated.

**Thailand: TSV by region**

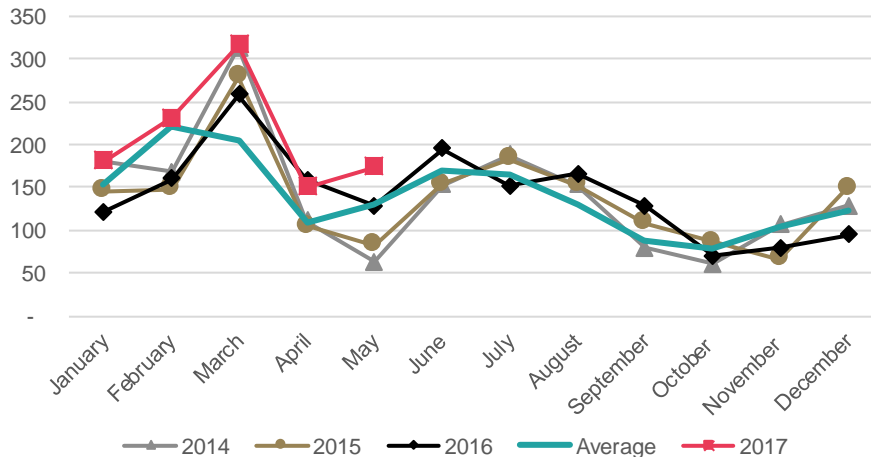
Region	2014 YTD	2015 YTD	2016 YTD	2017 YTD	Change Number	Change Percentage
Auckland	693	669	631	740	109	17%
Canterbury	164	171	169	163	-6	-4%
Wellington	105	85	93	93	0	0%
Otago	86	98	87	80	-7	-8%
Manawatu	95	126	56	44	-12	-21%
Other	256	228	230	214	-16	-7%
Total	1,399	1,377	1,266	1,334	68	5%

**Thailand: 2016 Total visas**

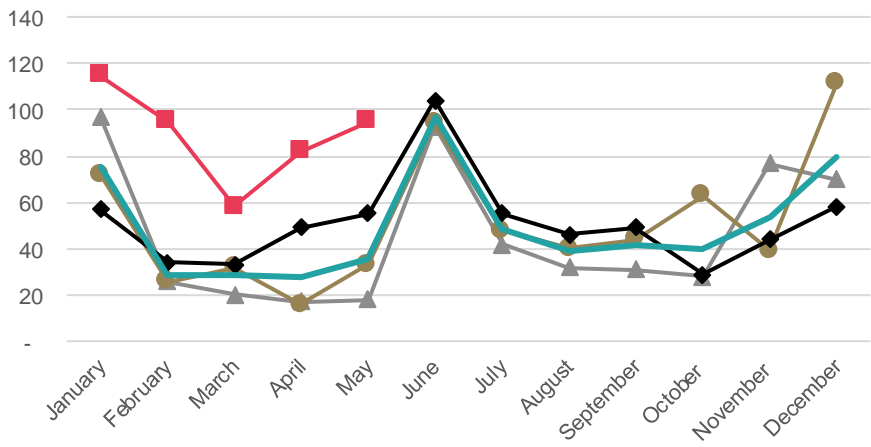
FSV	1,050
RSV	1,250
TSV	2,300

- TSV for Viet Nam have increased by 27% (+226) for the YTD 2017 when compared to the YTD 2016.
- FSV have almost doubled (+95%, +217), driven by the university sector (+191%, +122). Most of this increase was in Auckland and Wellington.
- FSV have increased for all of 2017 compared to previous years and the 3-year average.
- VSV for 1 June 2017 were 1,724, an increase for 15% (+224) since the same day in 2016.

**Viet Nam: TSV approved in 2014-2017**



**Viet Nam: FSV approved in 2014-2017**



**In brief**

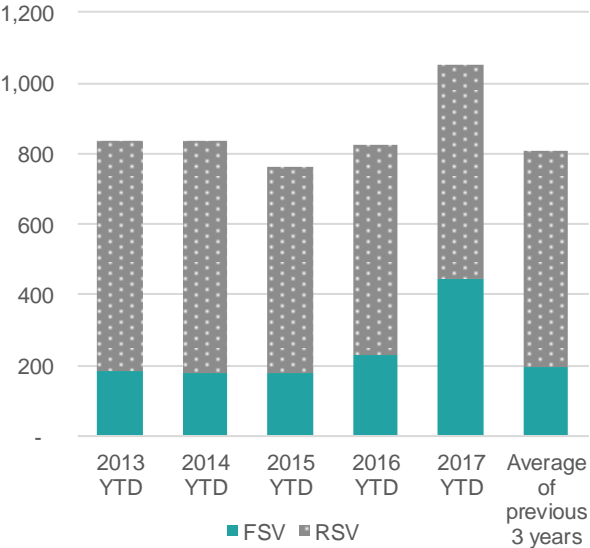
YTD	FSV	RSV	TSV
Visas	445	606	1,051
Change No.	217	9	226
Change Percent	95%	2%	27%

Changes are from the YTD 2016 to the YTD 2017

**Viet Nam: TSV by sector (\*)**

	2014 YTD	2015 YTD	2016 YTD	2017 YTD	Change Number	Change Percentage
Schools	99	100	122	212	90	74%
ITP	94	88	100	116	16	16%
PTE	204	185	243	286	43	18%
Universities	437	388	360	434	74	21%
<b>Total</b>	<b>834</b>	<b>761</b>	<b>825</b>	<b>1,048</b>	<b>223</b>	<b>27%</b>

**Viet Nam: Cumulative FSV and RSV**



**Viet Nam: FSV by sector (\*)**

	2014 YTD	2015 YTD	2016 YTD	2017 YTD	Change Number	Change Percentage
Schools	21	29	45	98	53	118%
ITP	24	19	32	39	7	22%
PTE	49	43	87	122	35	40%
Universities	84	88	64	186	122	191%
<b>Total</b>	<b>178</b>	<b>179</b>	<b>228</b>	<b>445</b>	<b>217</b>	<b>95%</b>

(\*) Please note that numbers by sector may not always add up to the same as the total because sector is not always stated.

**Viet Nam: TSV by region**

Region	2014 YTD	2015 YTD	2016 YTD	2017 YTD	Change Number	Change Percentage
Auckland	415	377	441	573	132	30%
Wellington	202	172	159	217	58	36%
Manawatu	66	66	84	74	-10	-12%
Canterbury	55	49	43	52	9	21%
Otago	28	32	26	28	2	8%
Other	68	65	72	107	35	49%
<b>Total</b>	<b>834</b>	<b>761</b>	<b>825</b>	<b>1,051</b>	<b>226</b>	<b>27%</b>

**Viet Nam: 2016 Total visas**

FSV	613
RSV	1,093
<b>TSV</b>	<b>1,706</b>

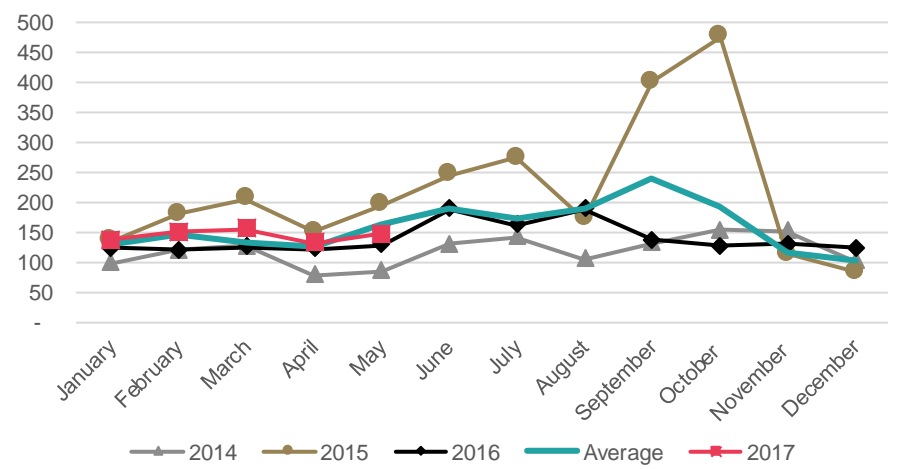


# Philippines

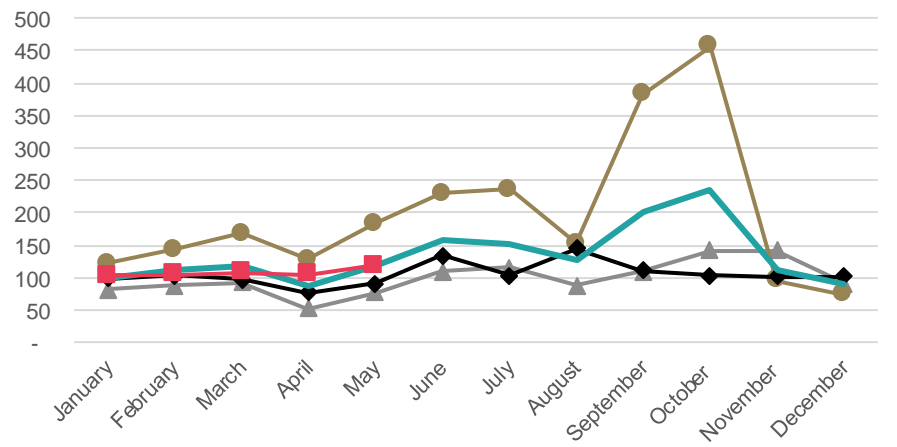
## May 2017

- TSV for the Philippines have increased by 17% (+104) in the YTD 2017 compared to the YTD 2016.
- Most of the TSV increase is from FSV for the PTE (+17%, +71) sector.
- FSV have increased across most sectors, predominantly within the PTE sector (+16%, +55), suggesting increased Filipino students in the latter half of the year.
- VSV on June 1 2017 are 1,815, a decrease of 16% (-336) from the same date in 2016, due to a decline in VSV for PTE students (-34%, -549).

**Philippines: TSV approved in 2014-2017**



**Philippines: FSV approved in 2014-2017**



**In brief**

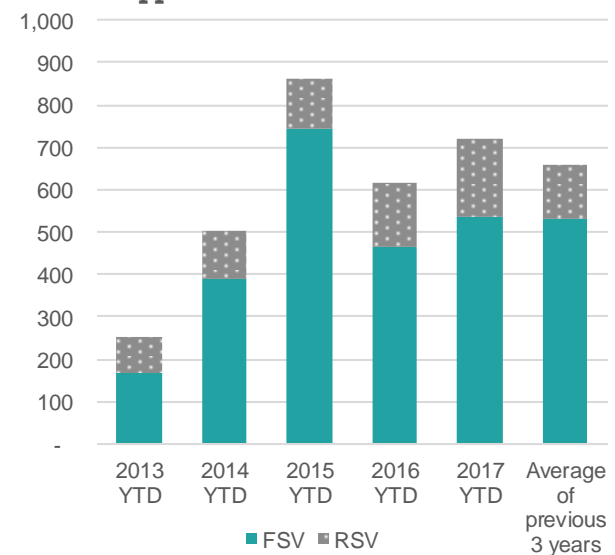
YTD	FSV	RSV	TSV
Visas	537	182	719
Change No.	71	33	104
Change Percent	15%	22%	17%

Changes are from the YTD 2016 to the YTD 2017

**Philippines: TSV by sector (\*)**

	2014 YTD	2015 YTD	2016 YTD	2017 YTD	Change Number	Change Percentage
Schools	21	24	31	24	-7	-23%
ITP	78	116	114	138	24	21%
PTE	362	676	414	485	71	17%
Universities	42	42	52	71	19	37%
Total	503	858	611	718	107	18%

**Philippines: Cumulative FSV and RSV**



**Philippines: FSV by sector (\*)**

	2014 YTD	2015 YTD	2016 YTD	2017 YTD	Change Number	Change Percentage
Schools	9	10	10	5	-5	-50%
ITP	48	88	87	102	15	17%
PTE	310	620	338	393	55	16%
Universities	21	22	30	36	6	20%
Total	388	740	465	536	71	15%

(\*) Please note that numbers by sector may not always add up to the same as the total because sector is not always stated.

**Philippines: TSV by region**

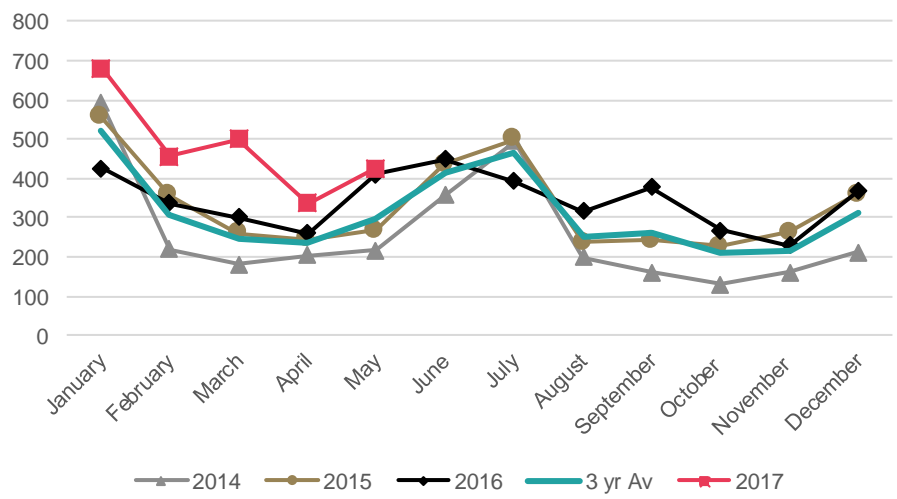
Region	2014 YTD	2015 YTD	2016 YTD	2017 YTD	Change Number	Change Percentage
Auckland	396	644	401	476	75	19%
Bay of Plenty	31	72	68	72	4	6%
Canterbury	19	67	62	65	3	5%
Wellington	14	26	25	38	13	52%
Waikato	15	19	16	14	-2	-13%
Other	30	33	43	54	11	26%
Total	505	861	615	719	104	17%

**Philippines: 2016 Total visas**

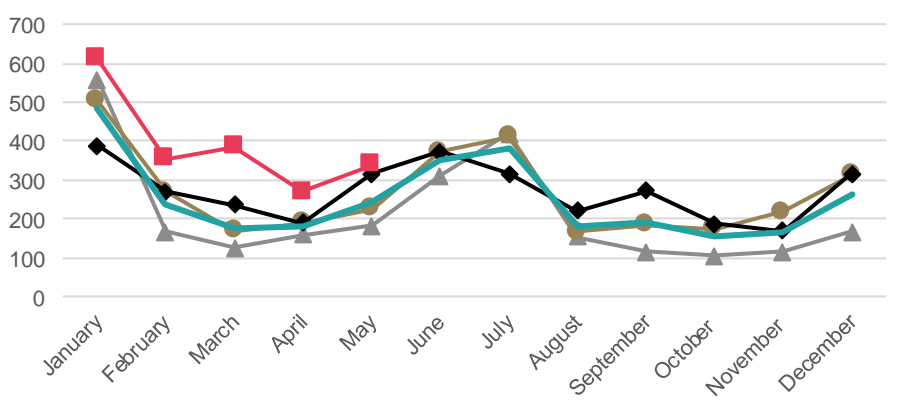
FSV	1,264
RSV	403
TSV	1,667

- TSV have increased by 39% (+ 668) in the YTD 2017 compared to the YTD 2016. All of the focus markets (Brazil, Chile, Colombia) for Latin America have seen increases of 100 or more students for the 2017 YTD compared to the 2016 YTD.
- FSV for all sectors for the YTD have increased, especially schools (+72%, +158) and PTE (+38%, +378).
- VSV on May 1 2017 are 3,230, an increase of 29% (+725) from the same date in 2016.

Latin America: TSV approved in 2014-2017



Latin America: FSVs approved in 2014-2017

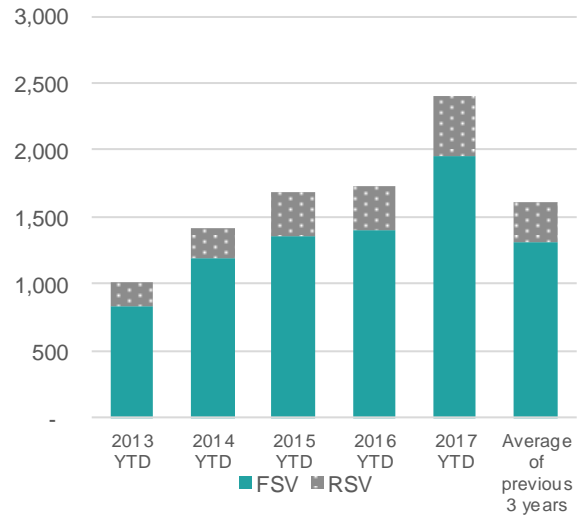


In brief

YTD	FSV	RSV	TSV
Visas	1,958	443	2,401
Change No.	558	110	668
Change Percent	40%	33%	39%

Changes are from the YTD 2016 to the YTD 2017

Latin America: Cumulative FSV and RSV



Latin America: 2016 total visas

FSV	3,252
RSV	881
TSV	4,133

Latin America: TSV by sector (\*)

	2014 YTD	2015 YTD	2016 YTD	2017 YTD	Change Number	Change Percentage
Schools	492	297	251	401	150	60%
IITP	39	59	71	80	9	13%
PTE	646	1,020	1,208	1,693	485	40%
Universities	179	272	171	207	36	21%
Total	1,356	1,648	1,701	2,381	680	40%

Latin America: FSV by sector (\*)

	2014 YTD	2015 YTD	2016 YTD	2017 YTD	Change Number	Change Percentage
Schools	457	270	220	378	158	72%
IITP	22	31	41	51	10	24%
PTE	551	855	1,006	1,384	378	38%
Universities	104	166	101	125	24	24%
Total	1,134	1,322	1,368	1,938	570	42%

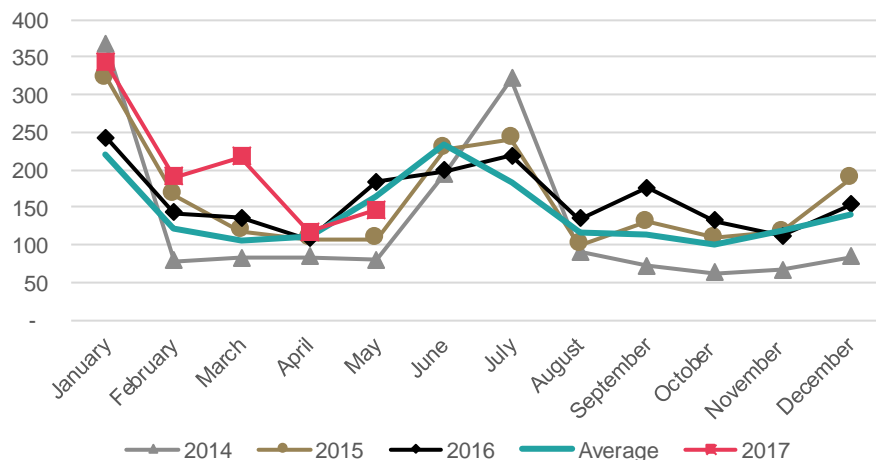
(\*) Please note that numbers by sector may not always add up to the same as the total because sector is not always stated.

Latin America: TSV by region

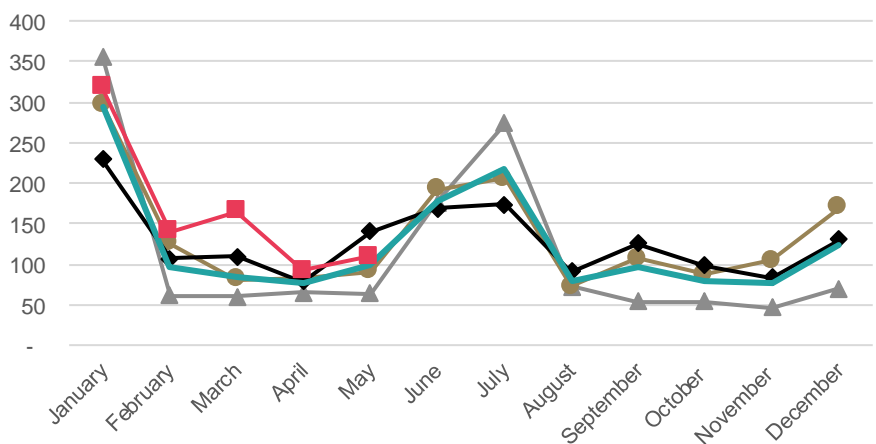
Region	2014 YTD	2015 YTD	2016 YTD	2017 YTD	Change Number	Change Percentage
Auckland	841	1,137	1,221	1,645	424	35%
Southland	38	102	95	199	104	109%
Canterbury	162	97	103	162	59	57%
Wellington	133	118	76	143	67	88%
Bay of Plenty	36	68	31	67	36	116%
Other	204	163	207	185	-22	-11%
Total	1,414	1,685	1,733	2,401	668	39%

- TSV for the YTD 2017 are up 25% (+201) compared to the YTD 2016.
- An increase in FSV for the PTE (+19%, +89) and schools (+45%, +67) sectors have accounted for an overall FSV increase of 24% (+160).
- With the exception of slight rises in March 2017, YTD 2017 trend lines for both TSV and FSV remain largely consistent with previous years.
- VSV for 1 June 2017 were 1,332 an 18% (+ 201) increase from the same date in 2016.

**Brazil: TSV approved in 2014-2017**



**Brazil: FSV approved in 2014-2017**



**In brief**

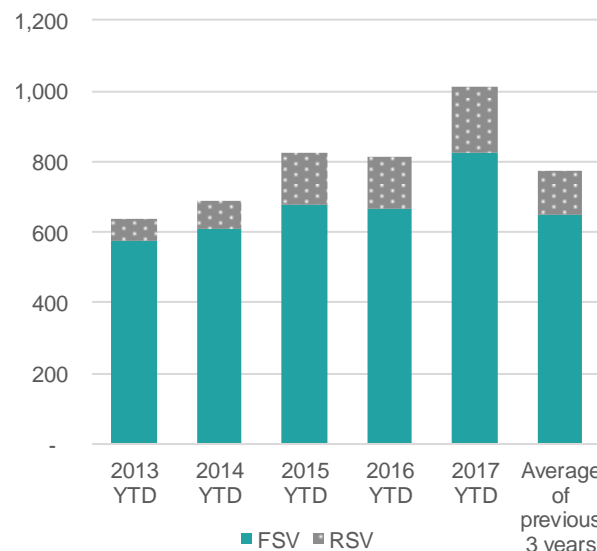
YTD	FSV	RSV	TSV
Visas	825	187	1,012
Change No.	160	41	201
Change Percent	24%	28%	25%

Changes are from the YTD 2016 to the YTD 2017

**Brazil: TSV by sector (\*)**

	2014 YTD	2015 YTD	2016 YTD	2017 YTD	Change Number	Change Percentage
Schools	315	187	164	227	63	38%
ITP	18	22	27	32	5	19%
PTE	261	466	570	698	128	22%
Universities	76	134	39	51	12	31%
Total	670	809	800	1,008	208	26%

**Brazil: Cumulative FSV and RSV**



**Brazil: FSV by sector (\*)**

	2014 YTD	2015 YTD	2016 YTD	2017 YTD	Change Number	Change Percentage
Schools	304	176	150	217	67	45%
ITP	9	12	15	24	9	60%
PTE	225	399	471	560	89	19%
Universities	51	77	18	20	2	11%
Total	589	664	654	821	167	26%

(\*) Please note that numbers by sector may not always add up to the same as the total because sector is not always stated.

**Brazil: TSV by region**

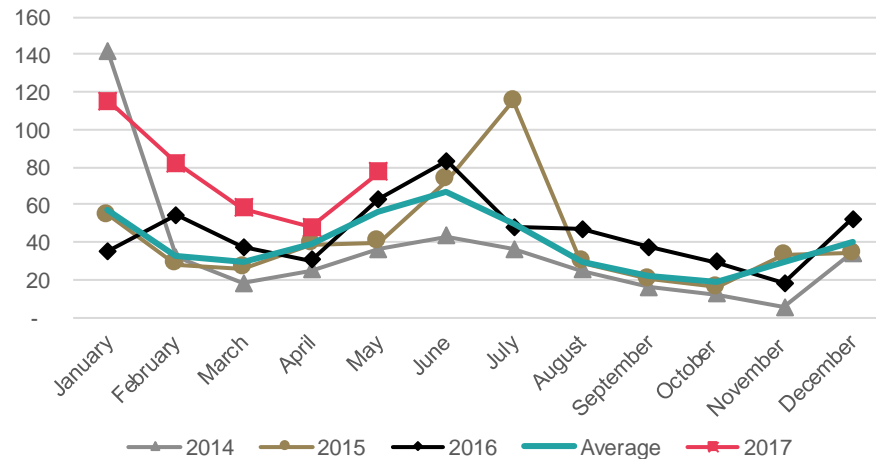
Region	2014 YTD	2015 YTD	2016 YTD	2017 YTD	Change Number	Change Percentage
Auckland	366	518	557	660	103	18%
Canterbury	66	49	52	89	37	71%
Wellington	68	53	36	48	12	33%
Southland	26	69	44	84	40	91%
Bay of Plenty	25	45	16	41	25	156%
Other	138	88	106	90	-16	-15%
Total	689	822	811	1,012	201	25%

**Brazil: 2016 Total visas**

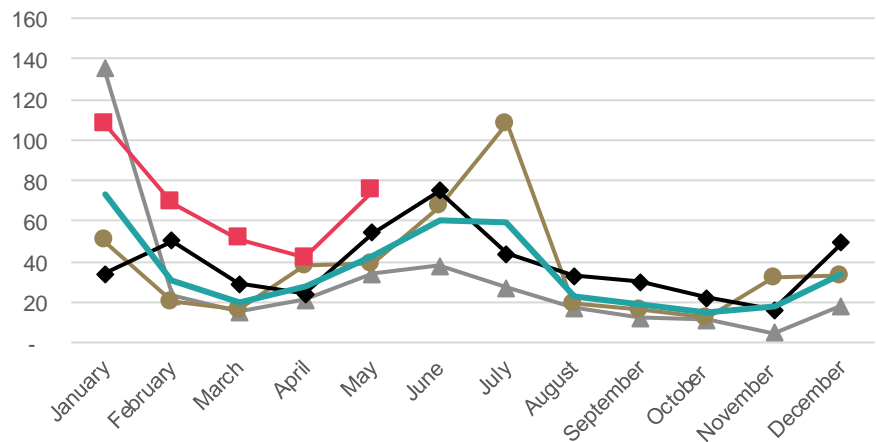
FSV	1,537
RSV	399
TSV	1,936

- TSV are up 74%(+161) for the 2017 YTD compared to the YTD 2016. FSV have also increased by 81% (+154) compared to YTD 2016.
- YTD 2017 FSV and TSV have sustained higher levels of approvals compared to past years. This can be attributed to the Penguins without Borders programme which saw a 230% increase in FSV for the YTD 2017 compared to the YTD 2016.
- VSV were 489 on 1 June 2017, a 58% (+179) increase on the same day in 2016.

**Chile: TSV approved in 2014-2017**



**Chile: FSV approved in 2014-2017**



**In brief**

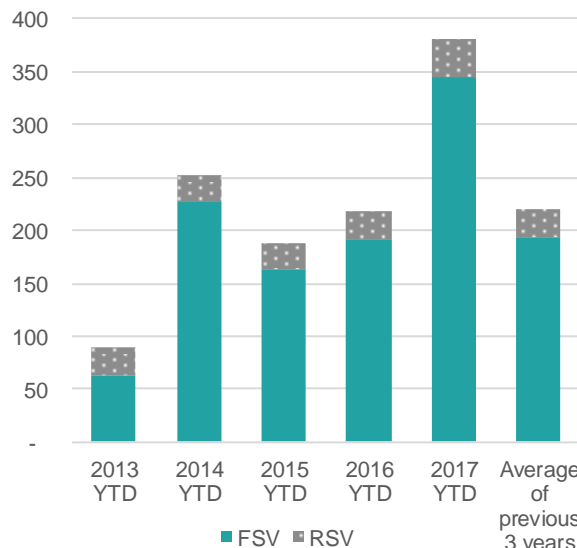
YTD	FSV	RSV	TSV
Visas	345	35	380
Change No.	154	7	161
Change Percent	81%	25%	74%

Changes are from the YTD 2016 to the YTD 2017

**Chile: TSV by sector (\*)**

	2014 YTD	2015 YTD	2016 YTD	2017 YTD	Change Number	Change Percentage
Schools	126	44	36	114	78	217%
ITP	6	9	10	15	5	50%
PTE	94	101	140	226	86	61%
Universities	19	24	27	21	-6	-22%
Total	245	178	213	376	163	77%

**Chile: Cumulative FSV and RSV**



**Chile: FSV by sector (\*)**

	2014 YTD	2015 YTD	2016 YTD	2017 YTD	Change Number	Change Percentage
Schools	120	40	33	109	76	230%
ITP	4	1	6	4	-2	-33%
PTE	88	97	127	213	86	68%
Universities	9	16	19	15	-4	-21%
Total	221	154	185	341	156	84%

(\*) Please note that numbers by sector may not always add up to the same as the total because sector is not always stated.

**Chile: TSV by region**

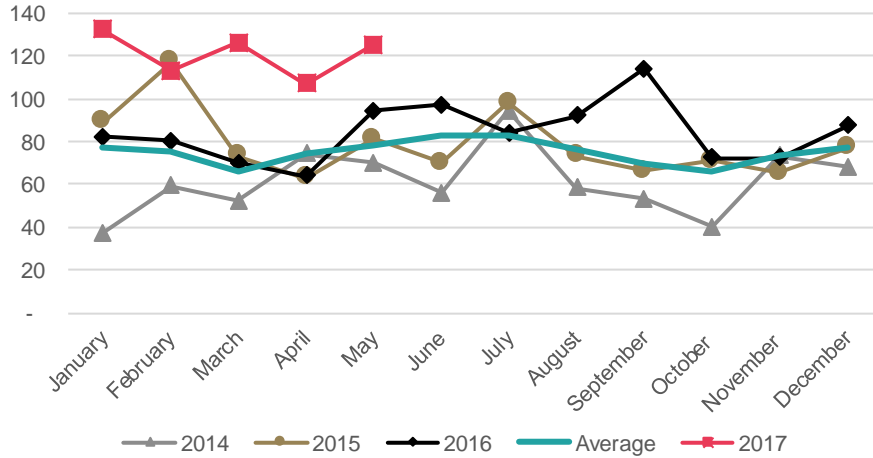
Region	2014 YTD	2015 YTD	2016 YTD	2017 YTD	Change Number	Change Percentage
Auckland	141	114	138	239	101	73%
Wellington	38	11	10	34	24	240%
Canterbury	42	8	5	33	28	560%
Bay of Plenty	7	19	13	13	0	0%
Southland	5	8	10	28	18	180%
Other	19	27	43	33	-10	-23%
Total	252	187	219	380	161	74%

**Chile: 2016 Total visas**

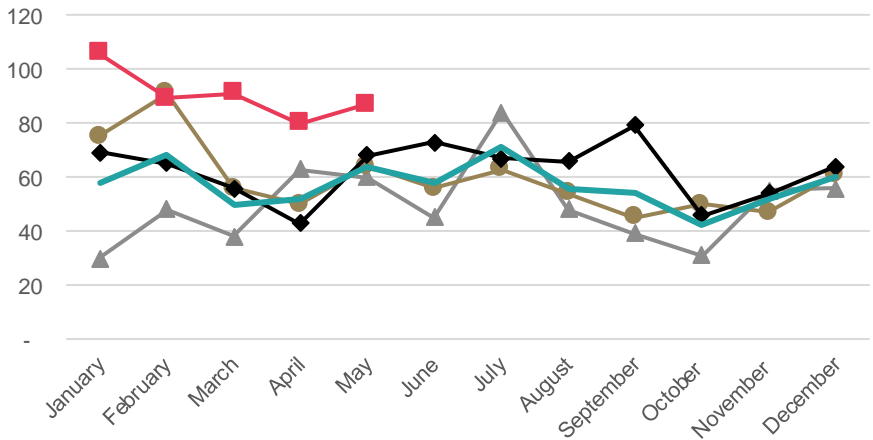
FSV	460
RSV	73
TSV	533

- TSV increased by 55% (+213) for the YTD 2017. FSV increased by 50% (+152) for YTD 2017.
- PTE enrolments account for the majority of FSV (84%) and TSV (89%) for YTD May 2017.
- VSV were 818 on 1 June 2017, an increase of 35% (+212) compared to the same day in 2016. This is the highest number of VSV post 2014.

Colombia: TSV approved in 2014-2017



Colombia: FSV approved in 2014-2017



In brief

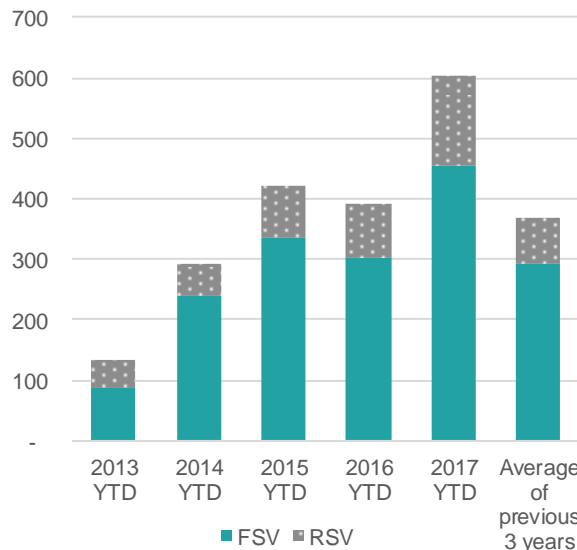
YTD	FSV	RSV	TSV
Visas	453	150	603
Change No.	152	61	213
Change Percent	50%	69%	55%

Changes are from the YTD 2016 to the YTD 2017

Colombia: TSV by sector (\*)

	2014 YTD	2015 YTD	2016 YTD	2017 YTD	Change Number	Change Percentage
Schools	11	15	7	8	1	14%
ITP	5	13	15	17	2	13%
PTE	222	352	328	517	189	58%
Universities	37	43	40	61	21	53%
Total	275	423	390	603	213	55%

Colombia: Cumulative FSV and RSV



Colombia: FSV by sector (\*)

	2014 YTD	2015 YTD	2016 YTD	2017 YTD	Change Number	Change Percentage
Schools	10	15	5	8	3	60%
ITP	3	6	6	10	4	67%
PTE	188	286	264	391	127	48%
Universities	22	29	26	44	18	69%
Total	223	336	301	453	152	50%

(\*) Please note that numbers by sector may not always add up to the same as the total because sector is not always stated.

Colombia: TSV by region

Region	2014 YTD	2015 YTD	2016 YTD	2017 YTD	Change Number	Change Percentage
Auckland	218	353	319	477	158	50%
Canterbury	38	25	20	23	3	15%
Wellington	15	24	17	42	25	147%
Southland	6	16	22	45	23	105%
Waikato	6	2	6	6	0	0%
Other	9	3	6	10	4	67%
Total	292	423	390	603	213	55%

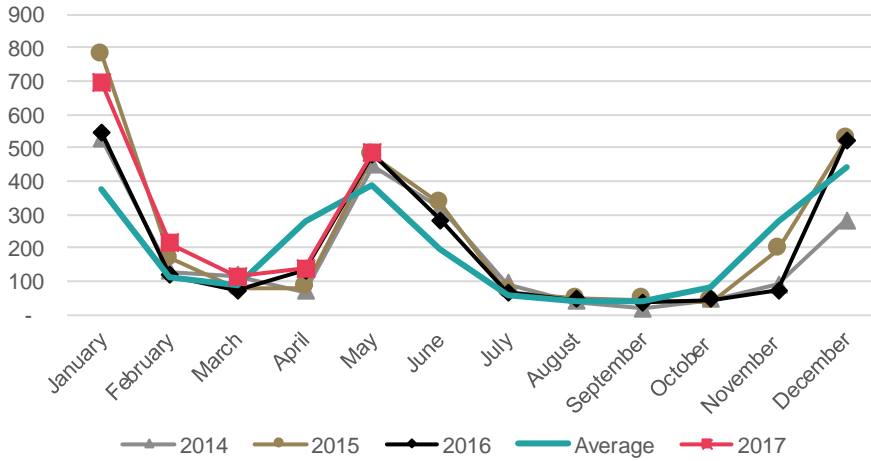
Colombia: 2016 Total visas

FSV	750
RSV	258
TSV	1,008

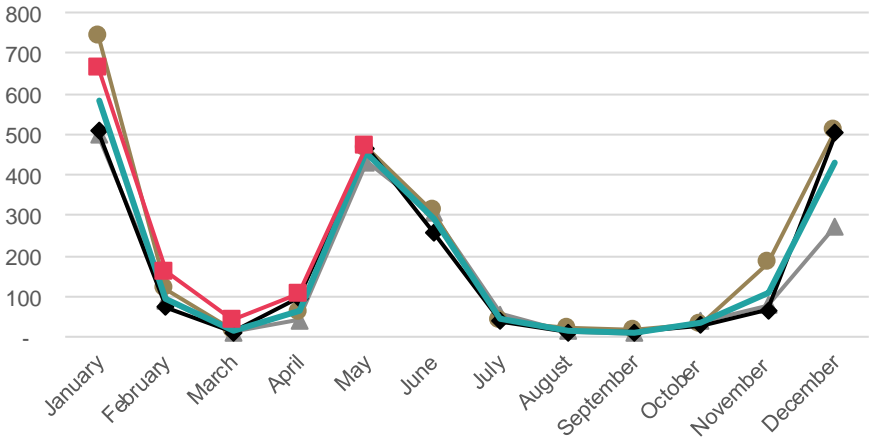


- TSV have increased by 22% (+300) for the YTD 2017 compared to YTD 2016.
- FSV have increased by 25% (+287) dominated by the universities sector (+24%, +266).
- VSV were 2,547 on 1 June 2017, which was an increase of 13% (+293) compared to the same day in 2016.

USA: TSV approved in 2014-2017



USA: FSV approved in 2014-2017



In brief

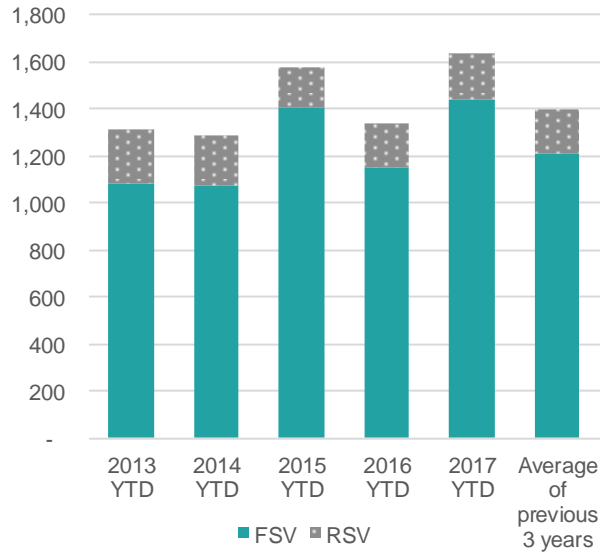
YTD	FSV	RSV	TSV
Visas	1,440	199	1,639
Change No.	287	13	300
Change Percent	25%	7%	22%

Changes are from the YTD 2016 to the YTD 2017

USA: TSV by sector (\*)

	2014 YTD	2015 YTD	2016 YTD	2017 YTD	Change Number	Change Percentage
Schools	35	33	29	36	7	24%
ITP	25	34	24	22	-2	-8%
PTE	32	26	25	41	16	64%
Universities	1,184	1,473	1,253	1,533	280	22%
Total	1,276	1,566	1,331	1,632	301	23%

USA: Cumulative FSV and RSV



USA: FSV by sector (\*)

	2014 YTD	2015 YTD	2016 YTD	2017 YTD	Change Number	Change Percentage
Schools	16	20	12	19	7	58%
ITP	13	26	14	15	1	7%
PTE	24	19	19	33	14	74%
Universities	1,009	1,332	1,100	1,366	266	24%
Total	1,062	1,397	1,145	1,433	288	25%

(\*) Please note that numbers by sector may not always add up to the same as the total because sector is not always stated.

USA: TSV by region

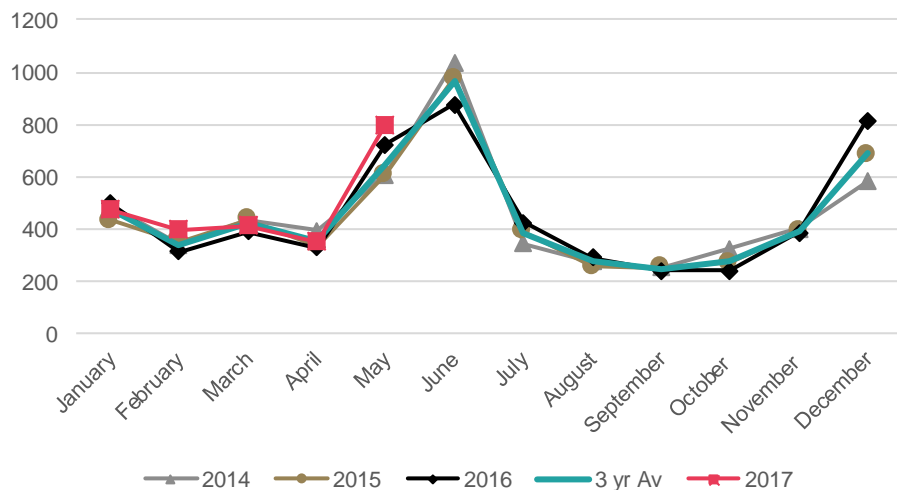
Region	2014 YTD	2015 YTD	2016 YTD	2017 YTD	Change Number	Change Percentage
Auckland	397	465	404	563	159	39%
Otago	362	458	403	492	89	22%
Wellington	197	255	221	252	31	14%
Canterbury	185	234	190	194	4	2%
Manawatu	58	93	54	67	13	24%
Other	86	70	67	71	4	6%
Total	1,285	1,575	1,339	1,639	300	22%

USA: 2016 Total visas

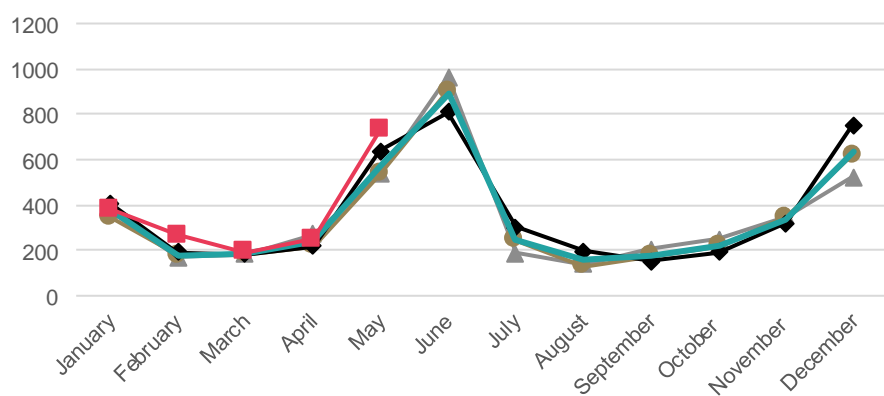
FSV	2,071
RSV	326
TSV	2,397

- TSV for the YTD 2017 have increased by 8% (+183) compared to the YTD 2016. Growth continues to be underpinned by FSV for the universities (+14%, +87) and schools (+19%, +99) sectors.
- FSV for Italy have increased by 63% (+59) for the YTD, which was driven by increased secondary school FSV.
- FSV and TSV are expected to peak in June 2017.
- VSV for Europe have increased by 11% (+492) for 1 June 2017 when compared with the same day in 2016 to reach 5,134.

Europe: TSV approved in 2014-2017



Europe: FSVs approved in 2014-2017



In brief

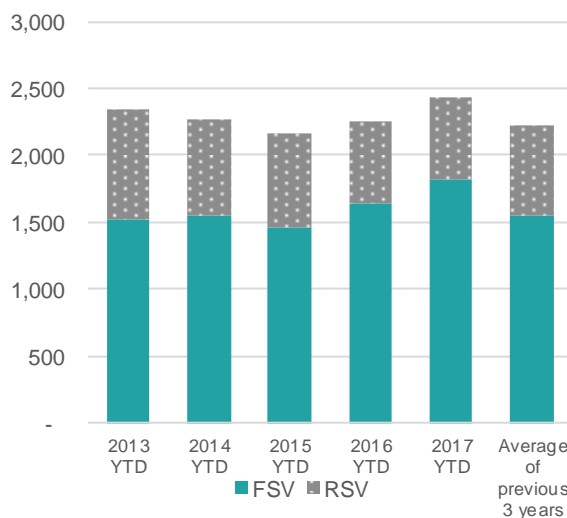
YTD	FSV	RSV	TSV
Visas	1,820	618	2,438
Change No.	175	8	183
Change Percent	11%	1%	8%

Changes are from the YTD 2016 to the YTD 2017

Europe: TSV by sector (\*)

	2014 YTD	2015 YTD	2016 YTD	2017 YTD	Change Number	Change Percentage
Schools	724	539	636	735	99	16%
ITP	206	212	173	201	28	16%
PTE	449	476	486	474	-12	-2%
Universities	854	893	905	992	87	10%
Total	2,233	2,120	2,200	2,402	202	9%

Europe: Cumulative FSV and RSV



Europe: 2016 total visas

FSV	4,377
RSV	1,154
TSV	5,531

Europe: FSV by sector (\*)

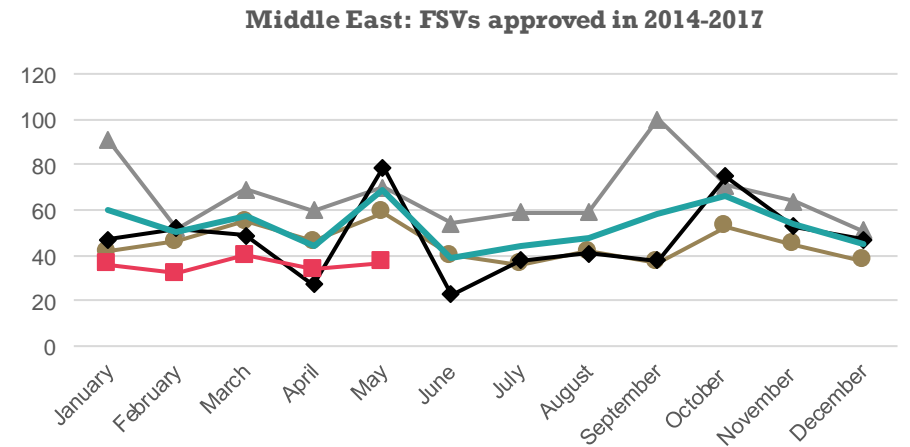
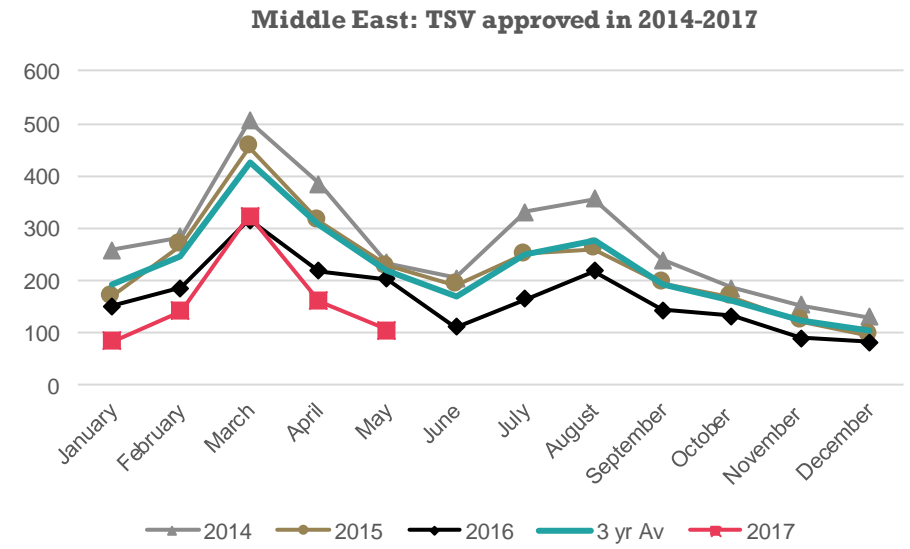
	2014 YTD	2015 YTD	2016 YTD	2017 YTD	Change Number	Change Percentage
Schools	589	413	523	622	99	19%
ITP	125	120	111	128	17	15%
PTE	324	327	349	340	-9	-3%
Universities	481	559	607	694	87	14%
Total	1,519	1,419	1,590	1,784	194	12%

(\*) Please note that numbers by sector may not always add up to the same as the total because sector is not always stated.

Europe: TSV by region

Region	2014 YTD	2015 YTD	2016 YTD	2017 YTD	Change Number	Change Percentage
Auckland	1,038	960	970	1,054	84	9%
Wellington	216	206	217	265	48	22%
Otago	191	194	223	257	34	15%
Canterbury	214	203	220	232	12	5%
Waikato	185	199	177	181	4	2%
Other	417	405	448	449	1	0%
Total	2,261	2,167	2,255	2,438	183	8%

- TSV for YTD 2017 have decreased by 24% (-257) compared to the YTD 2016.
- TSV and FSV for all sectors have decreased for the YTD 2017, almost entirely the result of continued declines in the Saudi Arabian market. TSV and FSV are expected to continue declining throughout 2017.
- VSV for the Middle East are at 1,503, a 8%(-134) decrease for 1 June 2017 compared to the same day in 2016.

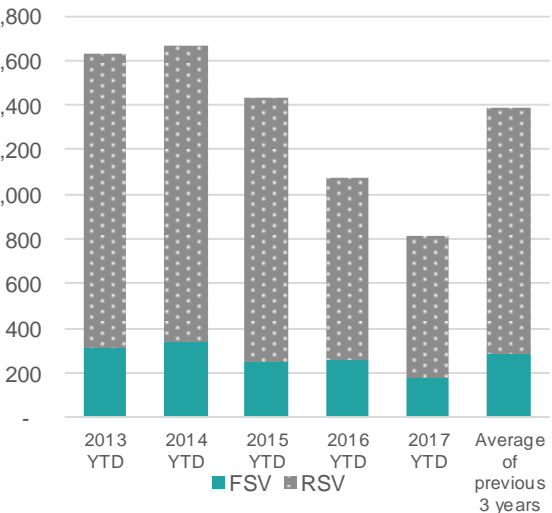


### In brief

YTD	FSV	RSV	TSV
Visas	179	636	815
Change No.	- 75	- 182	- 257
Change Percent	-30%	-22%	-24%

Changes are from the YTD 2016 to the YTD 2017

### Middle East: Cumulative FSV and RSV



### Middle East: 2016 total visas

FSV	569
RSV	1,448
TSV	2,017

### Middle East: TSV by sector (\*)

	2014 YTD	2015 YTD	2016 YTD	2017 YTD	Change Number	Change Percentage
Schools	67	72	66	48	-18	-27%
ITP	274	215	127	113	-14	-11%
PTE	442	387	266	128	-138	-52%
Universities	875	749	612	526	-86	-14%
Total	1,658	1,423	1,071	815	-256	-24%

### Middle East: FSV by sector (\*)

	2014 YTD	2015 YTD	2016 YTD	2017 YTD	Change Number	Change Percentage
Schools	18	17	11	10	-1	-9%
ITP	50	13	8	13	5	63%
PTE	130	128	136	87	-49	-36%
Universities	138	81	99	69	-30	-30%
Total	336	239	254	179	-75	-30%

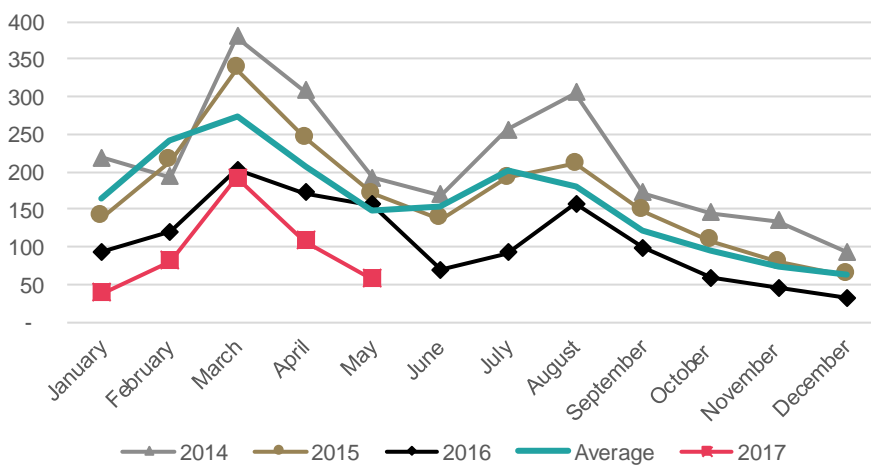
(\*) Please note that numbers by sector may not always add up to the same as the total because sector is not always stated.

### Middle East: TSV by region

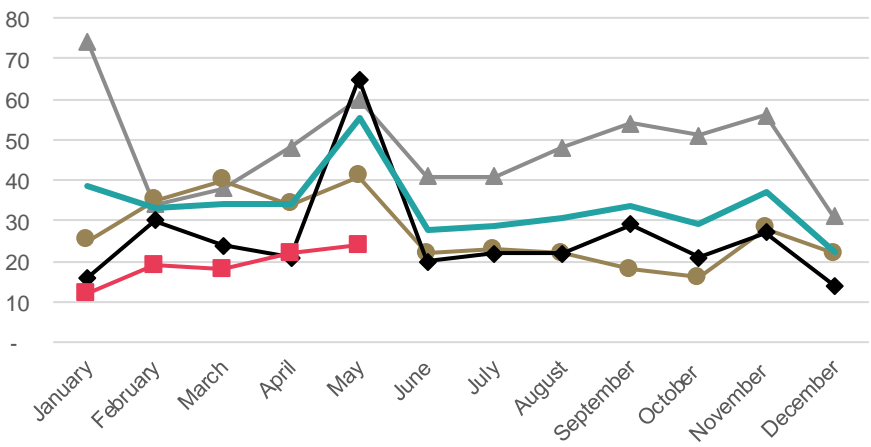
Region	2014 YTD	2015 YTD	2016 YTD	2017 YTD	Change Number	Change Percentage
Auckland	934	899	619	461	-158	-26%
Waikato	214	193	123	137	14	11%
Otago	160	108	84	70	-14	-17%
Canterbury	80	65	63	55	-8	-13%
Wellington	114	66	57	48	-9	-16%
Other	164	102	126	44	-82	-65%
Total	1,666	1,433	1,072	815	-257	-24%

- TSV for the YTD 2017 have decreased by 36% (-267) compared to the YTD 2016, a result of a change in the Saudi government's scholarships policy for its outbound students.
- Both FSV and RSV in the YTD 2017 have declined by over a third (39% and 35% respectively) compared to the YTD 2016, and this decline is expected to continue into the rest of 2017.
- VSV were 730 on 1 June 2017, a 25% decrease (-243) compared to the same day in 2016.

**Saudi Arabia: TSV approved in 2014-2017**



**Saudi Arabia: FSV approved in 2014-2017**



**In brief**

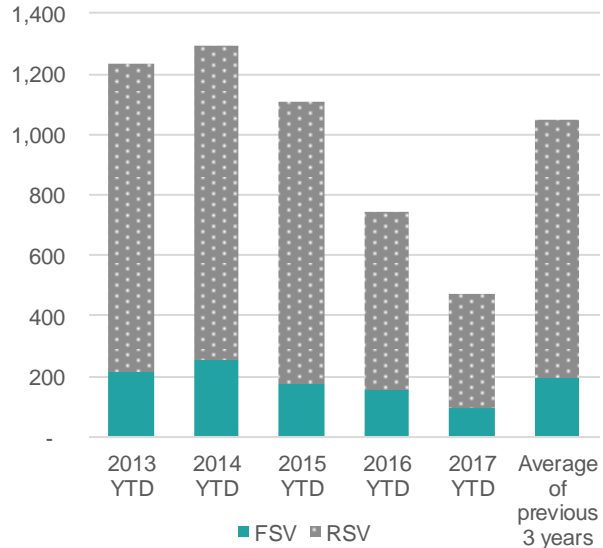
YTD	FSV	RSV	TSV
Visas	95	380	475
Change No.	- 61	- 206	- 267
Change Percent	-39%	-35%	-36%

Changes are from the YTD 2016 to the YTD 2017

**Saudi Arabia: TSV by sector (\*)**

	2014 YTD	2015 YTD	2016 YTD	2017 YTD	Change Number	Change Percentage
Schools	58	72	63	46	-17	-27%
ITP	254	202	117	101	-16	-14%
PTE	419	364	247	101	-146	-59%
Universities	554	463	315	227	-88	-28%
<b>Total</b>	<b>1,285</b>	<b>1,101</b>	<b>742</b>	<b>475</b>	<b>-267</b>	<b>-36%</b>

**Saudi Arabia: Cumulative FSV and RSV**



**Saudi Arabia: FSV by sector (\*)**

	2014 YTD	2015 YTD	2016 YTD	2017 YTD	Change Number	Change Percentage
Schools	16	17	10	9	-1	-10%
ITP	48	10	4	7	3	75%
PTE	123	116	124	68	-56	-45%
Universities	64	28	18	11	-7	-39%
<b>Total</b>	<b>251</b>	<b>171</b>	<b>156</b>	<b>95</b>	<b>-61</b>	<b>-39%</b>

(\*) Please note that numbers by sector may not always add up to the same as the total because sector is not always stated.

**Saudi Arabia: TSV by region**

Region	2014 YTD	2015 YTD	2016 YTD	2017 YTD	Change Number	Change Percentage
Auckland	779	755	477	315	-162	-34%
Waikato	158	147	75	74	-1	-1%
Otago	115	66	44	31	-13	-30%
Manawatu	57	39	90	15	-75	-83%
Wellington	83	46	26	24	-2	-8%
Other	98	53	30	16	-14	-47%
<b>Total</b>	<b>1,290</b>	<b>1,106</b>	<b>742</b>	<b>475</b>	<b>-267</b>	<b>-36%</b>

**Saudi Arabia: 2016 Total visas**

FSV	311
RSV	981
<b>TSV</b>	<b>1,292</b>

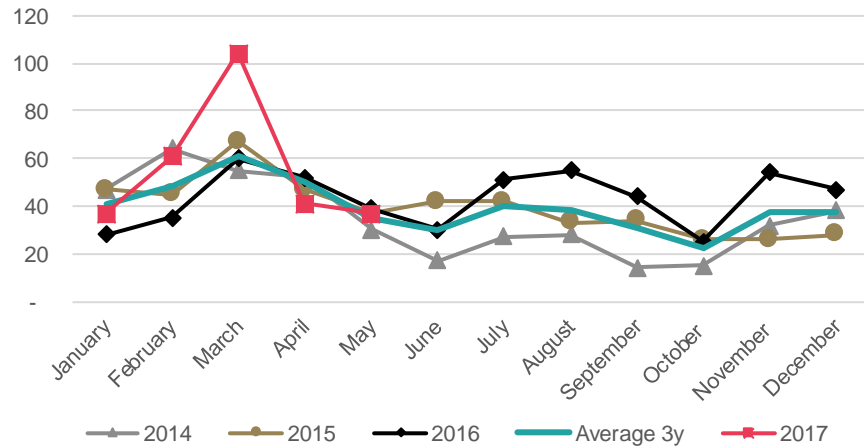
# Trends by sector

---

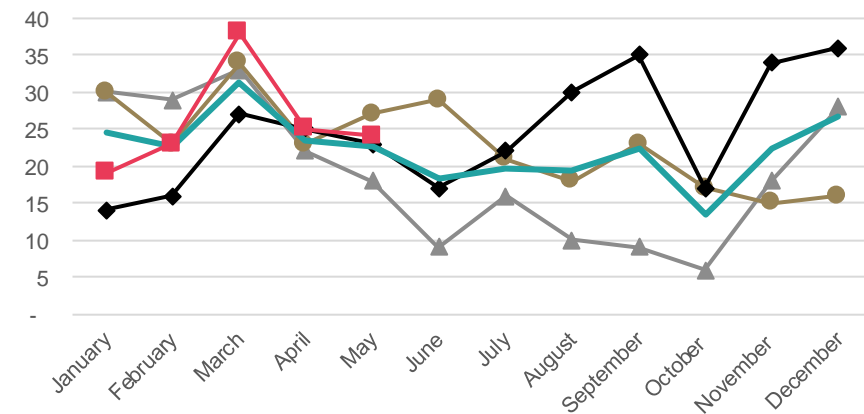


- TSV for the primary school sector have increased by 31% (+66) for the YTD 2017 compared to the YTD 2016. There were increases in TSV for China (+115%, +55) and Korea (+38%, +30).
- VSV were 636 on 1 June 2017, a 40% (+182) increase on the same day in 2016.

**Primary: TSV approved in 2013-2017**



**Primary: FSV approved in 2013-2017**

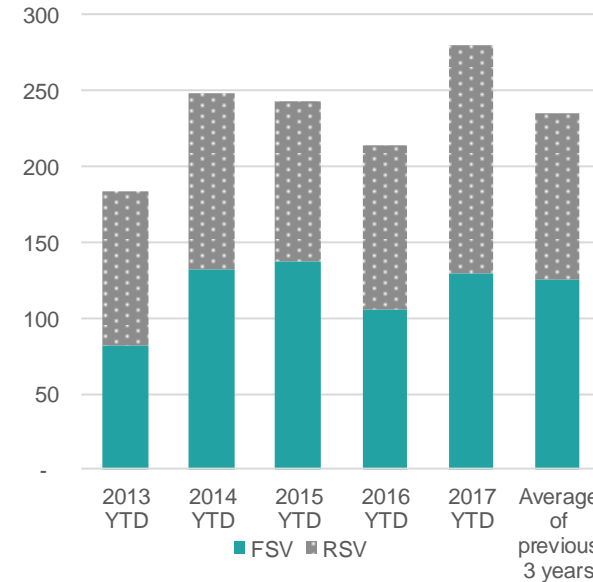


**In Brief**

YTD	FSV	RSV	TSV
Visas	129	151	280
Change No.	24	42	66
Change Percent	23%	39%	31%

Changes are from the YTD 2016 to the YTD 2017

**Primary: Cumulative FSV and RSV**



**Primary: 2016 Total visas**

FSV	296
RSV	224
TSV	520

**Primary: TSV by country**

	2014 YTD	2015 YTD	2016 YTD	2017 YTD	Chg No.	Chg %
Korea	112	105	80	110	30	38%
China	29	46	48	103	55	115%
Japan	41	32	32	18	-14	-44%
Saudi Arabia	5	7	12	5	-7	-58%
Thailand	12	7	8	7	-1	-13%
Other	49	46	34	37	3	9%
<b>Total</b>	<b>248</b>	<b>243</b>	<b>214</b>	<b>280</b>	<b>66</b>	<b>31%</b>

**Primary: FSV by country**

	2014 YTD	2015 YTD	2016 YTD	2017 YTD	Chg No.	Chg %
Korea	67	68	43	51	8	19%
China	20	24	28	54	26	93%
Japan	11	11	14	5	-9	-64%
Germany	5	1	3	1	-2	-67%
Thailand	8	5	1	1	0	0%
Other	21	28	16	17	1	6%
<b>Total</b>	<b>132</b>	<b>137</b>	<b>105</b>	<b>129</b>	<b>24</b>	<b>23%</b>

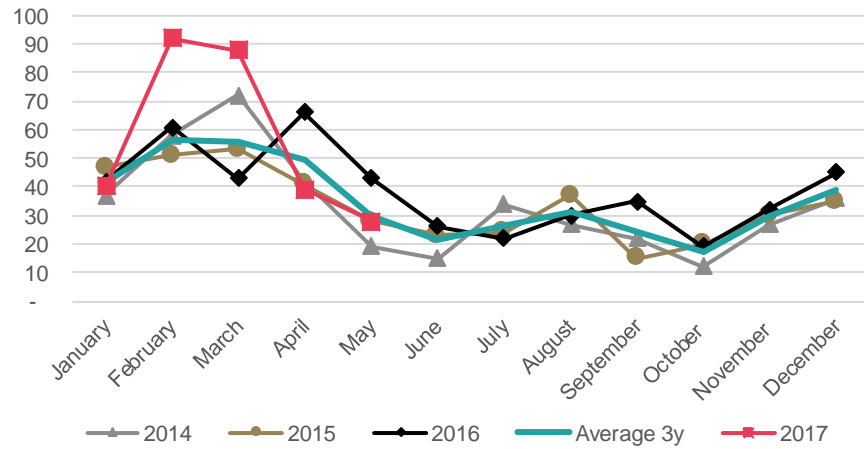
**Primary: TSV by region**

Region	2014 YTD	2015 YTD	2016 YTD	2017 YTD	Chg No.	Chg %
Auckland	116	120	107	121	14	13%
Bay of Plenty	34	40	36	60	24	67%
Canterbury	42	35	23	40	17	74%
Waikato	22	13	11	17	6	55%
Wellington	11	10	11	14	3	27%
Other	23	25	26	28	2	8%
<b>Total</b>	<b>248</b>	<b>243</b>	<b>214</b>	<b>280</b>	<b>66</b>	<b>31%</b>

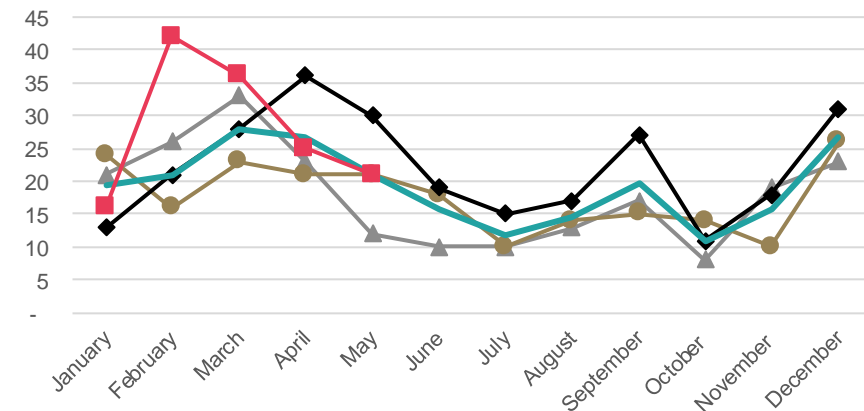


- TSV for the intermediate school sector increased by 13% (+32) for the YTD 2017 compared to the YTD 2016. The main increase was for China (+54%, +33).
- VSV were 440 on 1 June 2017, a 4% (-18) increase on the same day in 2016.

**Intermediate: TSV approved in 2013-2017**



**Intermediate: FSV approved in 2013-2017**

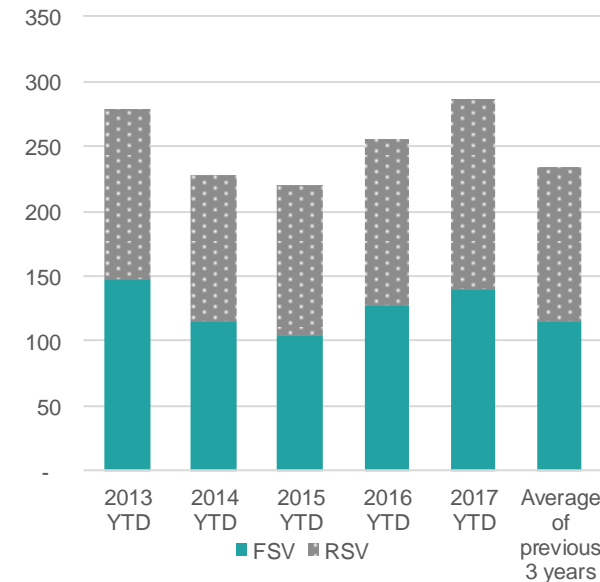


**In Brief**

YTD	FSV	RSV	TSV
Visas	140	147	287
Change No.	12	20	32
Change Percent	9%	16%	13%

Changes are from the YTD 2016 to the YTD 2017

**Intermediate: Cumulative FSV and RSV**



**Intermediate: 2016 Total visas**

FSV	266
RSV	198
TSV	464

**Intermediate: TSV by country**

	2014 YTD	2015 YTD	2016 YTD	2017 YTD	Chg No.	Chg %
Korea	159	138	134	120	-14	-10%
China	35	42	61	94	33	54%
Japan	9	9	12	13	1	8%
Thailand	4	8	10	11	1	10%
Taiwan	4	1	11	11	0	0%
Other	17	22	27	38	11	41%
<b>Total</b>	<b>228</b>	<b>220</b>	<b>255</b>	<b>287</b>	<b>32</b>	<b>13%</b>

**Intermediate: FSV by country**

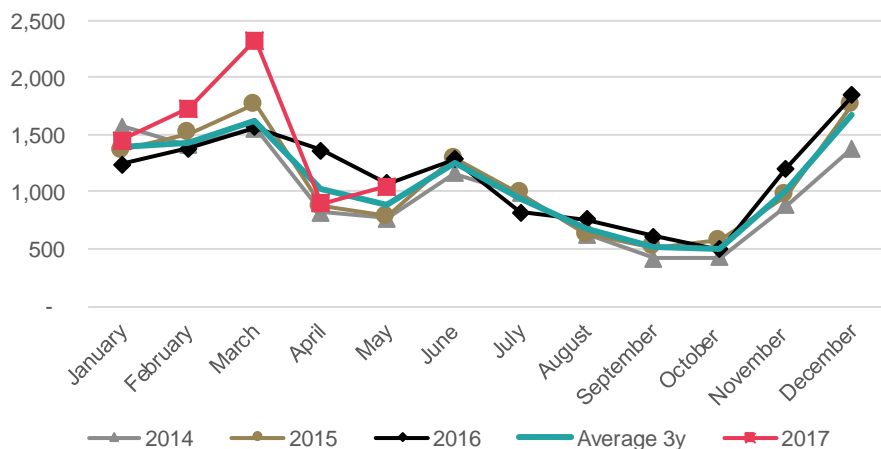
	2014 YTD	2015 YTD	2016 YTD	2017 YTD	Chg No.	Chg %
Korea	81	69	71	64	-7	-10%
China	20	20	30	46	16	53%
Japan	2	2	6	5	-1	-17%
Thailand	2	2	2	4	2	100%
Taiwan	2	-	4	1	-3	-75%
Other	8	12	15	20	5	33%
<b>Total</b>	<b>115</b>	<b>105</b>	<b>128</b>	<b>140</b>	<b>12</b>	<b>9%</b>

**Intermediate: TSV by region**

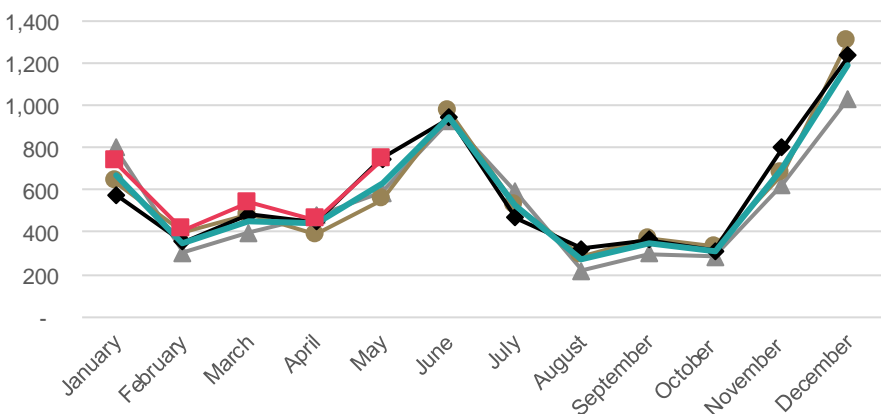
Region	2014 YTD	2015 YTD	2016 YTD	2017 YTD	Chg No.	Chg %
Auckland	166	153	170	192	22	13%
Bay of Plenty	26	33	53	53	0	0%
Canterbury	16	11	9	13	4	44%
Waikato	8	6	7	10	3	43%
Hawke's Bay	3	4	4	4	0	0%
Other	9	13	12	15	3	25%
<b>Total</b>	<b>228</b>	<b>220</b>	<b>255</b>	<b>287</b>	<b>32</b>	<b>13%</b>

- TSV have increased 12% (+822) for the YTD 2017, with both FSV (+11%, +276) and RSV (+14%, +546) increasing compared to the YTD 2016.
- FSV have increased for Chile (+260%, +78), Brazil (+45%, +66), and Italy (+61, +107).
- VSV for secondary school students were 12,571 on 1 June 2017, which was a 12% (+1,387) increase as on the same day last year.

**Secondary: TSV approved in 2013-2017**



**Secondary: FSV approved in 2013-2017**

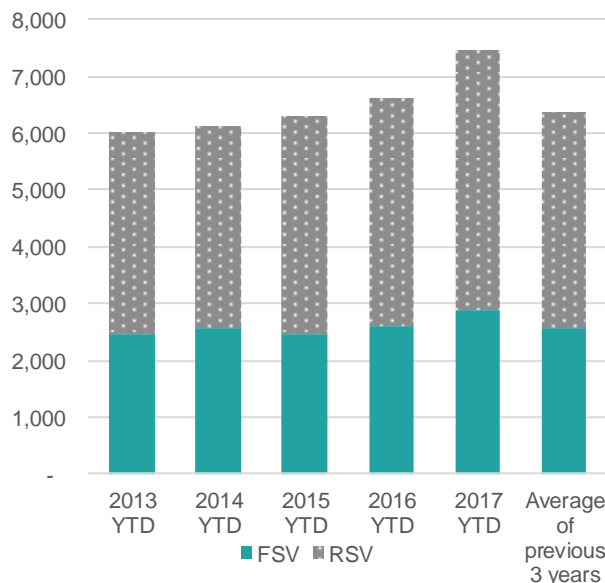


**In Brief**

YTD	FSV	RSV	TSV
Visas	2,887	4,561	7,448
Change No.	276	546	822
Change Percent	11%	14%	12%

Changes are from the YTD 2016 to the YTD 2017

**Secondary: Cumulative FSV and RSV**



**Secondary: 2016 Total visas**

FSV	7,051
RSV	6,589
TSV	13,640

**Secondary: TSV by country**

	2014 YTD	2015 YTD	2016 YTD	2017 YTD	Chg No.	Chg %
China	1,773	2,196	2,581	3,053	472	18%
Korea	948	883	840	887	47	6%
Japan	685	696	697	701	4	1%
Thailand	619	722	602	604	2	0%
Germany	461	320	400	417	17	4%
Other	1,648	1,492	1,506	1,786	280	19%
<b>Total</b>	<b>6,134</b>	<b>6,309</b>	<b>6,626</b>	<b>7,448</b>	<b>822</b>	<b>12%</b>

**Secondary: FSV by country**

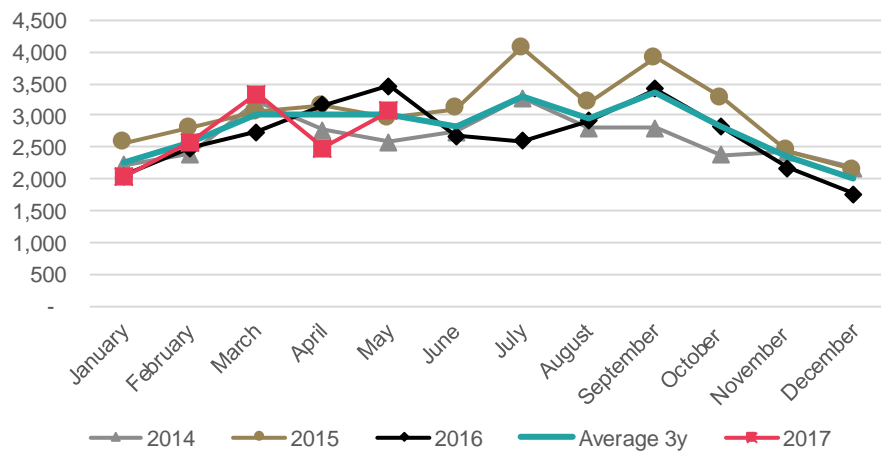
	2014 YTD	2015 YTD	2016 YTD	2017 YTD	Chg No.	Chg %
China	590	740	772	797	25	3%
Germany	405	268	355	371	16	5%
Japan	240	260	292	302	10	3%
Korea	209	201	248	247	-1	0%
Thailand	232	261	201	184	-17	-8%
Other	898	730	743	986	243	33%
<b>Total</b>	<b>2,574</b>	<b>2,460</b>	<b>2,611</b>	<b>2,887</b>	<b>276</b>	<b>11%</b>

**Secondary: TSV by region**

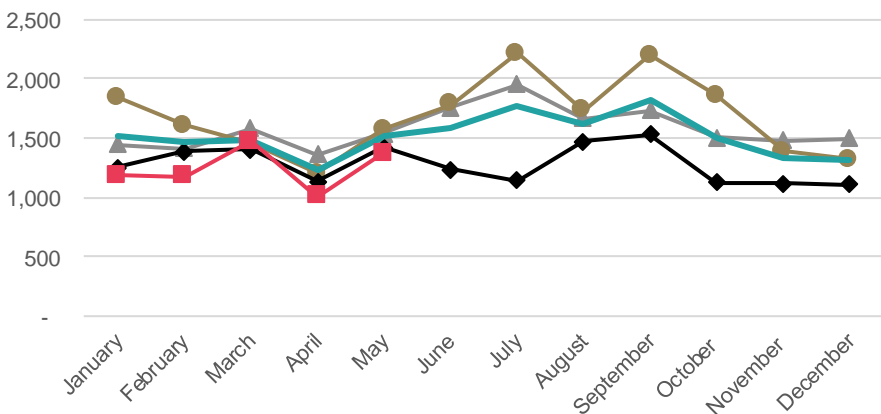
Region	2014 YTD	2015 YTD	2016 YTD	2017 YTD	Chg No.	Chg %
Auckland	3,400	3,664	3,891	4,280	389	10%
Canterbury	557	555	608	699	91	15%
Wellington	443	390	393	519	126	32%
Bay of Plenty	330	336	385	440	55	14%
Waikato	320	302	337	385	48	14%
Other	1,084	1,062	1,012	1,125	113	11%
<b>Total</b>	<b>6,134</b>	<b>6,309</b>	<b>6,626</b>	<b>7,448</b>	<b>822</b>	<b>12%</b>

- PTE sector TSV decreased by 3% (-384) for the YTD 2017, almost solely attributed to a decline in FSV (-6%, -398).
- FSV have decreased by 6% (-398) compared to the YTD 2016. The FSV decrease for India (-47%, -882) has been softened by China (+13%, +135) and Colombia (+48%, + 127). The slight decline in FSV when compared to VSV (below) suggests a possible rallying in PTE student numbers in the second half of the year.
- VSV for PTE students were 22,388 on 1 June 2017, which was a 17% (-4,545) decrease on the same date last year.

PTE: TSV approved in 2013-2017



PTE: FSV approved in 2013-2017

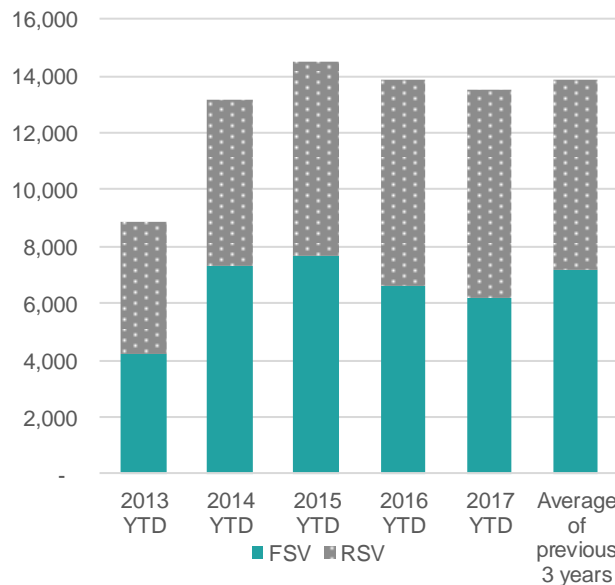


In Brief

YTD	FSV	RSV	TSV
Visas	6,199	7,305	13,504
Change No.	- 398	14	- 384
Change Percent	-6%	0%	-3%

Changes are from the YTD 2016 to the YTD 2017

PTE: Cumulative FSV and RSV



PTE: 2016 Total visas

FSV	15,313
RSV	16,912
TSV	32,225

PTE: TSV by country

	2014 YTD	2015 YTD	2016 YTD	2017 YTD	Chg No.	Chg %
India	5,269	5,544	4,628	3,531	-1097	-24%
China	2,705	3,288	3,607	3,879	272	8%
Korea	873	839	909	765	-144	-16%
Brazil	261	466	570	698	128	22%
Japan	566	567	586	525	-61	-10%
Other	3,481	3,823	3,588	4,106	518	14%
Total	13,155	14,527	13,888	13,504	-384	-3%

PTE: FSV by country

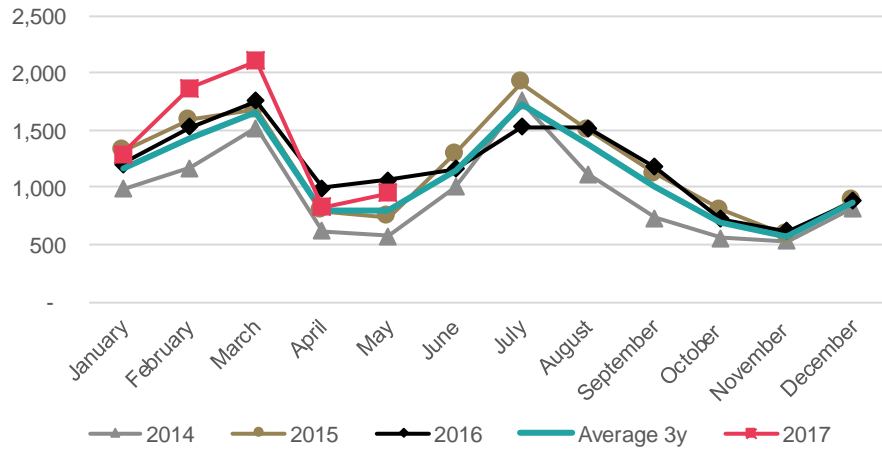
	2014 YTD	2015 YTD	2016 YTD	2017 YTD	Chg No.	Chg %
India	3,482	3,076	1,859	977	-882	-47%
China	724	971	1,076	1,211	135	13%
Korea	483	448	523	442	-81	-15%
Brazil	225	399	471	560	89	19%
Japan	372	374	417	385	-32	-8%
Other	2,059	2,414	2,251	2,624	373	17%
Total	7,345	7,682	6,597	6,199	-398	-6%

PTE: TSV by region

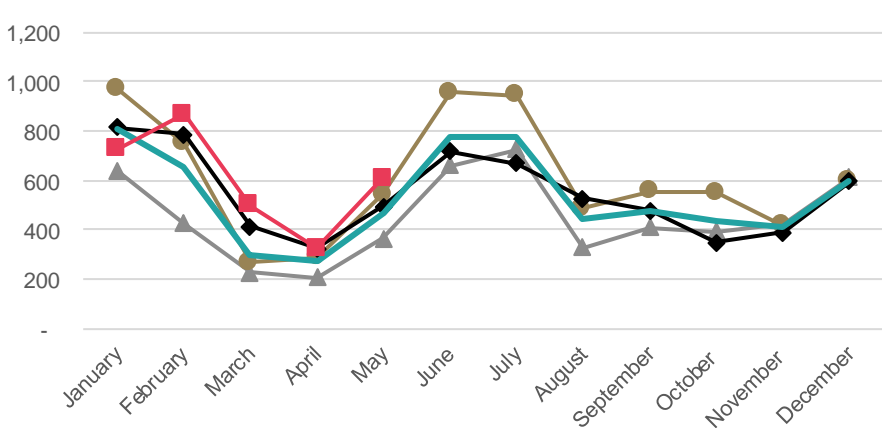
Region	2014 YTD	2015 YTD	2016 YTD	2017 YTD	Chg No.	Chg %
Auckland	10,383	11,564	11,070	10,677	-393	-4%
Canterbury	1,096	1,201	1,079	1,105	26	2%
Bay of Plenty	445	458	432	359	-73	-17%
Manawatu	325	301	331	268	-63	-19%
Wellington	256	256	240	316	76	32%
Other	650	747	736	779	43	6%
Total	13,155	14,527	13,888	13,504	-384	-3%

- The ITP sector shows an 8% (+509) increase in TSV for the YTD 2017. Both RSV (9%, +317) and FSV (+7%, +192) increased compared to the YTD 2016. The increase in FSV comes from India (+7%, +113) and China (+15%, +70). This increase is expected to continue throughout 2017.
- VSV were 11,719 on 1 June 2017, which was a 2% (+257) increase compared to 1 June 2016.

ITP: TSV approved in 2013-2017



ITP: FSV approved in 2013-2017

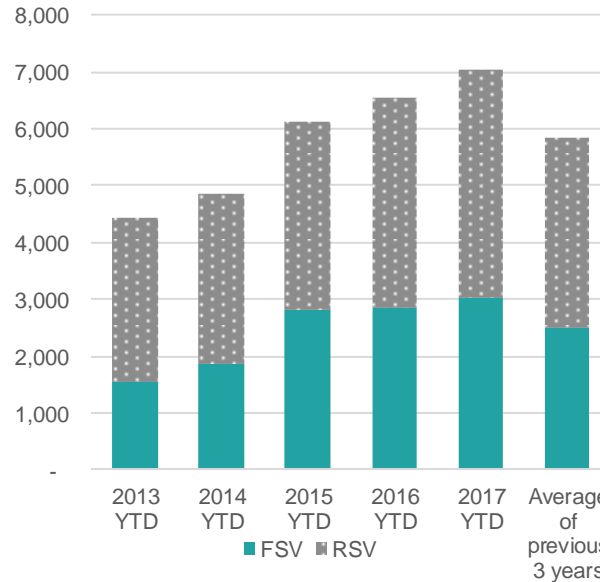


In Brief

YTD	FSV	RSV	TSV
Visas	3,025	4,029	7,054
Change No.	192	317	509
Change Percent	7%	9%	8%

Changes are from the YTD 2016 to the YTD 2017

ITP: Cumulative FSV and RSV



ITP: 2016 Total visas

FSV	6,561
RSV	7,598
TSV	14,159

ITP: TSV by country

	2014 YTD	2015 YTD	2016 YTD	2017 YTD	Chg No.	Chg %
India	1,282	2,210	2,487	2,701	214	9%
China	1,960	2,198	2,338	2,560	222	9%
Korea	124	119	146	169	23	16%
Saudi Arabia	254	202	117	101	-16	-14%
Sri Lanka	73	113	117	150	33	28%
Other	1,176	1,279	1,340	1,373	33	2%
Total	4,869	6,121	6,545	7,054	509	8%

ITP: FSV by country

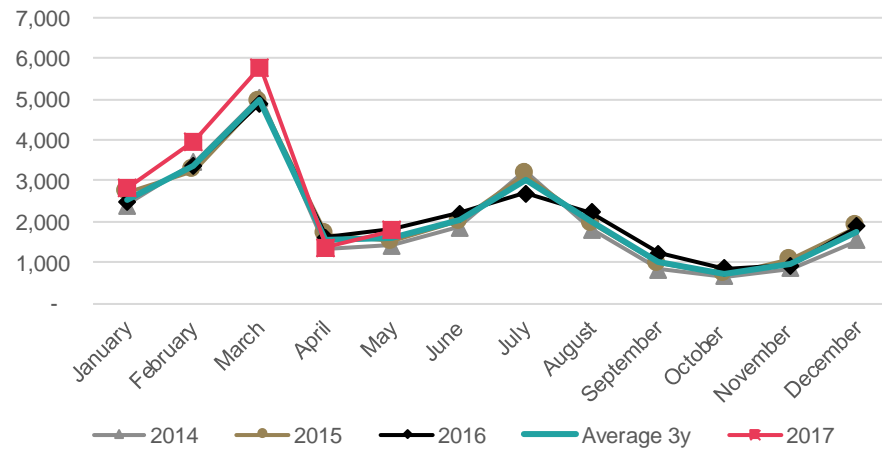
	2014 YTD	2015 YTD	2016 YTD	2017 YTD	Chg No.	Chg %
India	826	1,635	1,550	1,663	113	7%
China	396	426	467	537	70	15%
Philippines	48	88	87	102	15	17%
Sri Lanka	34	63	72	107	35	49%
Japan	69	47	80	45	-35	-44%
Other	492	557	577	571	-6	-1%
Total	1,865	2,816	2,833	3,025	192	7%

ITP: TSV by region

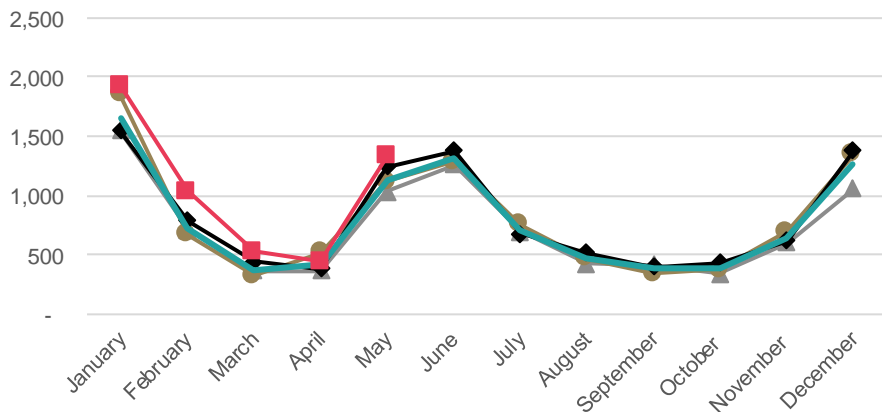
Region	2014 YTD	2015 YTD	2016 YTD	2017 YTD	Chg No.	Chg %
Auckland	2,189	2,825	2,726	3,301	575	21%
Waikato	525	666	714	722	8	1%
Canterbury	444	536	575	513	-62	-11%
Wellington	352	480	583	653	70	12%
Bay of Plenty	470	507	567	484	-83	-15%
Other	889	1,107	1,380	1,381	1	0%
Total	4,869	6,121	6,545	7,054	509	8%

- The universities sector shows an 11% (+ 1,541) increase in TSV for the YTD 2017. FSV in the universities sector have grown by 19% (+850) compared to the YTD 2016. This growth is under-pinned by increased FSV for India (+46%, +155) and the USA (+24%, +266).
- FSV for May 2017 were above recorded post 2013 levels and June 2017 is also expected record an increase in FSV for the universities sector.
- VSV for universities were 23,566 on 1 June 2017, which was a 13% (+2,359) increase on the same date last year.

**Universities: TSV approved in 2013-2017**



**Universities: FSV approved in 2013-2017**

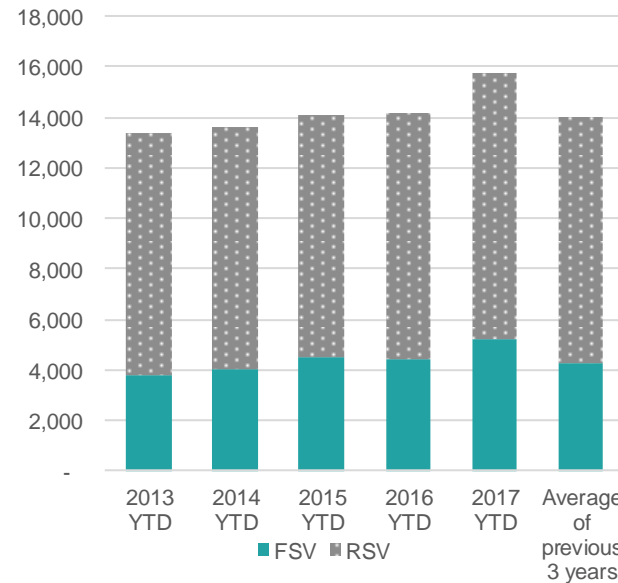


**In Brief**

YTD	FSV	RSV	TSV
Visas	5,243	10,478	15,721
Change No.	850	691	1,541
Change Percent	19%	7%	11%

Changes are from the YTD 2016 to the YTD 2017

**Universities: Cumulative FSV and RSV**



**Universities: 2016 Total visas**

FSV	9,777
RSV	16,364
TSV	26,141

**Universities: TSV by country**

	2014 YTD	2015 YTD	2016 YTD	2017 YTD	Chg No.	Chg %
China	5,713	6,191	6,666	7,317	651	10%
USA	1,184	1,473	1,253	1,533	280	22%
India	554	535	611	843	232	38%
Malaysia	745	670	671	651	-20	-3%
Korea	603	489	441	401	-40	-9%
Other	4,846	4,740	4,538	4,976	438	10%
Total	13,645	14,098	14,180	15,721	1541	11%

**Universities: FSV by country**

	2014 YTD	2015 YTD	2016 YTD	2017 YTD	Chg No.	Chg %
USA	1,009	1,332	1,100	1,366	266	24%
China	919	980	971	993	22	2%
India	287	279	340	495	155	46%
Malaysia	149	149	218	193	-25	-11%
Japan	127	143	139	174	35	25%
Other	1,523	1,583	1,625	2,022	397	24%
Total	4,014	4,466	4,393	5,243	850	19%

**Universities: TSV by region**

Region	2014 YTD	2015 YTD	2016 YTD	2017 YTD	Chg No.	Chg %
Auckland	6,915	7,284	7,436	8,305	869	12%
Otago	1,777	1,822	1,716	1,851	135	8%
Wellington	1,545	1,580	1,615	1,740	125	8%
Canterbury	1,450	1,495	1,669	1,875	206	12%
Waikato	1,176	1,116	1,071	1,175	104	10%
Other	782	801	673	775	102	15%
Total	13,645	14,098	14,180	15,721	1541	11%





# Trends by region

---



# A note about regional data

---

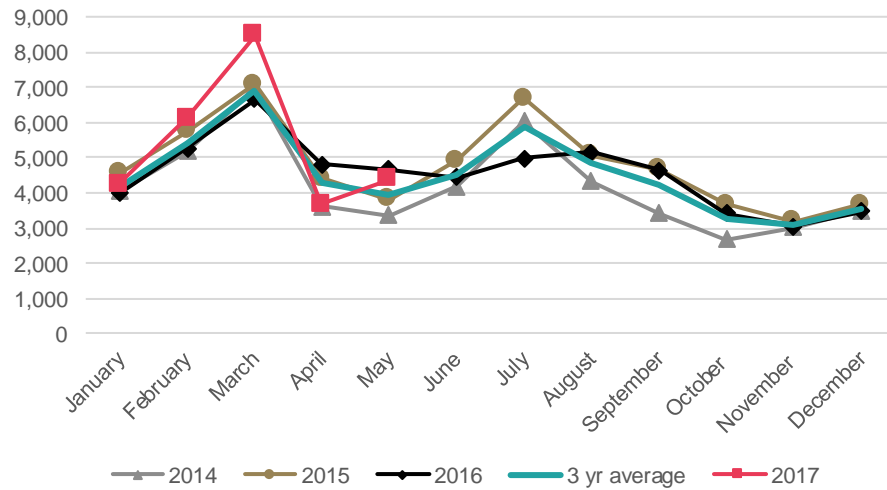
Due to data improvement processes within Immigration New Zealand, there have been some changes to region-based data for visas.

Numbers in these slides may have changed from slides previously produced.

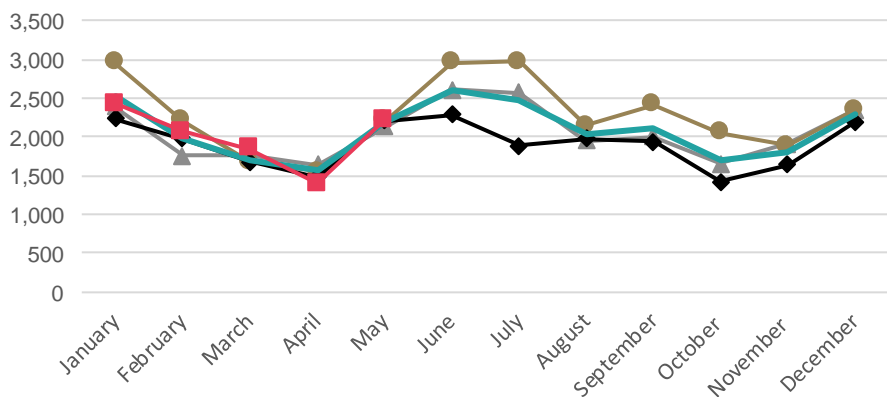
This data should be treated with caution, therefore the number and percentage changes should be considered approximates.

- Auckland has increased in TSV by 6% in the YTD 2017 compared to the YTD 2016 with strong increases in ITP (+21%, +575) and universities (+12%, +869) sectors.
- There was an increase in FSV for all sectors, excluding the PTE sector which declined (-7%, -360).
- With many university driven markets expected to increase in June 2017, Auckland, which is New Zealand's preferred university destination may see an increase in FSV and TSV from this sector.
- VSV for Auckland was stable on 1 June 2017, decreasing by 2% (-882) since 1 June 2016 to reach 43,225.

**Auckland: TSV approved in 2014-2017**



**Auckland: FSV approved in 2014-2017**



**In brief**

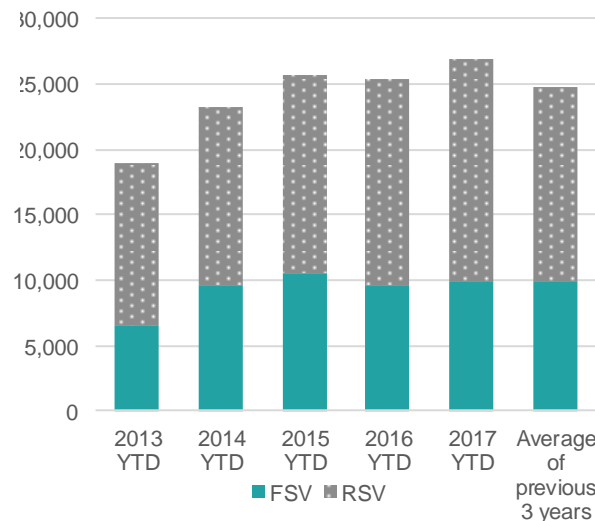
YTD	FSV	RSV	TSV
Visas	9,951	16,939	26,890
Change No.	373	1,110	1,483
Change Percent	4%	7%	6%

Changes are from the YTD 2016 to the YTD 2017

**Auckland: TSV by sector (\*)**

	2014 YTD	2015 YTD	2016 YTD	2017 YTD	Change Number	Change Percentage
Schools	3,682	3,937	4,168	4,593	425	10%
ITP	2,189	2,825	2,726	3,301	575	21%
PTE	10,383	11,564	11,070	10,677	-393	-4%
Universities	6,915	7,284	7,436	8,305	869	12%
Total	23,169	25,610	25,400	26,876	1476	6%

**Auckland: Cumulative FSV and RSV**



**Auckland: FSV by sector (\*)**

	2014 YTD	2015 YTD	2016 YTD	2017 YTD	Change Number	Change Percentage
Schools	1,411	1,467	1,517	1,600	83	5%
ITP	766	1,277	1,169	1,432	263	22%
PTE	5,699	6,036	5,039	4,679	-360	-7%
Universities	1,755	1,808	1,848	2,234	386	21%
Total	9,631	10,588	9,573	9,945	372	4%

(\*) Please note that numbers by sector may not always add up to the same as the total because sector is not always stated.

**Auckland: TSV by market**

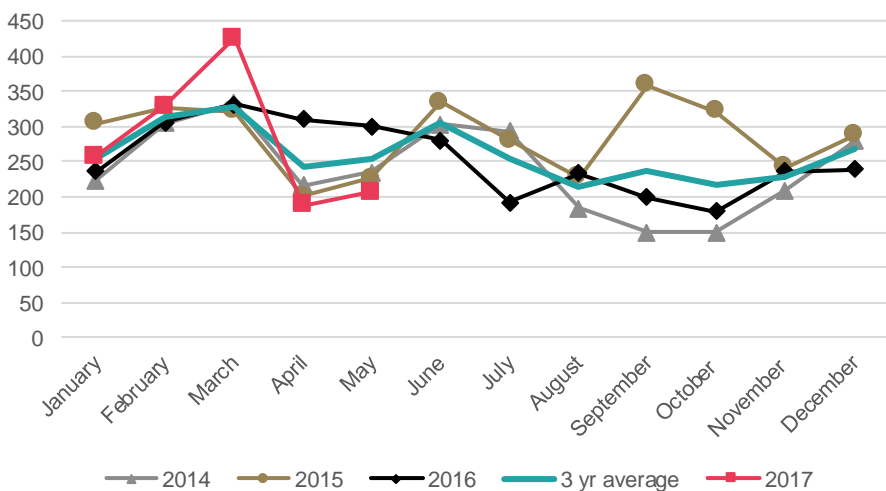
Country	2014 YTD	2015 YTD	2016 YTD	2017 YTD	Change Number	Change Percentage
China	8,044	9,313	10,294	11,402	1108	11%
India	5,037	5,863	5,154	4,722	-432	-8%
Korea	2,002	1,814	1,770	1,602	-168	-9%
Japan	771	768	798	727	-71	-9%
Thailand	693	669	631	740	109	17%
Other	6,657	7,191	6,760	7,697	937	14%
Total	23,204	25,618	25,407	26,890	1483	6%

**Auckland: 2016 total visas**

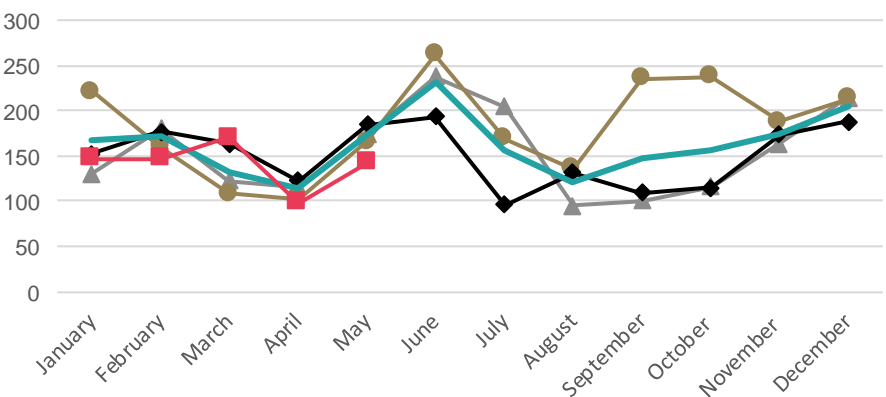
FSV	22,893
RSV	31,689
TSV	54,582

- TSV for the Bay of Plenty for the YTD 2017 declined (-5%, -80) compared to the YTD 2016 with most sectors declining. The exception was the school sector which continued its growth (+17%, +79).
- The India market declined (-29%, -200), especially in the PTE (-32%, -88) and ITP (-26%, -180) sectors, while students from Korea have increased (+25%, +61).
- FSV and TSV from the India market and the PTE/ITP sector are expected to continuing declining throughout 2017.
- VSV for 1 June 2017 were 2,544 and have declined by 9% (-261) since 1 June 2016.

**Bay of Plenty: TSV approved in 2014-2017**



**Bay of Plenty: FSV approved in 2014-2017**



**In brief**

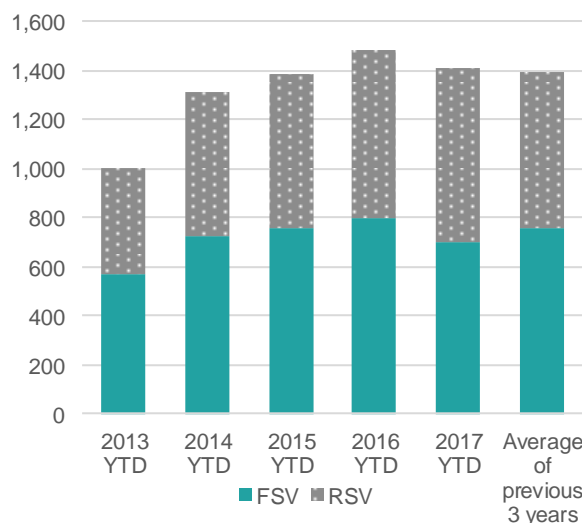
YTD	FSV	RSV	TSV
Visas	704	702	1,406
Change No.	- 96	16	- 80
Change Percent	-12%	2%	-5%

Changes are from the YTD 2016 to the YTD 2017

**Bay of Plenty: TSV by sector (\*)**

	2014 YTD	2015 YTD	2016 YTD	2017 YTD	Change Number	Change Percentage
Schools	390	409	474	553	79	17%
ITP	470	507	567	484	-83	-15%
PTE	445	458	432	359	-73	-17%
Universities	7	7	12	10	-2	-17%
Total	1,312	1,381	1,485	1,406	-79	-5%

**Bay of Plenty: Cumulative FSV and RSV**



**Bay of Plenty: FSV by sector (\*)**

	2014 YTD	2015 YTD	2016 YTD	2017 YTD	Change Number	Change Percentage
Schools	196	192	245	259	14	6%
ITP	263	301	331	280	-51	-15%
PTE	262	261	214	160	-54	-25%
Universities	2	3	10	5	-5	-50%
Total	723	757	800	704	-96	-12%

(\*) Please note that numbers by sector may not always add up to the same as the total because sector is not always stated.

**Bay of Plenty: TSV by market**

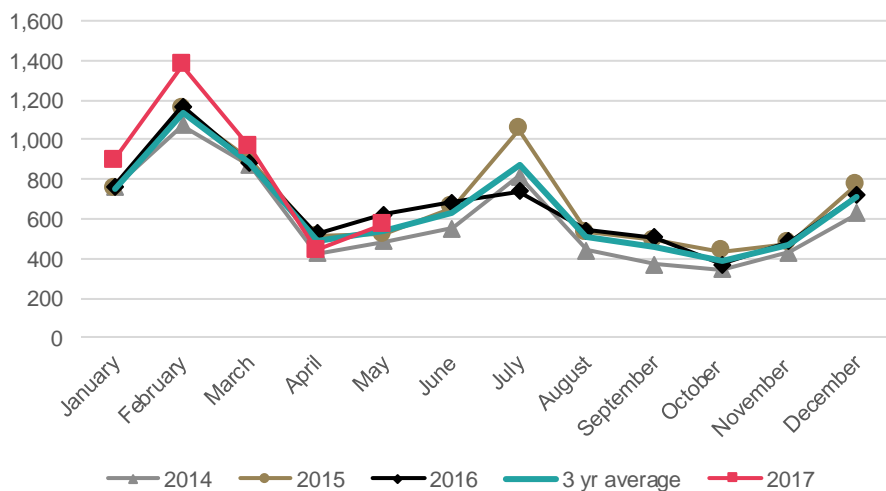
Country	2014 YTD	2015 YTD	2016 YTD	2017 YTD	Change Number	Change Percentage
India	570	665	691	491	-200	-29%
Korea	187	202	245	306	61	25%
China	79	68	98	116	18	18%
Japan	74	60	73	62	-11	-15%
Germany	61	45	64	74	10	16%
Other	342	341	315	357	42	13%
Total	1,313	1,381	1,486	1,406	-80	-5%

**Bay of Plenty: 2016 total visas**

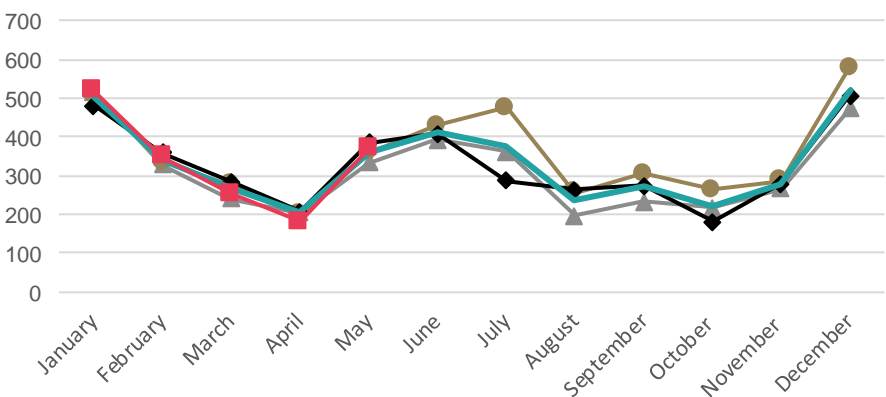
FSV	1,806
RSV	1,240
TSV	3,046

- There has been a 7% increase in TSV in the 2017 YTD compared to the YTD 2016. This is driven by an increase in RSV across all sectors. FSV are flat. The increases in FSV for the universities (+5%, +30) and schools (+32%, +82) sectors were balanced by decreased FSV for ITP (-32%, -77) and PTE (-13%, -78) sectors.
- The universities sector has been increasing in 2017, and is expected to continue. This may stabilise the decrease in FSV.
- The number of VSV for Canterbury on 1 June 2017 was 6,962, which is stable compared to 1 June 2016 (+3%, +224).

**Canterbury: TSV approved in 2014-2017**



**Canterbury: FSV approved in 2014-2017**

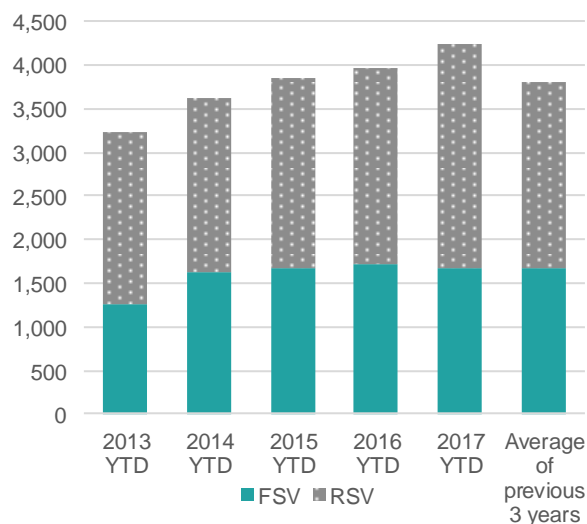


**In brief**

YTD	FSV	RSV	TSV
Visas	1,667	2,578	4,245
Change No.	- 43	323	280
Change Percent	-3%	14%	7%

Changes are from the YTD 2016 to the YTD 2017

**Canterbury: Cumulative FSV and RSV**



**Canterbury: 2016 total visas**

FSV	3,903
RSV	4,110
TSV	8,013

**Canterbury: TSV by sector (\*)**

	2014 YTD	2015 YTD	2016 YTD	2017 YTD	Change Number	Change Percentage
Schools	615	601	640	752	112	18%
ITP	444	536	575	513	-62	-11%
PTE	1,096	1,201	1,079	1,105	26	2%
Universities	1,450	1,495	1,669	1,875	206	12%
Total	3,605	3,833	3,963	4,245	282	7%

**Canterbury: FSV by sector (\*)**

	2014 YTD	2015 YTD	2016 YTD	2017 YTD	Change Number	Change Percentage
Schools	270	254	255	337	82	32%
ITP	172	222	242	165	-77	-32%
PTE	685	629	605	527	-78	-13%
Universities	485	564	608	638	30	5%
Total	1,612	1,669	1,710	1,667	-43	-3%

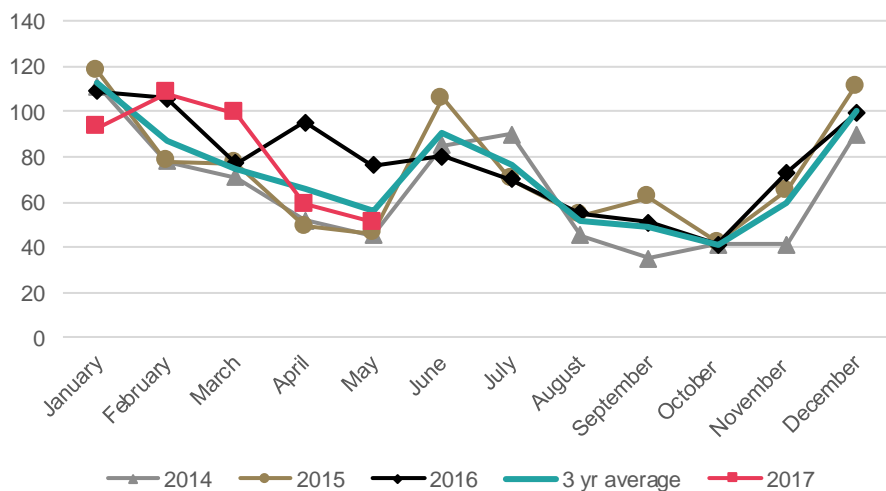
(\*) Please note that numbers by sector may not always add up to the same as the total because sector is not always stated.

**Canterbury: TSV by market**

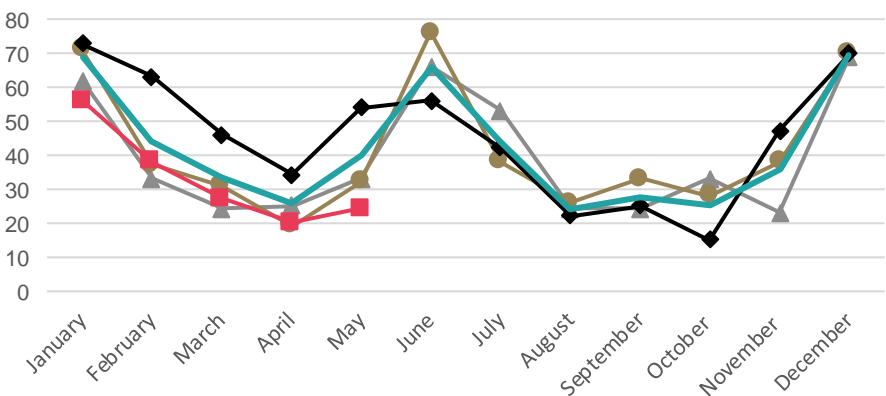
Country	2014 YTD	2015 YTD	2016 YTD	2017 YTD	Change Number	Change Percentage
China	1,090	1,327	1,391	1,653	262	19%
India	655	646	691	603	-88	-13%
Japan	268	287	307	313	6	2%
USA	185	234	190	194	4	2%
Korea	219	188	146	139	-7	-5%
Other	1,195	1,157	1,240	1,343	103	8%
Total	3,612	3,839	3,965	4,245	280	7%

- There has been an 11% (-53) decrease in TSV for the YTD 2017 compared to the YTD 2016, as a result of the decrease in the FSV for the school (-39%, -34) and PTE (-75%, -76) sectors.
- FSV for 2017 are expected to remain lower than past years.
- The number of VSV for 1 June 2017 is 699, which is an 8% decrease (-60) since the same day in 2016.

**Hawke's Bay: TSV approved in 2014-2017**



**Hawke's Bay: FSV approved in 2014-2017**

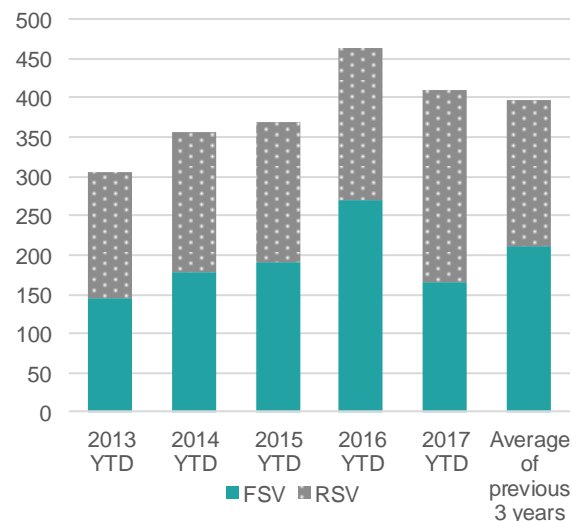


**In brief**

YTD	FSV	RSV	TSV
Visas	165	245	410
Change No.	- 105	52	- 53
Change Percent	-39%	27%	-11%

Changes are from the YTD 2016 to the YTD 2017

**Hawke's Bay: Cumulative FSV and RSV**



**Hawke's Bay: 2016 total visas**

FSV	547
RSV	385
TSV	932

**Hawke's Bay: TSV by sector (\*)**

	2014 YTD	2015 YTD	2016 YTD	2017 YTD	Change Number	Change Percentage
Schools	161	134	156	150	-6	-4%
ITP	117	127	148	170	22	15%
PTE	79	107	159	90	-69	-43%
Universities	-	-	-	-	0	
Total	357	368	463	410	-53	-11%

**Hawke's Bay: FSV by sector (\*)**

	2014 YTD	2015 YTD	2016 YTD	2017 YTD	Change Number	Change Percentage
Schools	73	58	87	53	-34	-39%
ITP	59	70	81	86	5	6%
PTE	45	62	102	26	-76	-75%
Universities	-	-	-	-	0	
Total	177	190	270	165	-105	-39%

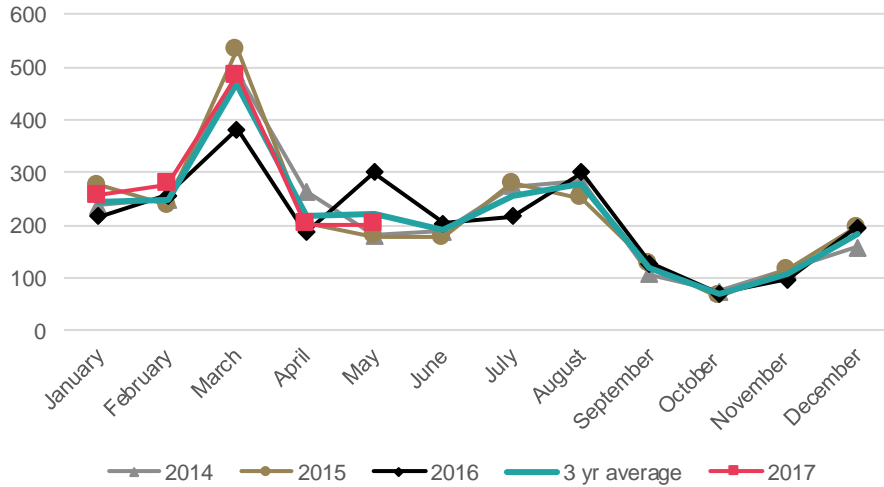
(\* Please note that numbers by sector may not always add up to the same as the total because sector is not always stated.

**Hawke's Bay: TSV by market**

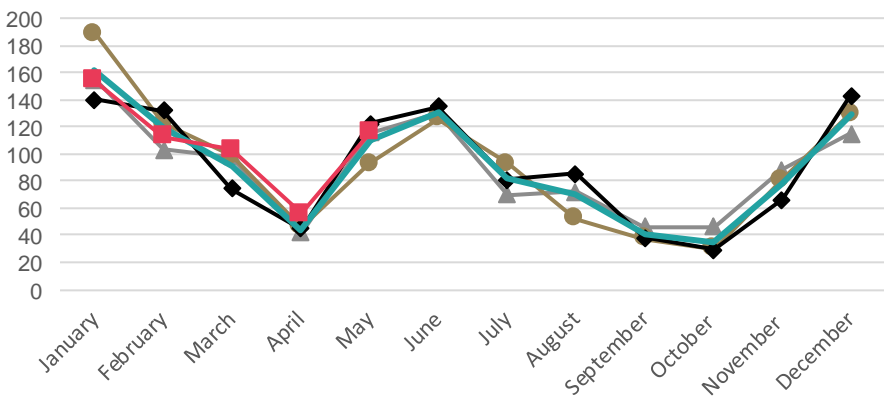
Country	2014 YTD	2015 YTD	2016 YTD	2017 YTD	Change Number	Change Percentage
India	74	124	134	126	-8	-6%
China	61	53	71	80	9	13%
Japan	43	41	61	44	-17	-28%
Germany	35	24	35	24	-11	-31%
Thailand	22	21	15	22	7	47%
Other	122	105	147	114	-33	-22%
Total	357	368	463	410	-53	-11%

- TSV have increased by 6% (+79) in the YTD 2017 compared to the YTD 2016. A decline in the PTE sector (-19%, -63) has been offset by the growth in the universities (+17%, +110) sector.
- 2017 may see slight growth in FSV driven by the universities sector.
- There were 2,370 VSV for this region on 1 June 2017, which is an increase of 11% (+ 227) since the same day in 2016.

**Manawatu: TSV approved in 2014-2017**



**Manawatu: FSV approved in 2014-2017**



**In brief**

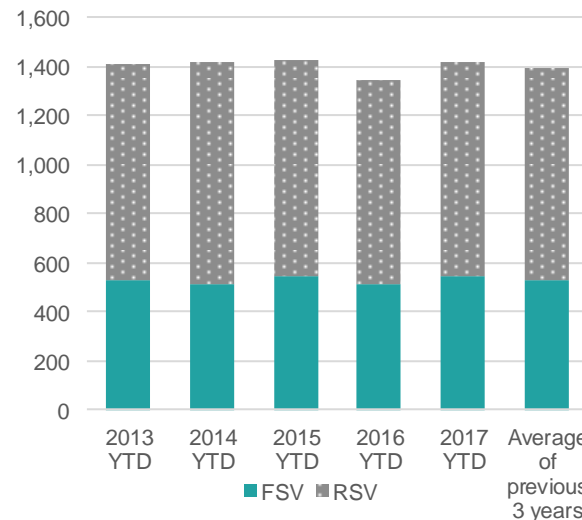
YTD	FSV	RSV	TSV
Visas	542	878	1,420
Change No.	29	50	79
Change Percent	6%	6%	6%

Changes are from the YTD 2016 to the YTD 2017

**Manawatu: TSV by sector (\*)**

	2014 YTD	2015 YTD	2016 YTD	2017 YTD	Change Number	Change Percentage
Schools	247	270	236	267	31	13%
ITP	91	82	119	120	1	1%
PTE	325	301	331	268	-63	-19%
Universities	755	775	655	765	110	17%
<b>Total</b>	<b>1,418</b>	<b>1,428</b>	<b>1,341</b>	<b>1,420</b>	<b>79</b>	<b>6%</b>

**Manawatu: Cumulative FSV and RSV**



**Manawatu: FSV by sector (\*)**

	2014 YTD	2015 YTD	2016 YTD	2017 YTD	Change Number	Change Percentage
Schools	105	122	96	93	-3	-3%
ITP	27	41	66	45	-21	-32%
PTE	178	146	148	129	-19	-13%
Universities	204	239	203	275	72	35%
<b>Total</b>	<b>514</b>	<b>548</b>	<b>513</b>	<b>542</b>	<b>29</b>	<b>6%</b>

(\*) Please note that numbers by sector may not always add up to the same as the total because sector is not always stated.

**Manawatu: TSV by market**

Country	2014 YTD	2015 YTD	2016 YTD	2017 YTD	Change Number	Change Percentage
China	397	388	362	418	56	15%
Japan	223	201	176	189	13	7%
India	93	112	110	135	25	23%
Thailand	95	126	56	44	-12	-21%
USA	58	93	54	67	13	24%
Other	552	509	583	567	-16	-3%
<b>Total</b>	<b>1,418</b>	<b>1,429</b>	<b>1,341</b>	<b>1,420</b>	<b>79</b>	<b>6%</b>

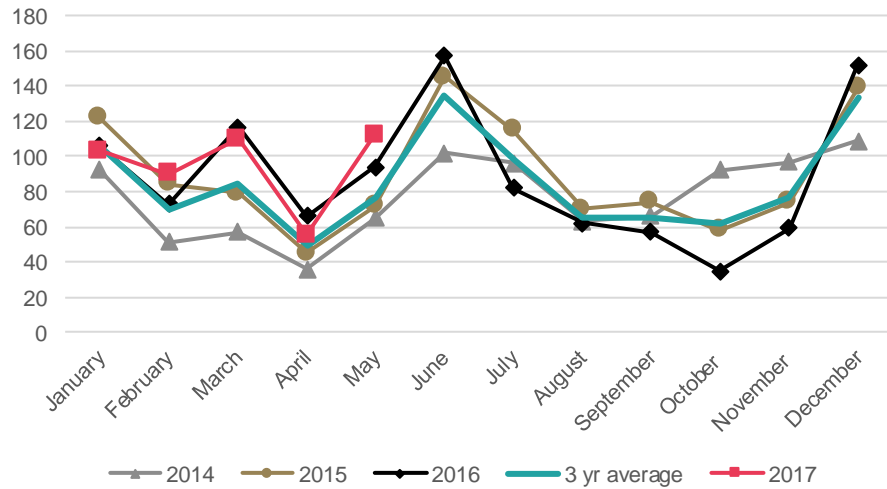
**Manawatu: 2016 total visas**

FSV	1,090
RSV	1,463
TSV	2,553

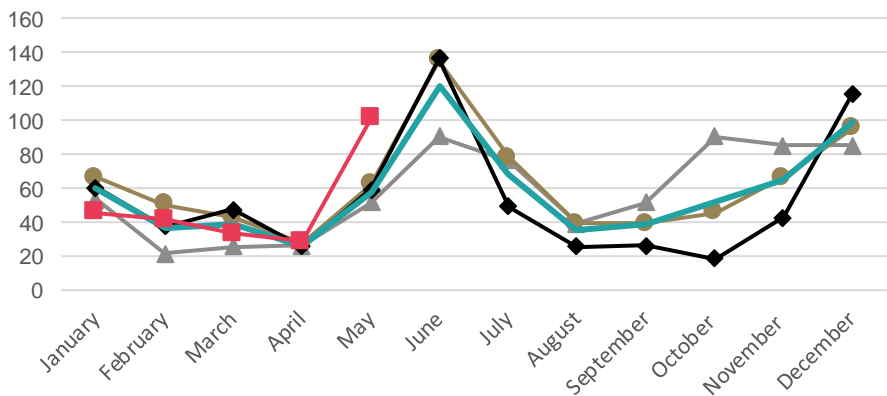


- Nelson TSV have remained static for the YTD 2017 compared to the YTD 2016.
- The decrease in TSV for India (+47%, -47%) has been balanced by the increase in Chinese students (+114%, +67).
- Consistent with annual trends, FSV and TSV for 2017 are expected to peak in June.
- There were 848 VSV for this region on 1 June 2017, which is an decrease of 4% (-37) since the same day in 2016.

**Nelson: TSV approved in 2014-2017**



**Nelson: FSV approved in 2014-2017**



**In brief**

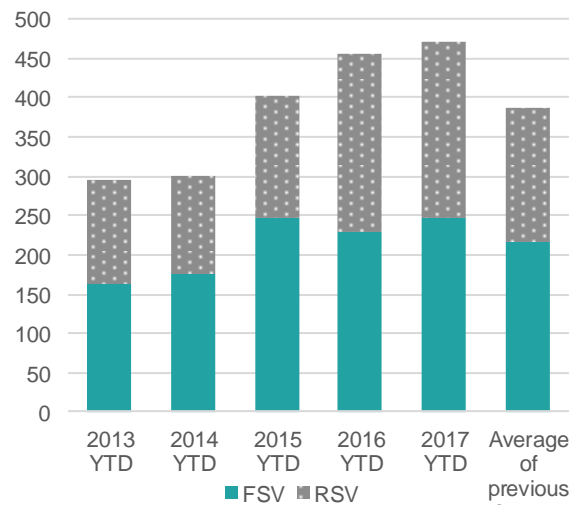
YTD	FSV	RSV	TSV
Visas	248	222	470
Change No.	20	- 6	14
Change Percent	9%	-3%	3%

Changes are from the YTD 2016 to the YTD 2017

**Nelson: TSV by sector (\*)**

	2014 YTD	2015 YTD	2016 YTD	2017 YTD	Change Number	Change Percentage
Schools	158	179	175	188	13	7%
ITP	90	185	252	238	-14	-6%
PTE	47	26	29	44	15	52%
Universities	4	12	-	-	0	
<b>Total</b>	<b>299</b>	<b>402</b>	<b>456</b>	<b>470</b>	<b>14</b>	<b>3%</b>

**Nelson: Cumulative FSV and RSV**



**Nelson: FSV by sector (\*)**

	2014 YTD	2015 YTD	2016 YTD	2017 YTD	Change Number	Change Percentage
Schools	94	95	97	101	4	4%
ITP	57	134	109	118	9	8%
PTE	23	18	22	29	7	32%
Universities	-	-	-	-	0	
<b>Total</b>	<b>174</b>	<b>247</b>	<b>228</b>	<b>248</b>	<b>20</b>	<b>9%</b>

(\*) Please note that numbers by sector may not always add up to the same as the total because sector is not always stated.

**Nelson: TSV by market**

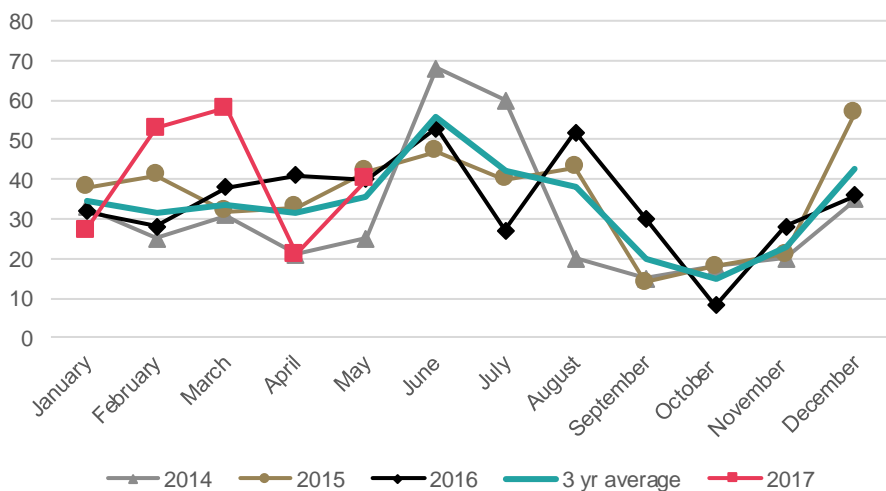
Country	2014 YTD	2015 YTD	2016 YTD	2017 YTD	Change Number	Change Percentage
India	34	98	130	69	-61	-47%
China	24	46	59	126	67	114%
Germany	39	47	47	54	7	15%
Thailand	31	37	38	39	1	3%
Japan	36	33	40	34	-6	-15%
Other	137	141	142	148	6	4%
<b>Total</b>	<b>301</b>	<b>402</b>	<b>456</b>	<b>470</b>	<b>14</b>	<b>3%</b>

**Nelson: 2016 total visas**

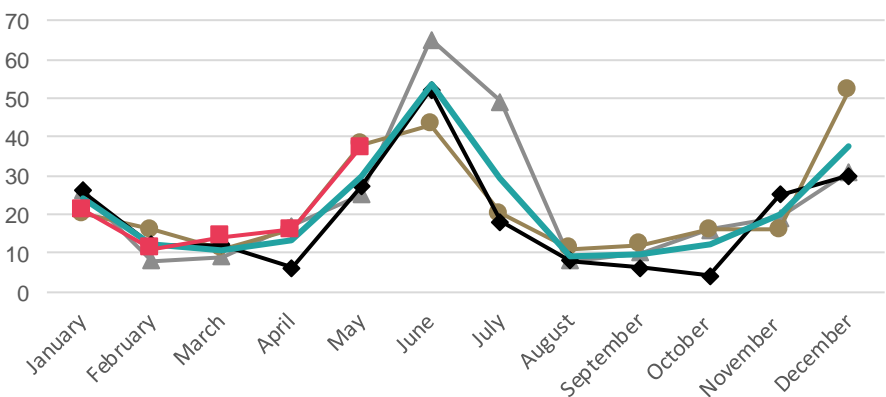
FSV	639
RSV	421
<b>TSV</b>	<b>1,060</b>

- There has been an 11% (+20) increase in TSV for Northland for the YTD 2017 compared to the YTD 2016. The main contributor was an increase in TSV for the schools sector (+25%, +19).
- The number of students in Northland with valid visas on 1 June 2017 was 344, declining by 10% (-42) compared to the same day in 2016.

**Northland: TSV approved in 2014-2017**



**Northland: FSV approved in 2014-2017**

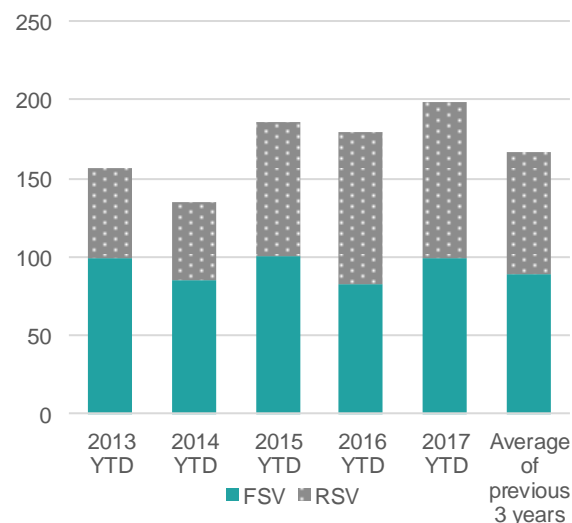


**In brief**

YTD	FSV	RSV	TSV
Visas	99	100	199
Change No.	16	4	20
Change Percent	19%	4%	11%

Changes are from the YTD 2016 to the YTD 2017

**Northland: Cumulative FSV and RSV**



**Northland: 2016 total visas**

FSV	226
RSV	187
TSV	413

**Northland: TSV by sector (\*)**

	2014 YTD	2015 YTD	2016 YTD	2017 YTD	Change Number	Change Percentage
Schools	97	75	77	96	19	25%
ITP	32	108	100	103	3	3%
PTE	5	3	2	-	-2	-100%
Universities	1	-	-	-	0	
Total	135	186	179	199	20	11%

**Northland: FSV by sector (\*)**

	2014 YTD	2015 YTD	2016 YTD	2017 YTD	Change Number	Change Percentage
Schools	67	51	54	67	13	24%
ITP	15	48	29	32	3	10%
PTE	2	2	-	-	0	
Universities	1	-	-	-	0	
Total	85	101	83	99	16	19%

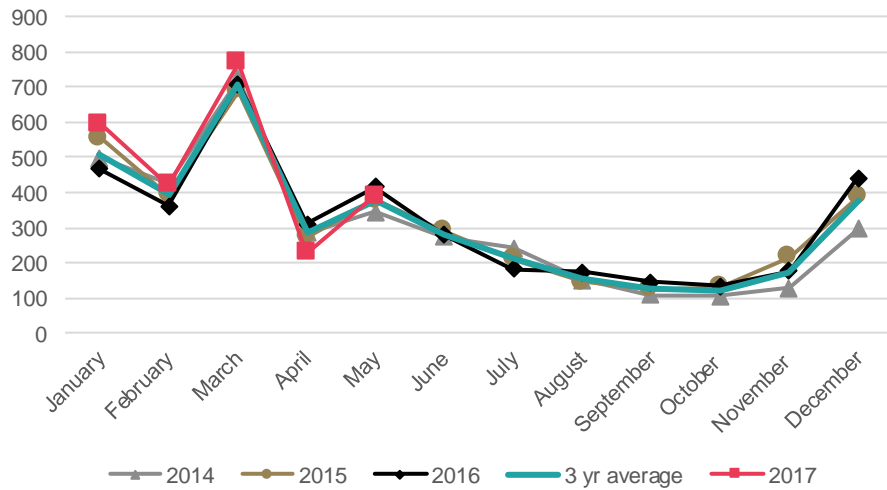
(\* Please note that numbers by sector may not always add up to the same as the total because sector is not always stated.

**Northland: TSV by market**

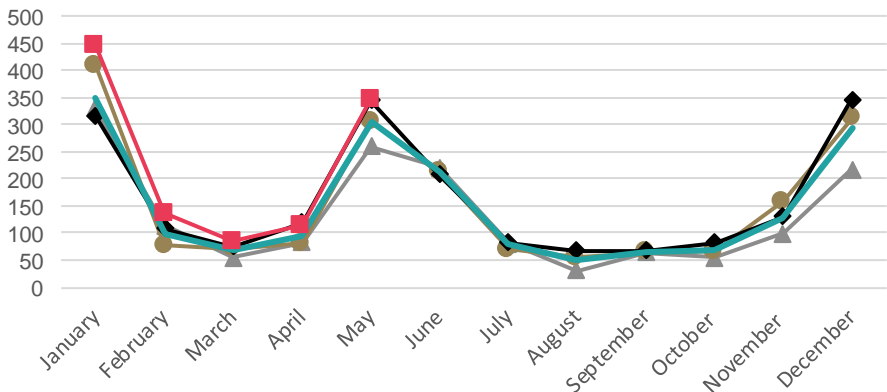
Country	2014 YTD	2015 YTD	2016 YTD	2017 YTD	Change Number	Change Percentage
China	22	77	67	74	7	10%
Germany	30	22	21	24	3	14%
Korea	18	20	23	29	6	26%
India	9	27	31	25	-6	-19%
Brazil	11	2	6	1	-5	-83%
Other	45	38	31	46	15	48%
Total	135	186	179	199	20	11%

- TSV have increased by 6% (+140) for the YTD 2017 compared to the YTD 2016. The TSV increase was in the universities sector (+8%, +135), with most of the increase coming from FSV for students from the USA (+23%, +90).
- Overall YTD 2017 figures have been consistent with past years. As such, June 2017 may see a decrease in both FSV and TSV numbers.
- Otago had 3,639 students with valid visas as on 1 June 2017, which was stable (+0%,+8) compared to the same day in 2016.

**Otago: TSV approved in 2014-2017**



**Otago: FSV approved in 2014-2017**

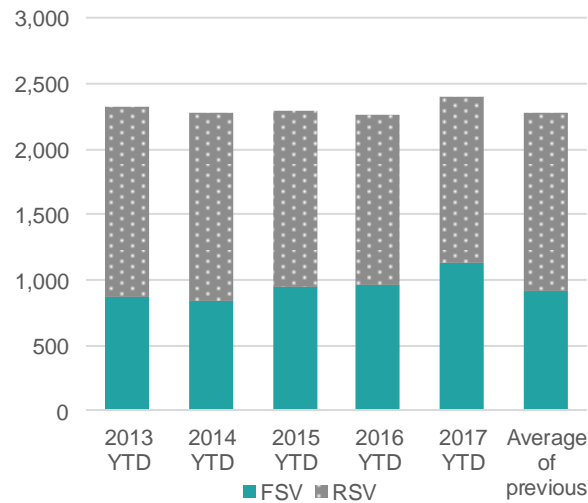


**In brief**

YTD	FSV	RSV	TSV
Visas	1,125	1,278	2,403
Change No.	162	- 22	140
Change Percent	17%	-2%	6%

Changes are from the YTD 2016 to the YTD 2017

**Otago: Cumulative FSV and RSV**



**Otago: 2016 total visas**

FSV	1,946
RSV	1,852
TSV	3,798

**Otago: TSV by sector (\*)**

	2014 YTD	2015 YTD	2016 YTD	2017 YTD	Change Number	Change Percentage
Schools	264	249	243	297	54	22%
ITP	207	202	295	246	-49	-17%
PTE	16	15	9	9	0	0%
Universities	1,777	1,822	1,716	1,851	135	8%
<b>Total</b>	<b>2,264</b>	<b>2,288</b>	<b>2,263</b>	<b>2,403</b>	<b>140</b>	<b>6%</b>

**Otago: FSV by sector (\*)**

	2014 YTD	2015 YTD	2016 YTD	2017 YTD	Change Number	Change Percentage
Schools	106	88	111	142	31	28%
ITP	58	77	104	109	5	5%
PTE	2	8	6	7	1	17%
Universities	663	767	742	867	125	17%
<b>Total</b>	<b>829</b>	<b>940</b>	<b>963</b>	<b>1,125</b>	<b>162</b>	<b>17%</b>

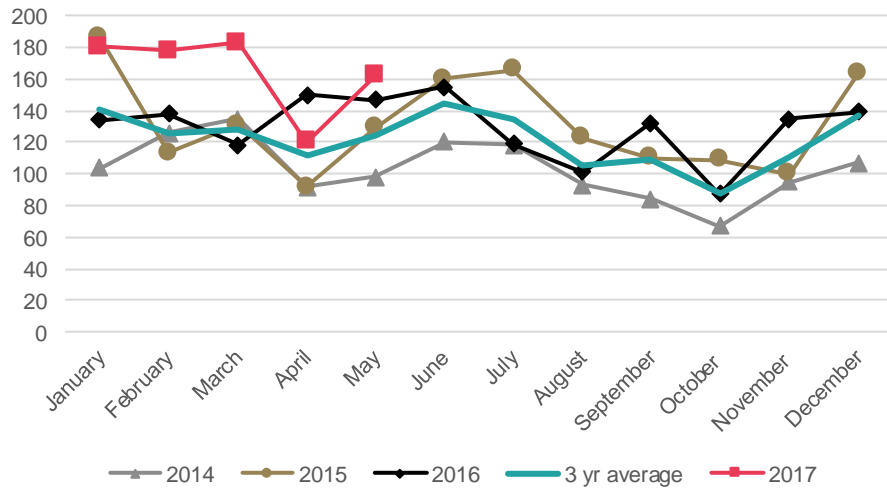
(\*) Please note that numbers by sector may not always add up to the same as the total because sector is not always stated.

**Otago: TSV by market**

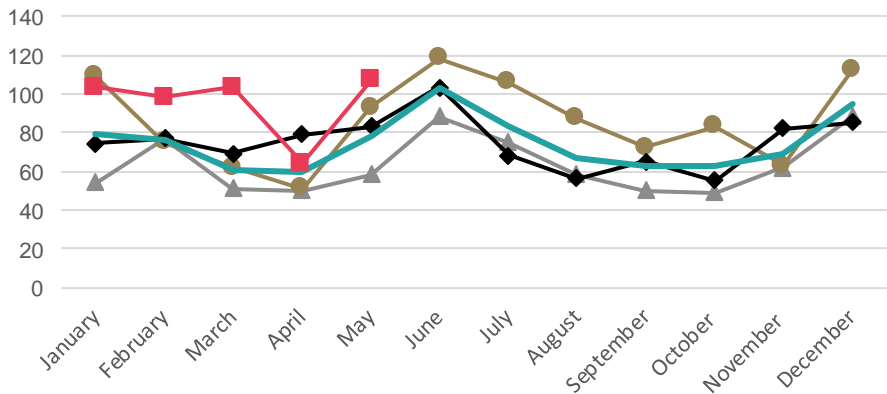
Country	2014 YTD	2015 YTD	2016 YTD	2017 YTD	Change Number	Change Percentage
China	561	526	600	565	-35	-6%
USA	362	458	403	492	89	22%
Malaysia	228	224	190	186	-4	-2%
Japan	121	112	92	97	5	5%
Hong Kong	95	95	82	73	-9	-11%
Other	906	873	896	990	94	10%
<b>Total</b>	<b>2,273</b>	<b>2,288</b>	<b>2,263</b>	<b>2,403</b>	<b>140</b>	<b>6%</b>

- TSV have increased by 20% (+136) for the YTD 2017 compared to the YTD 2016. This was driven by an increase in FSV (+24%, +93) for the PTE (+59%, +88) sector. These increases were driven by Brazilian and Colombian students.
- The ITP (55%) and PTE (31%) sectors account for 86% of the regional Southland market.
- Southland had 1,187 VSV on 1 June 2017, an increase of 44% (+362) since the same date last year.

Southland: TSV approved in 2014-2017



Southland: FSV approved in 2014-2017

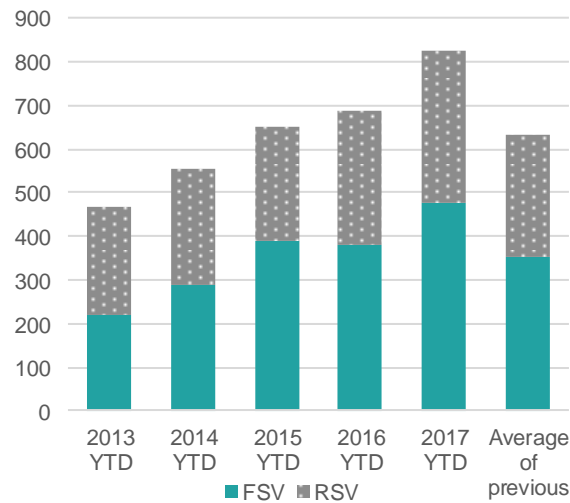


**In brief**

YTD	FSV	RSV	TSV
Visas	475	348	823
Change No.	93	43	136
Change Percent	24%	14%	20%

Changes are from the YTD 2016 to the YTD 2017

Southland: Cumulative FSV and RSV



Southland: 2016 total visas

FSV	896
RSV	659
TSV	1,555

Southland: TSV by sector (\*)

	2014 YTD	2015 YTD	2016 YTD	2017 YTD	Change Number	Change Percentage
Schools	124	138	107	115	8	7%
ITP	292	332	398	453	55	14%
PTE	123	174	176	255	79	45%
Universities	15	7	6	-	-6	-100%
Total	554	651	687	823	136	20%

Southland: FSV by sector (\*)

	2014 YTD	2015 YTD	2016 YTD	2017 YTD	Change Number	Change Percentage
Schools	73	76	54	55	1	2%
ITP	112	167	173	182	9	5%
PTE	92	141	150	238	88	59%
Universities	12	6	5	-	-5	-100%
Total	289	390	382	475	93	24%

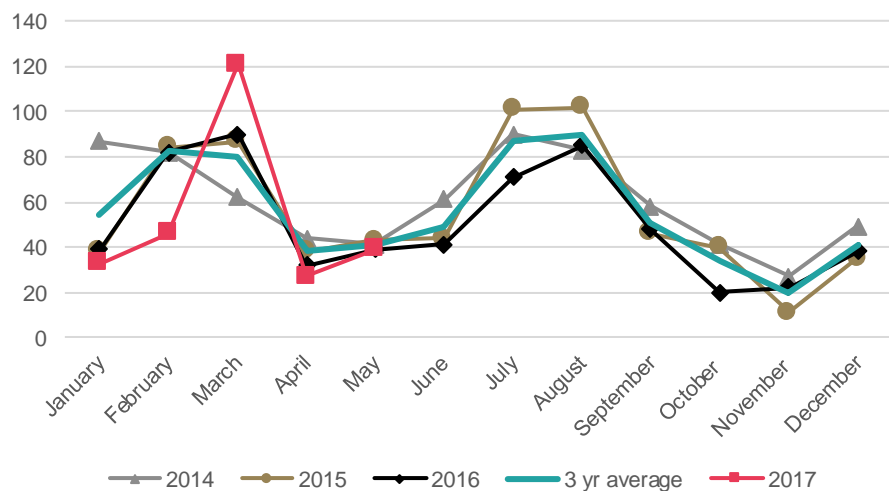
(\*) Please note that numbers by sector may not always add up to the same as the total because sector is not always stated.

Southland: TSV by market

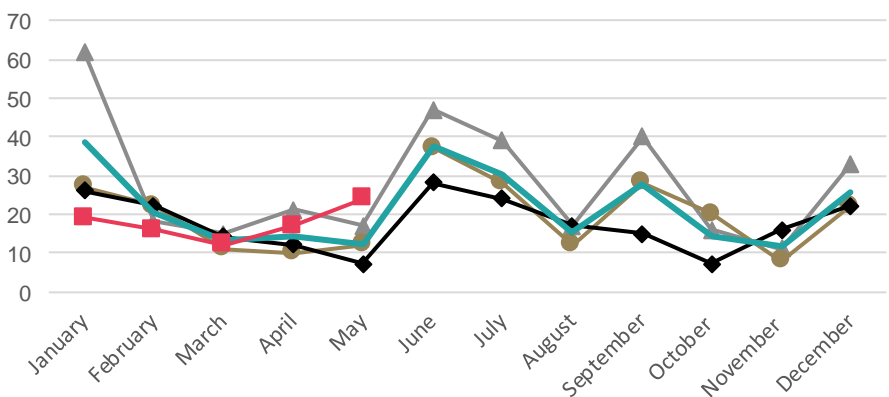
Country	2014 YTD	2015 YTD	2016 YTD	2017 YTD	Change Number	Change Percentage
China	169	138	158	188	30	19%
India	76	94	74	81	7	9%
Thailand	82	82	78	50	-28	-36%
Brazil	26	69	44	84	40	91%
Korea	30	43	69	66	-3	-4%
Other	172	225	264	354	90	34%
Total	555	651	687	823	136	20%

- TSV have decreased by 6% (- 16) for the 2017 YTD compared to the YTD 2016.
- Taranaki had 411 VSV on 1 May 2017, a decrease of 10% (- 44) compared to the same date last year.

**Taranaki: TSV approved in 2014-2017**



**Taranaki: FSV approved in 2014-2017**

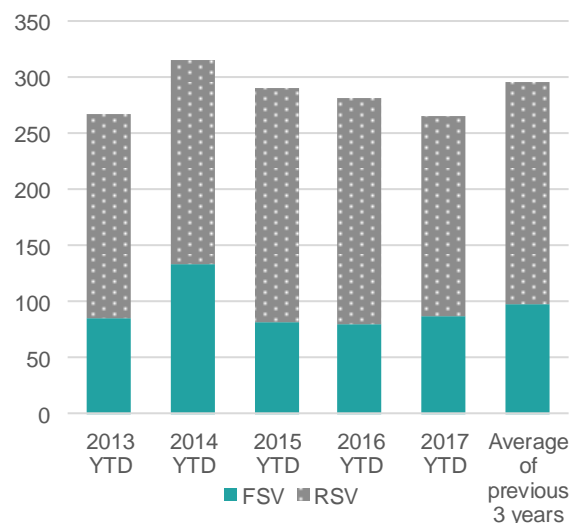


**In brief**

YTD	FSV	RSV	TSV
Visas	88	178	266
Change No.	7	- 23	- 16
Change Percent	9%	-11%	-6%

Changes are from the YTD 2016 to the YTD 2017

**Taranaki: Cumulative FSV and RSV**



**Taranaki: 2016 total visas**

FSV	210
RSV	397
TSV	607

**Taranaki: TSV by sector (\*)**

	2014 YTD	2015 YTD	2016 YTD	2017 YTD	Change Number	Change Percentage
Schools	59	42	54	53	-1	-2%
ITP	57	67	63	47	-16	-25%
PTE	200	181	165	166	1	1%
Universities	-	-	-	-	0	
Total	316	290	282	266	-16	-6%

**Taranaki: FSV by sector (\*)**

	2014 YTD	2015 YTD	2016 YTD	2017 YTD	Change Number	Change Percentage
Schools	29	16	28	29	1	4%
ITP	35	30	19	16	-3	-16%
PTE	69	36	34	43	9	26%
Universities	-	-	-	-	0	
Total	133	82	81	88	7	9%

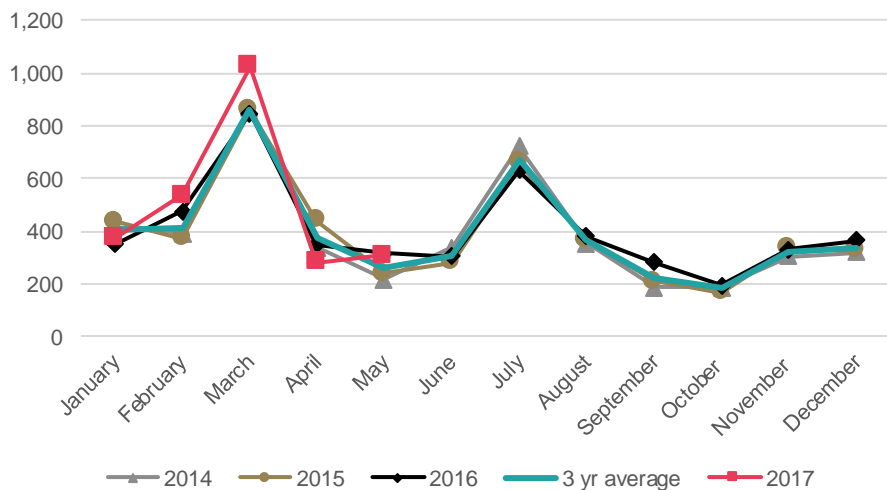
(\* Please note that numbers by sector may not always add up to the same as the total because sector is not always stated.

**Taranaki: TSV by market**

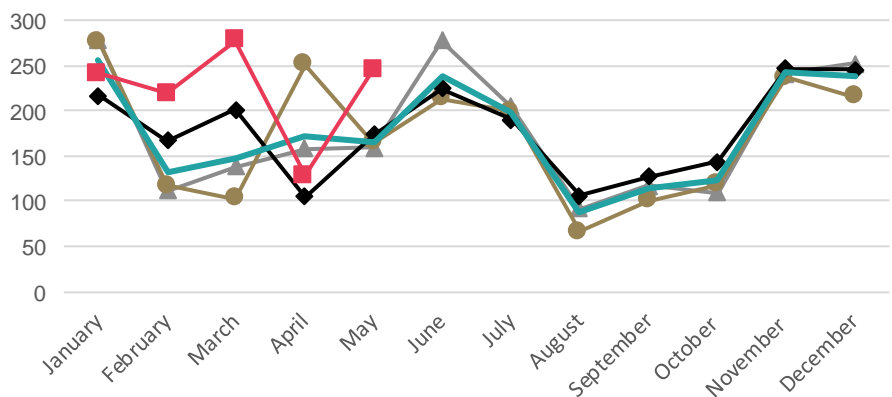
Country	2014 YTD	2015 YTD	2016 YTD	2017 YTD	Change Number	Change Percentage
India	114	113	107	84	-23	-21%
China	47	51	49	67	18	37%
Korea	48	39	26	15	-11	-42%
Viet Nam	17	19	19	21	2	11%
Russia	15	14	14	14	0	0%
Other	75	54	67	65	-2	-3%
Total	316	290	282	266	-16	-6%

- TSV increased by 8% (+185) for the YTD 2017, when compared to YTD 2016.
- FSV increased across all sectors, particularly universities (+45%, +146).
- VSV for this region was 4,019 on 1 June 2017, an increase of 11% (+400) since the same date in 2016.

**Waikato: TSV approved in 2014-2017**



**Waikato: FSV approved in 2014-2017**

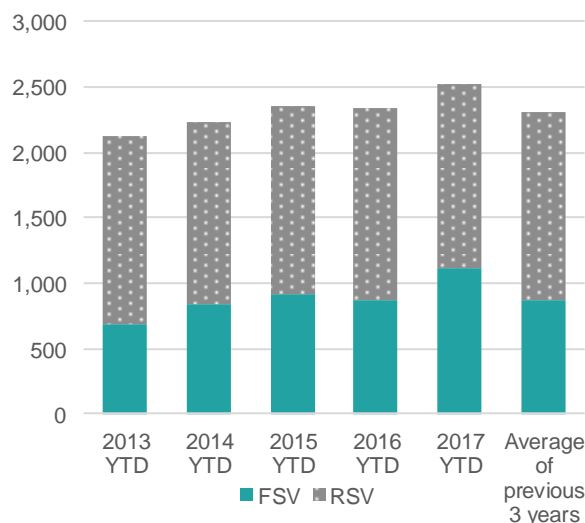


**In brief**

YTD	FSV	RSV	TSV
Visas	1,112	1,409	2,521
Change No.	248	- 63	185
Change Percent	29%	-4%	8%

Changes are from the YTD 2016 to the YTD 2017

**Waikato: Cumulative FSV and RSV**



**Waikato: 2016 total visas**

FSV	2,146
RSV	2,669
TSV	4,815

**Waikato: TSV by sector (\*)**

	2014 YTD	2015 YTD	2016 YTD	2017 YTD	Change Number	Change Percentage
Schools	350	321	355	412	57	16%
ITP	525	666	714	722	8	1%
PTE	179	241	196	212	16	8%
Universities	1,176	1,116	1,071	1,175	104	10%
Total	2,230	2,344	2,336	2,521	185	8%

**Waikato: FSV by sector (\*)**

	2014 YTD	2015 YTD	2016 YTD	2017 YTD	Change Number	Change Percentage
Schools	132	108	125	182	57	46%
ITP	166	219	272	291	19	7%
PTE	144	195	144	170	26	18%
Universities	399	384	323	469	146	45%
Total	841	906	864	1,112	248	29%

(\* Please note that numbers by sector may not always add up to the same as the total because sector is not always stated.

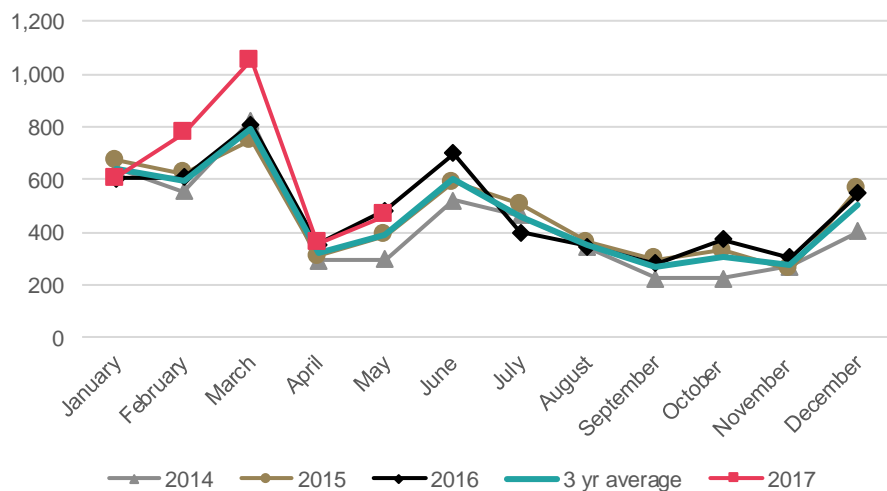
**Waikato: TSV by market**

Country	2014 YTD	2015 YTD	2016 YTD	2017 YTD	Change Number	Change Percentage
China	968	1,048	1,083	1,148	65	6%
India	185	253	286	356	70	24%
Saudi Arabia	158	147	75	74	-1	-1%
Korea	118	89	82	79	-3	-4%
UK	85	106	91	68	-23	-25%
Other	719	706	719	796	77	11%
Total	2,233	2,349	2,336	2,521	185	8%

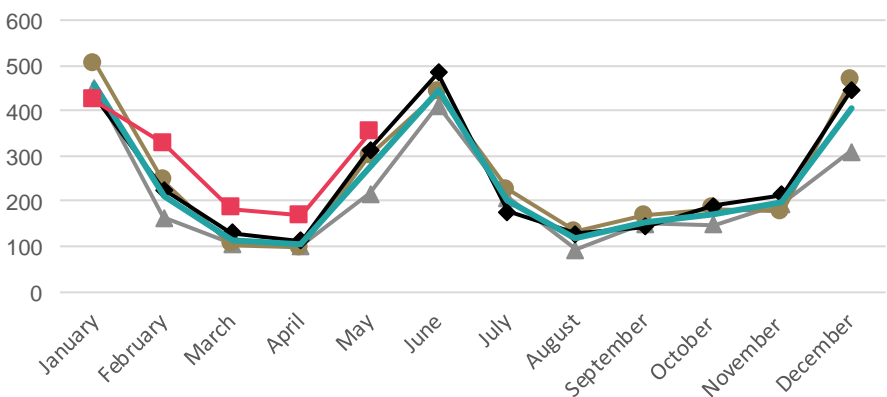


- There was a 14% (+389) increase in TSV in the YTD 2017, driven by an increase in FSV (+20%, +243).
- This was led by increased FSV in the universities sector (+15%, +101) particularly from Viet Nam (+170%, +63) and the USA (+17%, +32).
- June 2017 should see a peak increase in FSV and TSV numbers, particularly for the universities sector.
- VSV for this region were 5,260 for 1 June 2017, an increase of 14% (+ 629) from the same date in 2016.

**Wellington: TSV approved in 2014-2017**



**Wellington: FSV approved in 2014-2017**



**In brief**

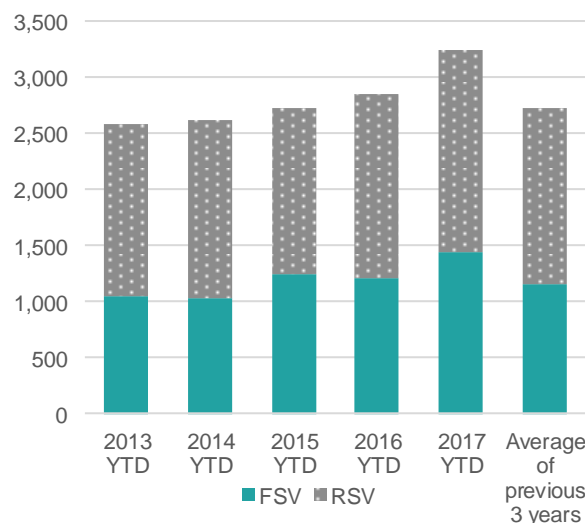
YTD	FSV	RSV	TSV
Visas	1,451	1,796	3,247
Change No.	243	146	389
Change Percent	20%	9%	14%

Changes are from the YTD 2016 to the YTD 2017

**Wellington: TSV by sector (\*)**

	2014 YTD	2015 YTD	2016 YTD	2017 YTD	Change Number	Change Percentage
Schools	455	401	407	533	126	31%
ITP	352	480	583	653	70	12%
PTE	256	256	240	316	76	32%
Universities	1,545	1,580	1,615	1,740	125	8%
Total	2,608	2,717	2,845	3,242	397	14%

**Wellington: Cumulative FSV and RSV**



**Wellington: FSV by sector (\*)**

	2014 YTD	2015 YTD	2016 YTD	2017 YTD	Change Number	Change Percentage
Schools	262	164	174	235	61	35%
ITP	134	228	236	266	30	13%
PTE	143	148	133	191	58	44%
Universities	493	695	654	755	101	15%
Total	1,032	1,235	1,197	1,447	250	21%

(\*) Please note that numbers by sector may not always add up to the same as the total because sector is not always stated.

**Wellington: TSV by market**

Country	2014 YTD	2015 YTD	2016 YTD	2017 YTD	Change Number	Change Percentage
China	753	926	1,068	1,169	101	9%
India	212	255	279	322	43	15%
USA	197	255	221	252	31	14%
Viet Nam	202	172	159	217	58	36%
Japan	108	116	123	119	-4	-3%
Other	1,139	1,008	1,008	1,168	160	16%
Total	2,611	2,732	2,858	3,247	389	14%

**Wellington: 2016 total visas**

FSV	2,989
RSV	2,818
TSV	5,807